

NIAAA/NIDA EARLY CAREER INVESTIGATOR POSTER SESSION AND SOCIAL HOUR

**NATIONAL INSTITUTE ON
ALCOHOL ABUSE AND
ALCOHOLISM
&
NATIONAL INSTITUTE ON
DRUG ABUSE**

IN COLLABORATION WITH

**SOCIETY OF ADDICTION
PSYCHOLOGY – APA DIVISION 50**

**DIVISION OF
PSYCHOPHARMACOLOGY AND
SUBSTANCE ABUSE – APA
DIVISION 28**

**AUGUST 5, 2022
4 P.M. - 6 P.M. EST**

Mental Health

Corey Monley

Drinking to cope with COVID-19 anxiety predicts greater alcohol problems for undergraduate students

- Graduate student
- Counseling Psychology Program
- University at Albany-SUNY
- Email: cmonley@albany.edu



Alexis Blessing Ph.D.

The Influence Of Cannabis Use Disorder and Co-Morbid Mental Health Problems On NSSI in College Students

- Research Assistant Professor
- Department of Psychology
- The University of Texas at San Antonio
- Email: alexis.blessing@utsa.edu



Ashley Peck

Easy as CBD: A Cannabidiol Primer for Mental Health Professionals

- Graduate student
- University of Alabama
- Email: atpeck@crimson.ua.edu



Mental Health (cont.)



Priyanka Sunder

Sedative Users with a Prescription Report More Anxiety than Sedative Users Without a Prescription

- Graduate Student
- Feilding Graduate University
- Email: psunder@email.fielding.edu

Positive Psychology

Catherine Trinh

A Preliminary Test of Positive Psychological Interventions to Change Cannabis Motives

- Graduate Student
- The University of Rhode Island
- Department of Psychology
- Email: trinh@uri.edu



Shahar Almog

Spending time in nature serves as a protective factor against harmful alcohol use

- Graduate Student
- Health Education and Behavior
- University of Florida
- Email: sbatalmogmaron@ufl.edu



mHealth

Molly Anderson Ph.D

Coping with Cannabis Craving: Development of a Digital Intervention

- PostDoctoral Fellow
- Giesel School of Medicine
- Dartmouth College; Department of Biomedical Data Sciences
- Email: molly.a.b.anderson@dartmouth.edu



Irene Pericot-Valverde Ph.D.

A remote intervention for treatment and smoking cessation among people living with HCV-A pilot study

- Research Assistant Professor
- School of Health Research
- Email: iperico@clermson.edu



Recovery

Taylor Sheldon

Themes of Agency and Communion in Narratives of Recovery from Substance Use Disorder

- Graduate Student
- University of Massachusetts Lowell
- Department of Psychology
- Email: taylor_sheldon@student.uml.edu



Recovery (cont.)

Candice Hayden

Perceived Social Support and Substance Use Recovery During COVID-19

- Graduate Student
- The University of Texas at Tyler
- Department of Psychology
- Email: cvillarreal3@patriots.uttyler.edu



Jessica Zurawel

Once an Addict, Always an Addict? The Trajectory of Public Stigma Across the Stages of Recovery from a Substance Use Disorder

- Graduate Student
- Rhode Island College
- Department of Psychology
- Email: jzurawel_9100@email.ric.edu



Jordan Jurinsky

Social networks are dynamic for youth in recovery: Qualitative findings

- Graduate Student
- Vanderbilt University
- Human and Organizational Development
- Email: jordan.jurinsky@vanderbilt.edu



Equity



Erik Ortiz

Enhancing Social Determinants of Health Among People with Opioid Use Disorder

- Graduate Student
- Clemson University
- Email: erik.ortiz@prismahealth.org

Alexander Calder

Exploring social factors contributing to natural recovery from substance addiction

- Graduate Student
- University of Miami
- Email: AJC364@miami.edu



Harm Reduction



Tanee Deans

Safe Injection Sites (SIS) as an economically progressive measure to address the opioid epidemic: A systematic literature review.

- Graduate Student
- PsyD/ Albizu University
- Email: td0227268@sunmail.albizu.edu

Minority Populations

Cara Struble Ph.D

Cannabis Vaping among LGBT+ and Cisgender Heterosexual Young Adults in Southern California

- PostDoctoral Fellow
- Department of Biomedical Data Science
- Geisel School of Medicine
- Email: cara.a.struble@dartmouth.edu



Alana Egan

The Influence of Primary Socialization on American Indian Adolescent Intentions to Use Substances

- Graduate Student
- University of Rhode Island
- Email: aeganleong@uri.edu



Tessa Nalven

Factors Associated with Multiracial Adults' Illicit Substance Use

- Graduate Student
- University of Rhode Island
- Email: tessa_nalven@uri.edu



Minority Populations (cont.)

Jacqueline Paiz

Substance Use and Mental Health Treatment Utilization Among Latinx Adolescents

- Graduate Student
- Indiana University
- Email: jypaiz@iu.edu



Substance Comparison



Shabria S. Smith

Resistance to Peer Pressure Across Alcohol, Steroid, and Sedative User Groups.

- Graduate Student
- Psychology/ Fielding Graduate University
- Email: samos@email.fielding.edu

Quinton Castleberry

Non-Medical Use of Prescription Sedatives: A Possible Gateway to Drug and Alcohol Abuse

- Graduate Student
- Fielding Graduate University
- Email: qrcastleberry13@gmail.com



Substance Comparison (cont.)



Grant Jones

Associations between classic psychedelics and opioid use disorder in a nationally-representative U.S sample

- Graduate Student
- Harvard University
- gmj005@g.harvard.edu

Patterns of Use

Grace Putz

Furthering the link between a desire to dissociate and negative reinforcement patterns of drinking

- Graduate Student-Addiction
- Student and Research Assistant
- Creighton University
- Email: graceputz@creighton.edu



Andrea Vásquez Ferreiro

Characterizing Childhood trauma, Substance Use, and Behavioral Economic Demand for Opioids in an Online Sample

- Graduate Student
- Department of Health Education and Behavior
- University of Florida
- Email: avasquezferreiro@ufl.edu



Genetics

Emran Altaf

Fifty-Year Predictive Validity of the Tri-Level Method of Defining Familial Alcoholism

- Graduate Student
- Doctor of Psychology
- California Northstate University
College of Psychology
- Email: emranaltaf@gmail.com



Lindzey Hoover

Co-Occurring Food Addiction, High-Risk Substance Use, and Parental History of High-Risk Alcohol Use

- Graduate Student
- Clinical Science/ Department of Psychology
- University of Michigan
- Email: lindzeyh@umich.edu



Social Influences

Julie Cristello

Examining adolescent exposure to alcohol and marijuana content across popular social media platforms.

- Graduate Student
- Florida International University
- Email: jcristel@fiu.edu



Social Influences (cont.)



Emily Warner

Changes in Perceptions of Individual and Peer Drinking in the COVID-19 Pandemic

- Graduate Student
- PhD Candidate
- Oklahoma State University
- Email: emily.birkel@okstate.edu

Madison Murray

Unintentionally Blunting the Ability to Connect: Sex Differences on Empathy in Substance Use Samples

- Graduate Student
- Nova Southeastern University
- Email: mm4611@mynsu.nova.edu



Sexual Health



Kirsten Smith Ph.D.

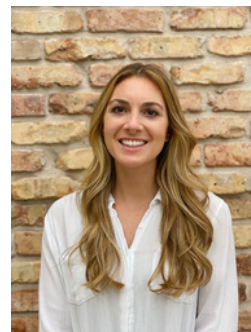
Involuntarily celibate adults: Wellbeing, perceived desirability to mates, and drug-use

- Postdoctoral fellow
- National Institute on Drug Abuse Intramural Research Program
- Translational Addiction Medicine Branch
- Email: kirsten.smith@nih.gov

Rena Pazienza Ph.D.

Sexual Assault and Bystander Intervention Among Men and Women College Student Drinking Gamers

- PostDoctoral Fellow
- Clover Educational Consulting Group
- University at Albany, SUNY
- Email: rpazienza@albany.edu



Thank you for supporting this important networking and science event. Be sure to spread the word and bring a friend—anyone can join this poster session, regardless of conference registration status. We look forward to seeing you there!