

Post-BA Education

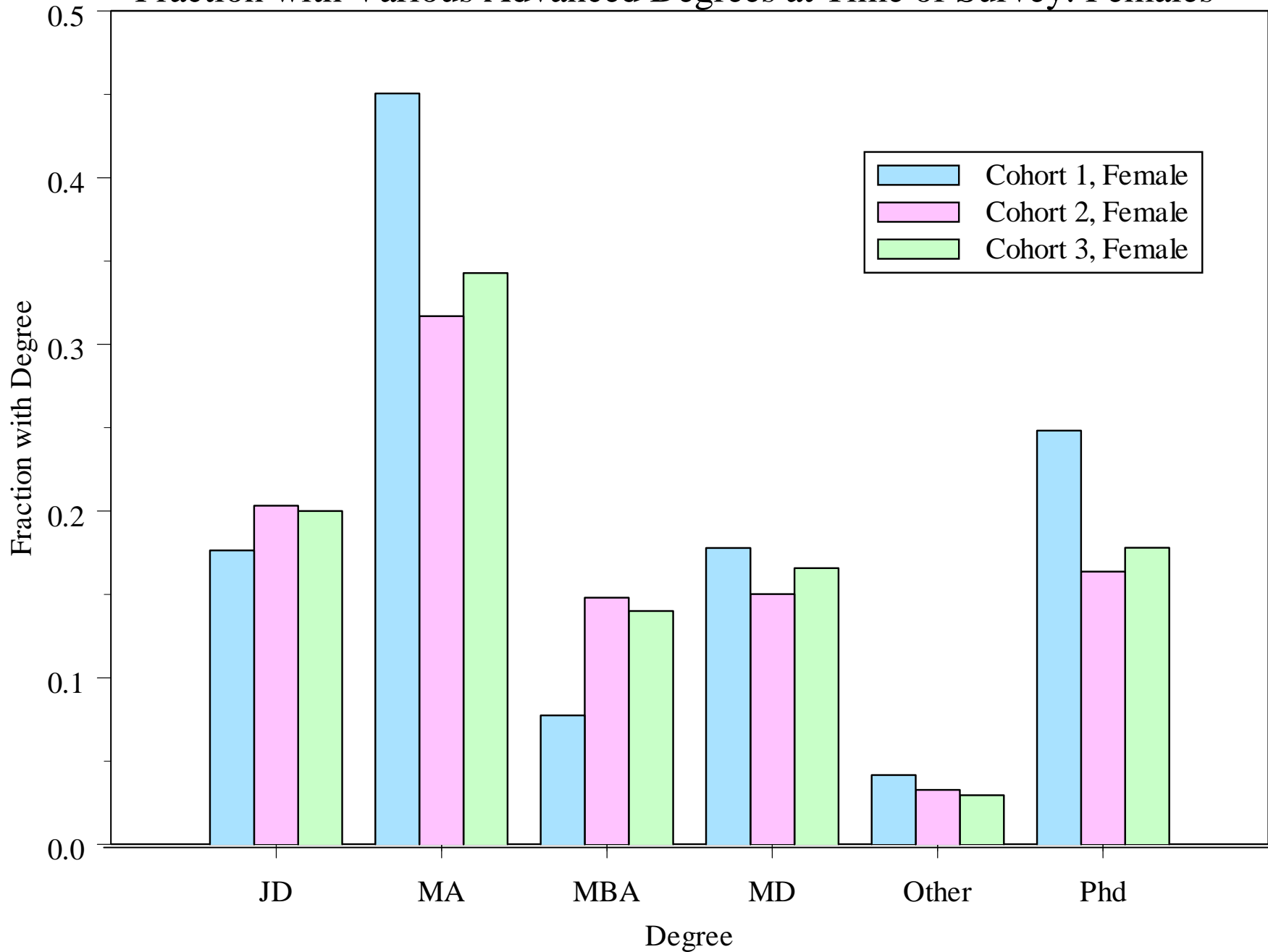
- Notes for Figures 1, 2, 3, 4, 5
- Advanced degrees include any and all degrees reported (e.g., Ph.D. and M.A. in same field), and totals can exceed 100%.
- MA is any masters but not MBA
- MD includes all medical degrees.
- Remember: Cohort 1 is graduating classes 1969-73; Cohort 2 is 1979-82; Cohort 3 is 1989-92.

Post-BA Education

- Interpretive notes for Figures 1, 2
- Shift to MBAs between Cohorts 1 and 2 for both males and females.
- Very high fraction of women with MD and JD even as early as Cohort 1 (see also later figure on “time to degree”)
- Decline in JD and MD for men is the mirror image of the increase in finance and management positions (see later Career figures).

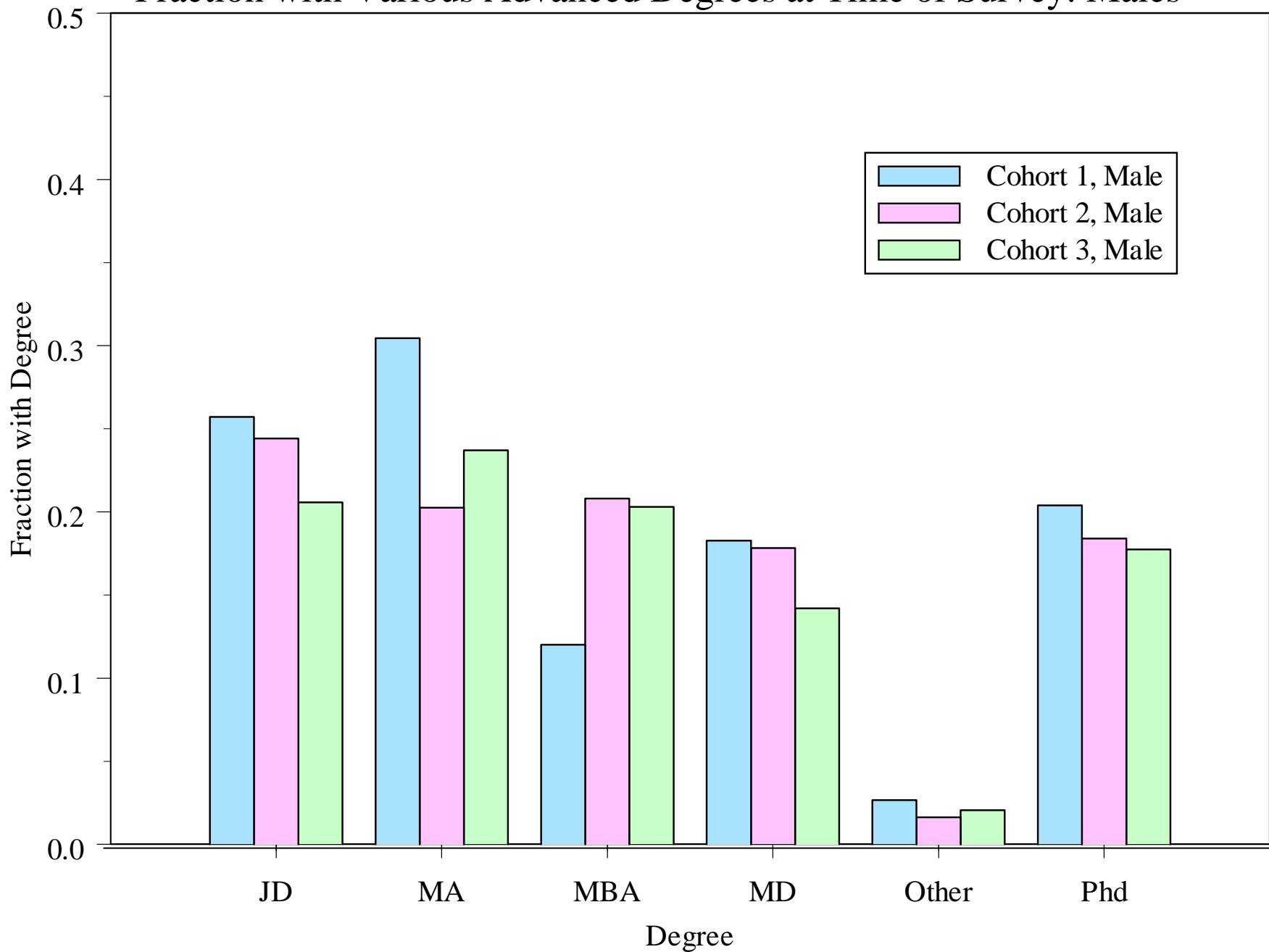
Fraction with Various Advanced Degrees at Time of Survey: Females

Fig. 1



Fraction with Various Advanced Degrees at Time of Survey: Males

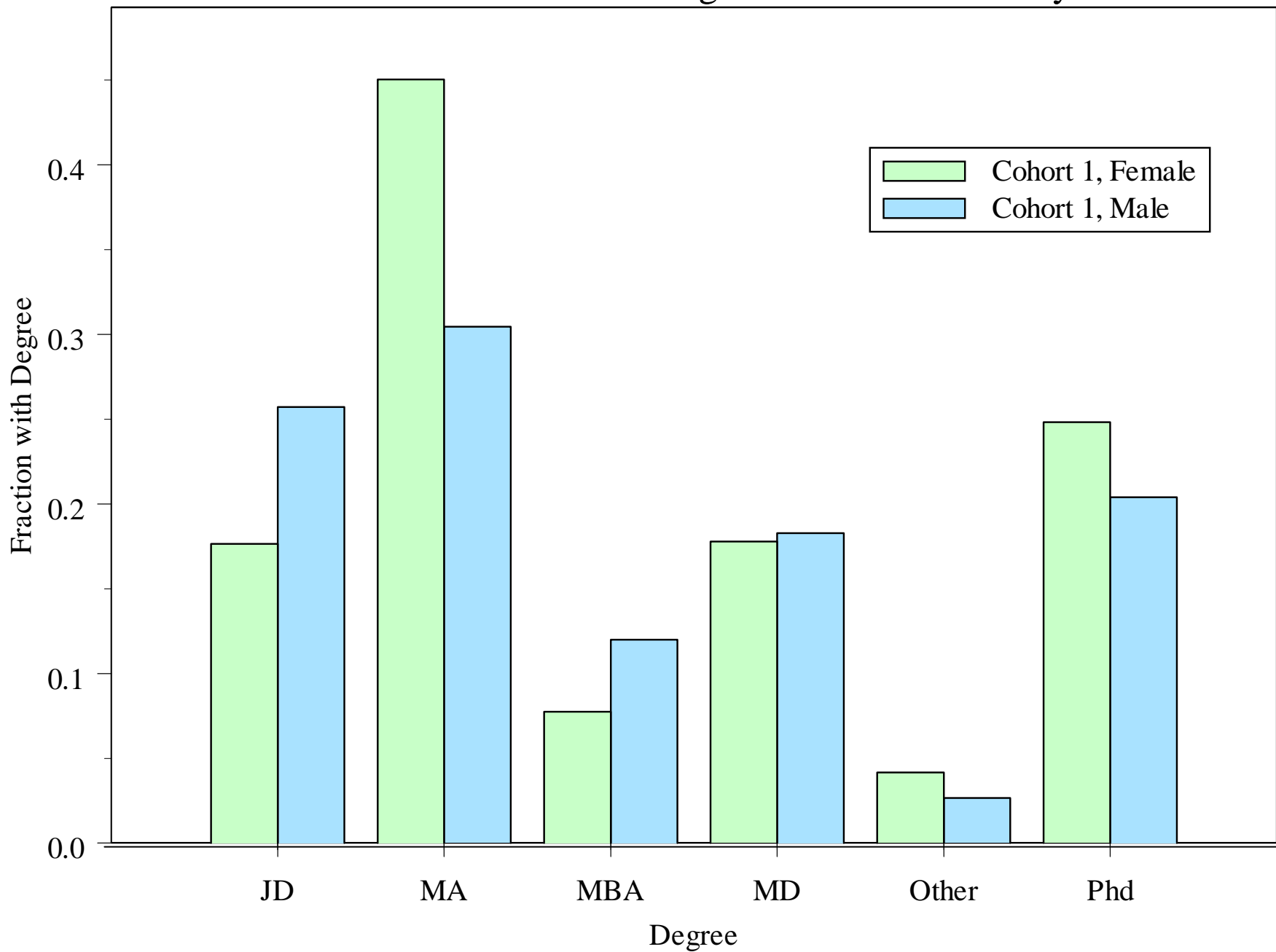
Fig. 2



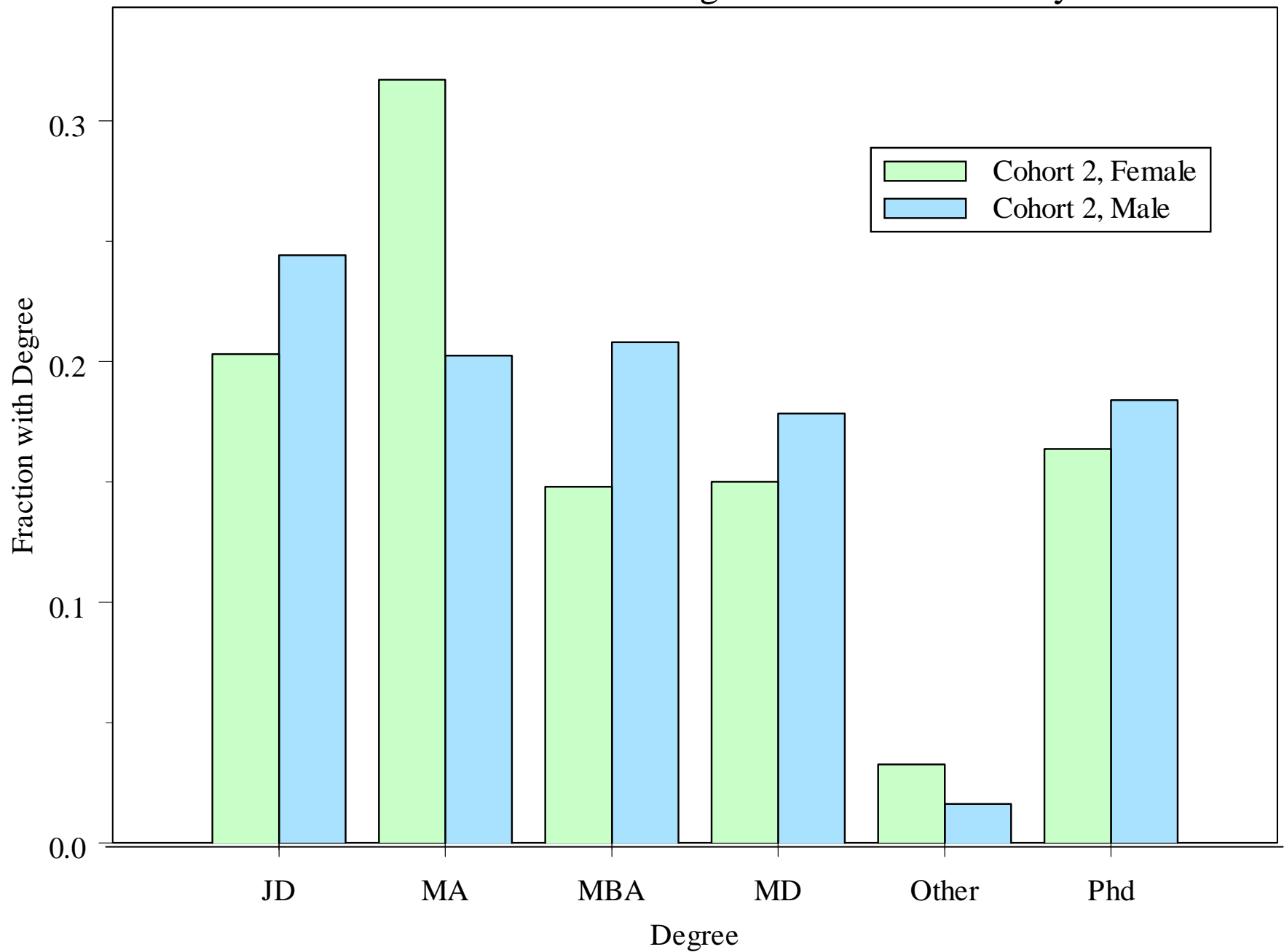
Post-BA Education

- Interpretive notes for Figures 3, 4, 5
- By Cohort 3 women and men have same fraction in JD
- MD parity exists in Cohort 1 and women then move ahead of men
- Women shift out of Ph.D.'s relative to men and into JD's.
- All switch into MBA's but men more than women.

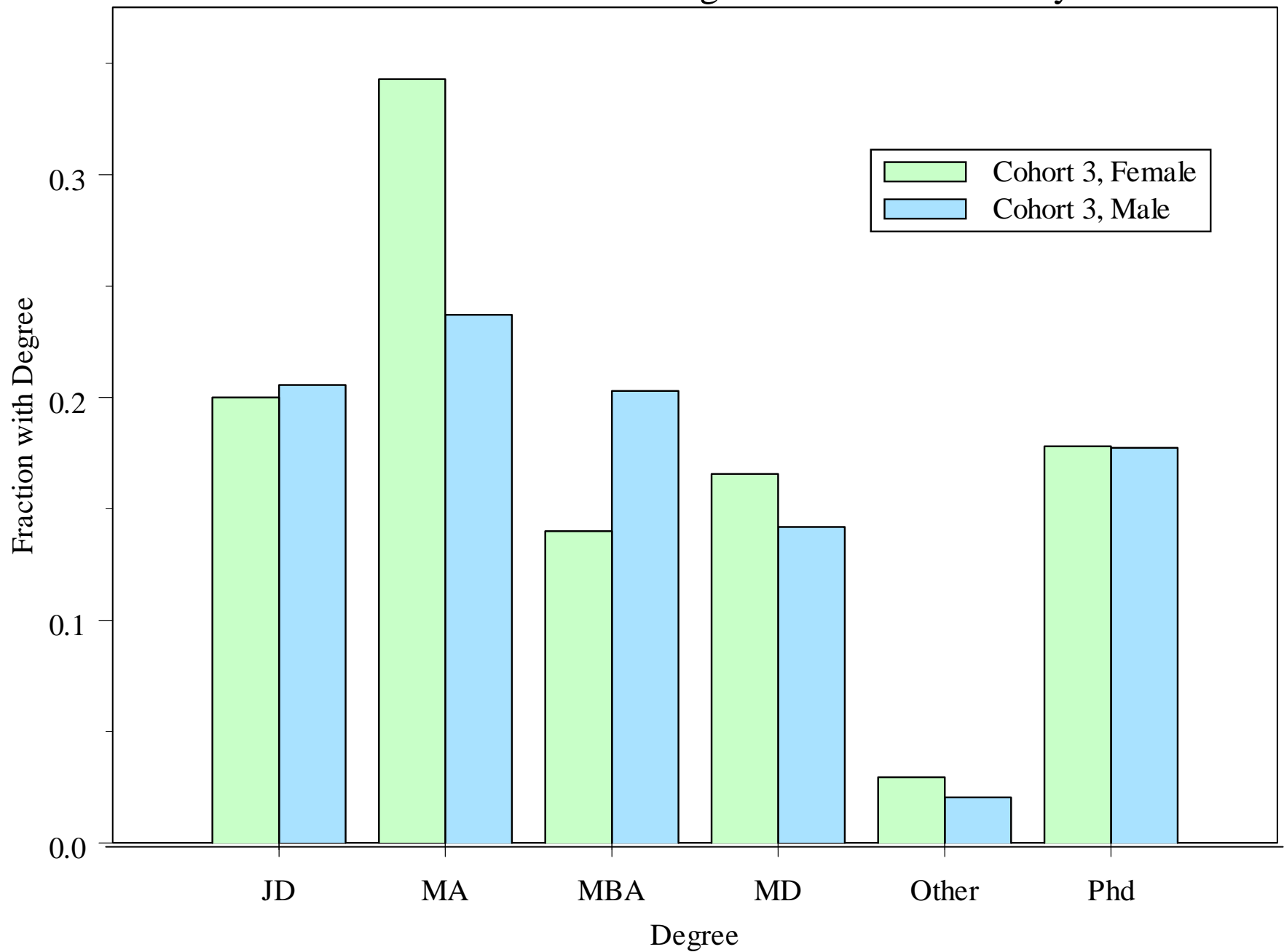
Fraction with Various Advanced Degrees at Time of Survey: Cohort 1 **Fig. 3**



Fraction with Various Advanced Degrees at Time of Survey: Cohort 2 **Fig. 4**



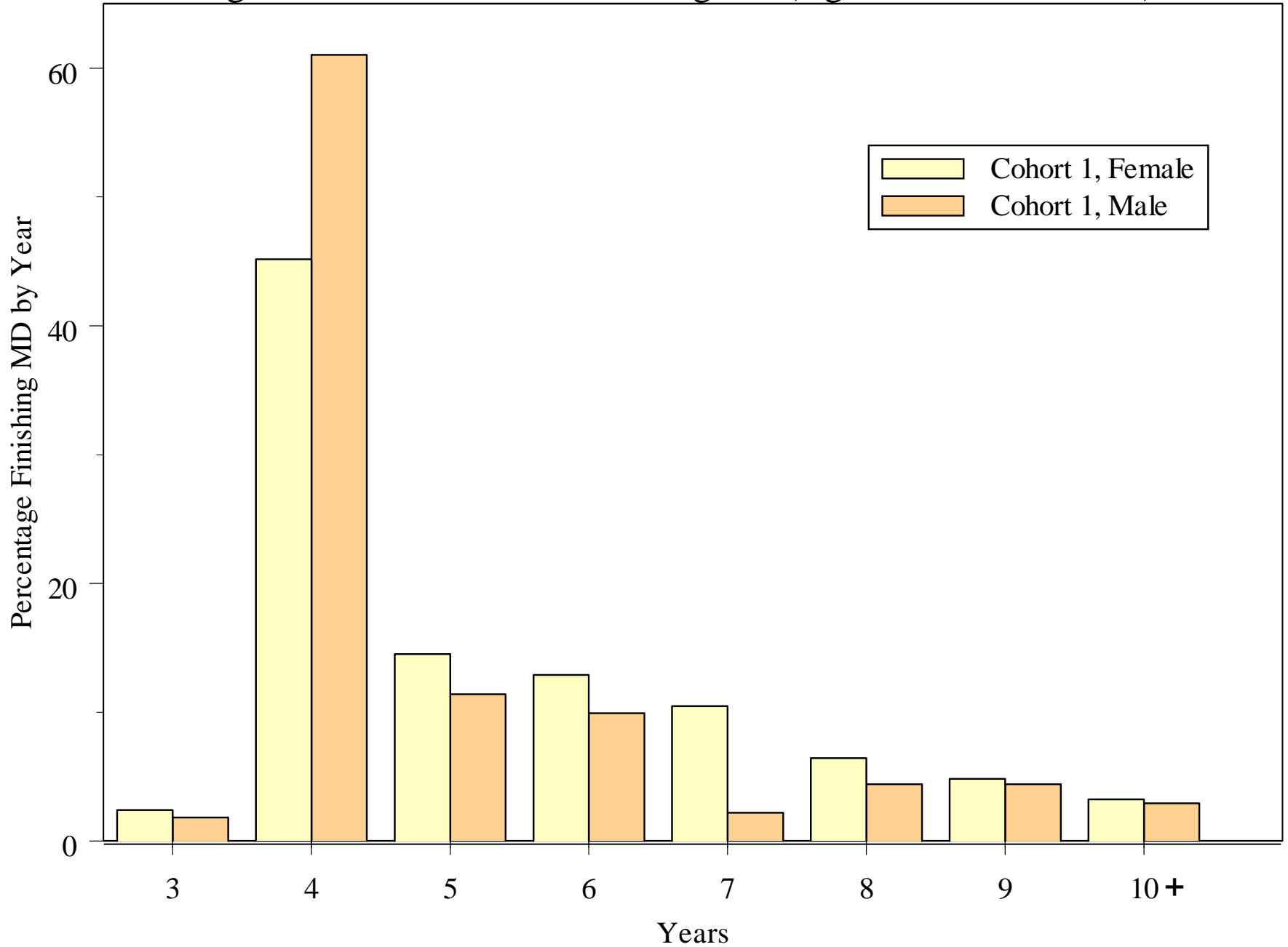
Fraction with Various Advanced Degrees at Time of Survey: Cohort 3 **Fig. 5**



Post-BA Education

- Interpretive notes for Figures 6, 7
- These figures give time to degree since receipt of BA for those obtaining a medical degree (e.g., MD, DVM, DDS, DMD).
- For Cohort 1, the majority go straight into medical school but by Cohort 3 just 1/3 do.
- For Cohort 3, there is delay for most; BAs are doing more before entering professional or graduate schools than they used to.

Time to Degree since BA for Medical Degrees (e.g., MD, DDS, DVM): Cohort 1



Time to Degree since BA for Medical Degrees (e.g., MD, DDS, DVM): Cohort 3

