

Trending

Symptoms at COVID-19 Onset Among Health Care Workers in Washington State

Research | April 17, 2020 |

Comments 1

Characteristics and Outcomes of Patients Infected With SARS-CoV-2 Admitted to ICUs in Italy

Research | April 6, 2020

This Issue

Views **267,469** | Citations **0** |
Altmetric **1884**

JAMA Infographic

FREE


March 17, 2020

Coronavirus Disease 2019 (COVID-19) in Italy

Edward Livingston, MD; Karen Bucher, MA, CMI

Article Information

JAMA. 2020;323(14):1335.
doi:10.1001/jama.2020.4344

 **Related Articles**

Download PDF

 Cite This

 Permissions

 **Coronavirus Resource Center**

SCHEDULED MAINTENANCE

Our websites may be periodically unavailable between 11:00PM CT April 18, 2020 and 4:00PM CT April 19, 2020 for regularly scheduled maintenance.

Trending

Research 

Characteristics and Outcomes of Patients Infected With SARS-CoV-2 Admitted to ICUs in Italy



More ▾

On February 20, 2020, a young man in the Lombardy region of Italy was admitted with an atypical pneumonia that later proved to be COVID-19. In the next 24 hours there were 36 more cases, none of whom had contact with the first patient or with anyone known to have COVID-19. This was the beginning of one of the largest and most serious clusters of COVID-19 in the world. Despite aggressive containment efforts, the disease continues to spread and the number of affected patients is rising. The case-fatality rate has been very high and is dominated by very old patients. This Infographic shows the most recent statistics emerging from Italy regarding the country's experience with COVID-19.

April 6, 2020

Research 

Symptoms at COVID-19 Onset Among Health Care Workers in Washington State

April 17, 2020

Research  

Novel Coronavirus Infection in Hospitalized Infants Under 1 Year of Age in China

April 7, 2020

Select Your Interests

Advertisement

JOB LISTINGS ON JAMA CAREER CENTER®

Deputy Editor for Medicine

Worldwide (Remote)

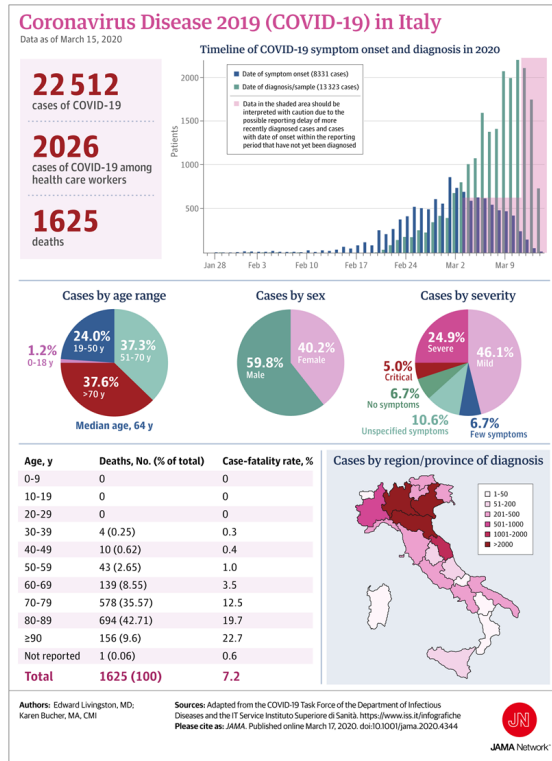
Intensivist

New York City, New York (US)

Physician

Hattiesburg, Mississippi

See more at JAMA Career Center



[Back to top](#)

Article Information

Sources: Adapted from the COVID-19 Task Force of the Department of Infectious Diseases and the IT Service Istituto Superiore di Sanità.

<https://www.iss.it/infografiche>

See More About

Coronavirus (COVID19)

Critical Care Medicine

Infectious Diseases

JAMA Infographic

Pulmonary Medicine

Trending

Social Distancing—What Would It Mean for It to Work?

JAMA Health Forum |
Opinion | April 15, 2020

Symptoms at COVID-19 Onset Among Health Care Workers in Washington State

JAMA | *Research* |
April 17, 2020

Characteristics and Outcomes of Patients Infected With SARS-CoV-2 Admitted to ICUs in Italy

JAMA | *Research* |
April 6, 2020
