



Factors Associated With Self-reported Symptoms of Depression Among Adults With and Without a Previous COVID-19 Diagnosis

Roy H. Perlis, MD, MSc; Mauricio Santillana, PhD; Katherine Ognyanova, PhD; Jon Green, PhD; James Druckman, PhD; David Lazer, PhD; Matthew A. Baum, PhD

Introduction

Rates of major depressive symptoms are elevated after acute infection with SARS-CoV-2.¹⁻³ A key question is whether such symptoms represent a general consequence of stress associated with acute illness or whether they reflect more specific sequelae associated with COVID-19 pathophysiology itself. To examine this possibility, in this survey study, we compared features of major depression in individuals with or without prior COVID-19 illness.

Author affiliations and article information are listed at the end of this article.

Methods

We conducted 12 waves of an internet nonprobability Qualtrics survey using a multipanel commercial vendor (PureSpectrum) approximately every month between May 2020 and February 2021 for individuals aged 18 years and older. The study was approved by the institutional review board of Harvard University. All participants provided written informed consent. We followed the American Association for Public Opinion Research (AAPOR) reporting guideline.

The survey included sociodemographic questions on sex, income, age, education, urbanicity, and self-identified race/ethnicity using 5 US Census categories. Race and ethnicity were included because a goal of the study is to understand how these and other sociodemographic features affect responses to COVID-19 illness and quarantine. Respondents indicated whether and when they had received a clinician diagnosis of COVID-19 illness or a positive SARS-CoV-2 test result. Participants also completed the Patient Health Questionnaire (PHQ)-9 as a measure of depressive symptoms,⁴ with a score of 10 or higher defined as at least moderate symptoms.

We applied multiple logistic regression with moderate or greater depressive symptoms as the dependent variable and sociodemographic features as independent variables, testing an interaction term with prior COVID-19 for each feature, using *glm* in R statistical software version 3.6 (R Project for Statistical Computing). We compared mean values for each depressive and anxious symptom between individuals with or without prior COVID-19 using 2-sided *t* tests. Significance was set at $P < .05$. Finally, we examined prevalence of depressive symptoms by months elapsed since COVID-19.

Results

Among 91 791 individuals who completed the PHQ-9, 61 472 (67.0%) were female, 9667 (10.5%) were Black, 6686 (7.3%) were Hispanic, 5306 (5.8%) were Asian, 36 818 (40.1%) completed some college, 22 216 (24.2%) were in urban locations, and 16 158 (17.6%) were rural. Their mean (SD) age was 42.34 (16.36) years, their median (interquartile range) annual income was \$49 000 (\$22 500-\$85 000), 5945 (6.5%) reported prior COVID-19 clinician diagnosis or test result, and 28 617 (31.2%) reported moderate or greater depressive symptoms.

In regression models for depressive symptoms, significant associations with prior COVID-19 status were identified for sex ($z = -9.58$; $P < .001$), income ($z = 9.75$; $P < .001$) Black vs White race ($z = 3.02$; $P = .003$), and urban vs rural locale ($z = 2.89$; $P = .004$) (Figure 1). Comparing individual

Open Access. This is an open access article distributed under the terms of the CC-BY License.

symptoms among those with or without prior COVID-19, the greatest differences in PHQ-9 scores were observed for suicidality (mean [SD], 2.50 [1.06] vs 1.99 [1.09]; $t = -24.83$; $P < .001$) and motor symptoms (mean [SD], 2.58 [1.01] vs 2.11 [1.06]; $t = -23.74$; $P < .001$) (Figure 2). The risk for depressive symptoms increased with greater duration after acute illness (for each additional month, crude OR, 1.07; 95% CI, 1.05-1.09; adjusted for survey month, state, and sociodemographic features, adjusted OR, 1.09, 95% CI, 1.07-1.11).

Figure 1. Logistic Regression Model for Association of Sociodemographic Features With Moderate or Greater Depressive Symptoms, Among Adults With or Without Prior COVID-19 Illness

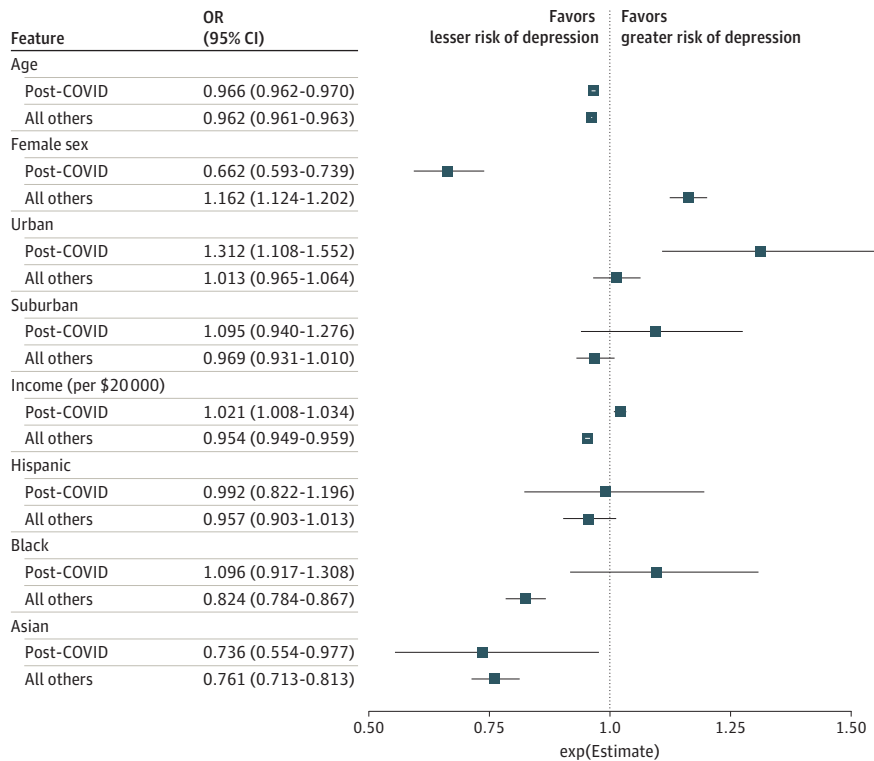
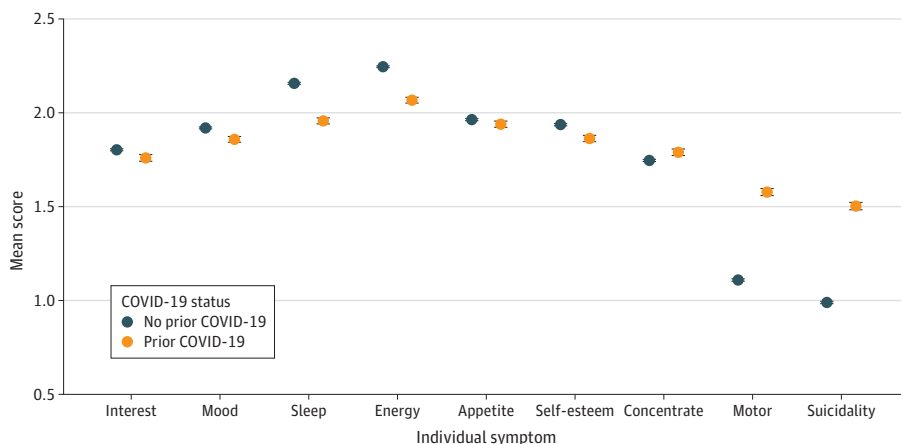


Figure 2. Individual Patient Health Questionnaire-9 and Patient Health Questionnaire-4 Symptoms Among Adults With Current Moderate or Greater Depressive Symptoms, With and Without Prior COVID-19 Infection



Discussion

In this survey study, the magnitude of depressive symptoms and sociodemographic variables differed between individuals with and without prior COVID-19 illness. These differences in phenomenology and risk factors both indirectly suggest that apparent major depressive episodes following COVID-19 illness may be distinct from those typically observed in adults. Furthermore, the risk for depressive symptoms increased with greater postacute interval, rather than the gradual reduction anticipated if depressive symptoms are a consequence of acute increase in illness-associated stressors. In interpreting our results, we note the key limitations that the PHQ-9 samples only a subset of symptoms and that details of psychiatric history and COVID-19 course are not available, necessitating confirmation in longitudinal cohorts.

The difference in symptom profile is notable in light of the markedly elevated rates of delirium observed in patients with COVID-19,^{5,6} given that delirium is also often associated with both motoric and cognitive symptoms. On the other hand, the lesser differences in concentration and fatigue suggest that post-COVID-19 depressive symptoms are not entirely explainable by other postacute systemic symptoms.

Broadly, our results may suggest a different disease process at least in a subset of individuals. At minimum, these distinctions suggest a need to better understand differences and similarities between depressive symptoms following COVID-19 and those associated with typical major depressive disorder.

ARTICLE INFORMATION

Accepted for Publication: May 7, 2021.

Published: June 11, 2021. doi:10.1001/jamanetworkopen.2021.16612

Open Access: This is an open access article distributed under the terms of the [CC-BY License](#). © 2021 Perlis RH et al. *JAMA Network Open*.

Corresponding Author: Roy H. Perlis, MD, MSc, Department of Psychiatry, Massachusetts General Hospital, 185 Cambridge St, 6th Fl, Boston, MA 02114 (rperlis@mg.harvard.edu).

Author Affiliations: Department of Psychiatry, Massachusetts General Hospital, Boston (Perlis); Department of Psychiatry, Harvard Medical School, Boston, Massachusetts (Perlis); Computational Health Informatics Program, Boston Children's Hospital, Boston, Massachusetts (Santillana); Department of Pediatrics, Harvard Medical School, Boston, Massachusetts (Santillana); Department of Epidemiology, Harvard T.H. Chan School of Public Health, Boston, Massachusetts (Santillana); Department of Communications, Rutgers University, New Brunswick, New Jersey (Ognyanova); Network Science Institute, Northeastern University, Boston, Massachusetts (Green, Lazer); Department of Political Science and Institute for Policy Research, Northwestern University, Evanston, Illinois (Druckman); Kennedy School of Government, Harvard University, Cambridge, Massachusetts (Baum).

Author Contributions: Dr Perlis had full access to all of the data in the study and takes responsibility for the integrity of the data and the accuracy of the data analysis.

Concept and design: Perlis, Green, Lazer.

Acquisition, analysis, or interpretation of data: Perlis, Santillana, Ognyanova, Druckman, Lazer, Baum.

Drafting of the manuscript: Perlis.

Critical revision of the manuscript for important intellectual content: All authors.

Statistical analysis: Perlis, Santillana, Ognyanova.

Obtained funding: Ognyanova, Lazer, Baum.

Administrative, technical, or material support: Ognyanova, Druckman, Lazer.

Supervision: Lazer.

Conflict of Interest Disclosures: Dr Perlis reported receiving consulting fees from Burrage Capital, Genomind, RID Ventures, and Takeda; receiving personal fees from Belle Artificial Intelligence; and holding equity in Outermost Therapeutics and Psy Therapeutics. No other disclosures were reported.

Funding/Support: This study was supported by the National Institute of Mental Health (grant R01MH116270 to Dr Perlis), the Blyth Family Fund, and the National Science Foundation (support to Drs Ognyanova, Lazer, and Baum).

Role of the Funder/Sponsor: The funders had no role in the design and conduct of the study; collection, management, analysis, and interpretation of the data; preparation, review, or approval of the manuscript; and decision to submit the manuscript for publication.

Disclaimer: Dr Perlis is an associate editor for *JAMA Network Open* but was not involved in the editorial review or decision process for this manuscript.

REFERENCES

1. Perlis RH, Ognyanova K, Santillana M, et al. Association of acute symptoms of COVID-19 and symptoms of depression in adults. *JAMA Netw Open*. 2021;4(3):e213223. doi:10.1001/jamanetworkopen.2021.3223
2. Taquet M, Luciano S, Geddes JR, Harrison PJ. Bidirectional associations between COVID-19 and psychiatric disorder: retrospective cohort studies of 62 354 COVID-19 cases in the USA. *Lancet Psychiatry*. 2021;8(2):130-140. doi:10.1016/S2215-0366(20)30462-4
3. Al-Aly Z, Xie Y, Bowe B. High-dimensional characterization of post-acute sequelae of COVID-19. *Nature*. Published online April 22, 2021. doi:10.1038/s41586-021-03553-9
4. Kroenke K, Spitzer RL. The PHQ-9: a new depression diagnostic and severity measure. *Psychiatr Ann*. 2002;32(9):509-515. doi:10.3928/0048-5713-20020901-06
5. Kennedy M, Helfand BK, Gou RY, et al. Delirium in older patients with COVID-19 presenting to the emergency department. *JAMA Netw Open*. 2020;3(11):e2029540. doi:10.1001/jamanetworkopen.2020.29540
6. Castro VM, Sacks CA, Perlis RH, McCoy TH. Development and external validation of a delirium prediction model for hospitalized patients with coronavirus disease 2019. *J Acad Consult Liaison Psychiatry*. Published online March 5, 2021. doi:10.1016/j.jaclp.2020.12.005