

Overreaction in Macroeconomic Expectations

Pedro Bordalo, Nicola Gennaioli, Yueran Ma, and Andrei Shleifer¹

December 2017, Revised March 2020

Abstract

We study the rationality of individual and consensus forecasts of macroeconomic and financial variables using the methodology of Coibion and Gorodnichenko (2015), who examine predictability of forecast errors from forecast revisions. We find that individual forecasters typically overreact to news, while consensus forecasts underreact relative to full information rational expectations. We reconcile these findings within a diagnostic expectations version of a dispersed information learning model. Structural estimation indicates that departures from Bayesian updating in the form of diagnostic overreaction capture important variation in forecast biases across different series, yielding a belief distortion parameter similar to estimates obtained in other settings.

¹ Oxford Said Business School, Università Bocconi, Chicago Booth, and Harvard University. We thank Emi Nakamura (the editor) and five referees for very helpful comments. We thank Olivier Coibion, Xavier Gabaix, Yuriy Gorodnichenko, Luigi Guiso, Lars Hansen, David Laibson, Jesse Shapiro, Paolo Surico, participants at the 2018 AEA meeting, NBER Behavioral Finance, Behavioral Macro, and EF&G Meetings, and seminar participants at Bonn, EIEF, Ecole Polytechnique, Harvard, MIT, and LBS for helpful comments. We owe special thanks to Marios Angeletos for several discussions and insightful comments on the paper. We acknowledge the financial support of the Behavioral Finance and Finance Stability Initiative at Harvard Business School and the Pershing Square Venture Fund for Research on the Foundations of Human Behavior. Gennaioli thanks the European Research Council for Financial Support under the ERC Consolidator Grant (GA 647782). We thank Johan Cassell, Bianca He, Francesca Miserocchi, Johnny Tang, and especially Spencer Kwon and Weijie Zhang for outstanding research assistance.

I. Introduction

According to the Rational Expectations hypothesis, individuals form beliefs about the future, and make decisions, using statistically optimal forecasts based on their information. A growing body of work tests this hypothesis using survey data on the expectations of households, firm managers, financial analysts, and professional forecasters. The evidence points to systematic predictability of forecast errors. Such predictability has been documented for inflation and other macro forecasts (Coibion and Gorodnichenko 2012, 2015, henceforth CG, Fuhrer 2019), the aggregate stock market (Bacchetta, Mertens, and Wincoop 2009, Amromin and Sharpe 2013, Greenwood and Shleifer 2014, Adam, Marcet, and Buetel 2017), the cross section of stock returns (La Porta 1996, Bordalo, Gennaioli, La Porta, and Shleifer 2019, henceforth BGLS), credit spreads (Greenwood and Hanson 2013, Bordalo, Gennaioli, and Shleifer 2018, henceforth BGS), short-term interest rates (Cieslak 2018), and corporate earnings (DeBondt and Thaler 1990, Ben-David, Graham, and Harvey 2013, Gennaioli, Ma, and Shleifer 2016, Bouchaud, Kruger, Landier, and Thesmar 2019). Predictable forecast errors also obtain in controlled experiments (Hommes, Sonnemans, Tuinstra, Van de Velden 2004, Beshears, Choi, Fuster, Laibson, Madrian 2013, Frydman and Nave 2016, Landier, Ma, and Thesmar 2019).

What does predictability of forecast errors teach us about how market participants form expectations? A valuable strategy introduced by CG (2015) is to compute the correlation between the current forecast revision and the future forecast error, defined as the realization minus the current forecast. Under Full Information Rational Expectations (FIRE) the forecast error is unpredictable and this correlation should be zero. When this correlation is positive, upward revisions predict higher realizations relative to the forecasts, meaning that the forecast underreacts to information relative to FIRE. When this correlation is negative, upward forecast revisions predict lower realizations relative to the forecasts, meaning that the forecast overreacts relative to FIRE.

This test of departures from FIRE can be applied to consensus forecasts. CG (2015) consider consensus forecasts of inflation and other macro variables and find evidence of underreaction relative to FIRE. They interpret this finding as a departure from full information, stemming from information frictions such as rational inattention (Sims 2003, Woodford 2003, Carroll 2003, Mankiw and Reis 2002, Gabaix

2014), while maintaining individual rationality in the form of Bayesian updating. Other empirical findings using consensus forecasts, however, cannot be explained using this account. For instance, upward consensus forecast revisions of firms' long-term earnings growth predict future disappointment and lower stock returns (BGLS 2019). This evidence points to overreaction of consensus forecasts, in line with the well-known excess volatility of asset prices in finance (Shiller 1981, De Bondt and Thaler 1985, Giglio and Kelly 2017, Augenblick and Lazarus 2018).

CG's (2015) test of departures from FIRE can also be applied to individual forecasts. D'Arienzo (2019) finds that individual analysts' forecasts of long-term interest rates overreact. BGLS (2019) also find overreaction for individual analyst expectations of long-term corporate earnings growth. On the other hand, Bouchaud et al. (2019) document underreaction of individual analyst forecasts of firms' short term (one year ahead) earning's growth.

This evidence is somewhat unsettling. To some it may suggest that there is no way of thinking systematically about the predictability of forecast errors, confirming the dictum that when one abandons rationality "anything goes". This paper shows that this is not the case. First, we show that different tests are informative about different departures from FIRE. Tests of individual beliefs are informative about departures from rationality. Tests of consensus forecasts yield additional information about the role of information frictions. Second, the seemingly contradictory findings can be in good part, though not fully, reconciled, by combining standard information frictions with a deeper departure from Bayesian updating in the direction of overreaction to news. We document this finding by studying expectations for a large set of macro and financial variables at the individual level.

We then offer a theory of individual overreaction based on diagnostic expectations (BGS 2018), a psychologically founded non-Bayesian model of belief formation. In this model, individual expectations overreact to news. At the same time, we follow Woodford (2003) and Coibion-Gorodnichenko (2015) in assuming that information is dispersed across individuals. We show that this model can qualitatively and quantitatively unify many patterns in the data, including individual overreaction and consensus underreaction to news in most cases.

We use both the Survey of Professional Forecasters (SPF) and the Blue Chip Survey, which gives us 22 expectations series in total (four variables appear in both surveys), including forecasts of real economic activity, consumption, investment, unemployment, housing starts, government expenditures, as well as multiple interest rates. SPF data are publicly available; Blue Chip data were purchased and hand-coded for the earlier part of the sample. This data expands the sources and variables analyzed by CG (2015). We report five principal findings.

First, the Rational Expectations hypothesis is consistently rejected in individual forecast data. Individual forecast errors are systematically predictable from forecast revisions.

Second, overreaction to information is the norm in individual forecast data, meaning that upward revisions are associated with realizations below forecasts. In only a few series we find individual forecaster-level underreaction.

Third, for consensus forecasts, we generally find the opposite pattern of underreaction, which confirms, using our expanded data set, the CG finding of informational rigidity.

Fourth, a model of belief formation that we call diagnostic expectations (BGS 2018) can be used to organize the evidence. The model incorporates Kahneman and Tversky’s (1972) representativeness heuristic – formalized as in Gennaioli and Shleifer (2010) and Bordalo, Coffman, Gennaioli, and Shleifer (2016), henceforth BCGS – into a framework of learning from noisy private signals.² In this model, belief distortions follow the “kernel of truth”: each forecaster overweighs the probability of states that have become *truly* more likely in light of his noisy signal. The degree of overweighting is controlled by the diagnosticity parameter θ . When $\theta = 0$, our model reduces to the CG model of information frictions, in which consensus forecasts underreact but individual level forecasts are rational (i.e., their errors are unpredictable). When $\theta > 0$, the model departs from Bayesian updating in the direction of overreaction. This departure allows us to reconcile positive consensus level and negative individual level CG coefficients. Intuitively, when $\theta > 0$ each individual forecaster overreacts to his noisy signal, so the

² Gennaioli and Shleifer (2010) proposed this model to account for lab experiments on probabilistic judgments, BCGS (2016) applied it to social stereotypes. The model has then been used to account for credit cycles (BGS 2018), and the cross section of stock returns (BGLS 2019).

individual CG coefficient is negative, but still does not react at all to the signals of other forecasters, potentially creating a positive consensus CG coefficient.

Fifth, our model has additional predictions that we check with a structural estimation exercise. In particular, our model implies that whether the consensus forecast over- or underreacts, and the strength of individual level overreaction, should depend on the characteristics of the data generating process, such as its persistence and volatility. We estimate the parameters of each series' data generating process and recover latent parameters such as the degree of diagnosticity θ and the noise in forecasters' information using the simulated method of moments. To probe the robustness of our findings, we try three different estimation methods, which yield the following robust results. First, the diagnostic parameter θ is on average around 0.5, which lies in the ballpark of estimates obtained in other contexts using different data and methods (BGS 2018, BGLS 2019). The resulting distortions in beliefs are considerable: $\theta = 0.5$ means that forecasts react to news 50% more than do rational expectations. Second, in line with our model, more persistent series exhibit weaker overreaction than less persistent ones. Finally, due to differences in persistence and volatility between series, our model captures about half of the variation in the consensus forecast rigidity among them. Allowing the diagnostic parameter to vary between series allows the model to explain most of the cross-series variation.

The paper proceeds as follows. After describing the data in Section 2, we document in Section 3 the prevalence of both forecaster level overreaction to information and consensus level rigidity. We then perform robustness checks with respect to a number of potential concerns, including forecaster heterogeneity, small sample bias, measurement error, nonstandard loss functions, and the non-normality of shocks. In Section 4 we introduce the model and show that it helps reconcile consensus and individual level predictability of forecast errors. In Section 5 we estimate the model. In Section 6 we take stock and lay out some key next steps for the fast-growing work on departures from rational expectations.

Our main empirical contribution is to carry out a systematic analysis of macroeconomic and financial forecasts and offer a reconciliation for the seemingly contradictory patterns discussed at the outset. As we shall see, unification is not complete: we cannot account for individual level underreaction to news, which we document for short-term interest rates, and which has also been documented by

Bouchaud et al. (2019) for short term earnings forecasts. We suggest in Section 6 that the kernel of truth logic offers a promising approach to reconciling these findings as well.

Our analysis also relates to other modeling approaches to expectation errors. For example, with natural expectations (Fuster, Laibson, and Mendel 2010), forecasters neglect longer lags, causing overreaction to short term changes. While our model shares some predictions with natural expectations, it make distinctive predictions, such as overreaction to longer lags, which we show more closely describe the data.³ Overconfidence, in the sense of overestimating the precision of private news, also implies an exaggerated reaction to private signals (Daniel, Hirshleifer, and Subrahmanyam 1998, Moore and Healy 2008). In independent and insightful work, Broer and Kohlhas (2019) document individual overreaction in forecasts for GDP and inflation, and consider overconfidence as the reason. In a similar vein, earlier work by Benigno and Karantounias (2019) uses overconfidence to rationalize the volatility of individual prices and the rigidity of aggregate prices. We find that diagnostic expectations can better explain several features of the data documented here and elsewhere, such as instances of consensus overreaction, individual level overreaction to the signals the forecaster attends to (which includes salient public signals), and systematic differences across series.

In our view, diagnostic expectations offer a theoretically tractable, empirically plausible, and parsimonious departure from rational expectations. They explain puzzling features of the data, and can be incorporated into quantitative models in macroeconomics and finance. More work is needed to find the best formulation, but existing estimates of the critical diagnosticity parameter can be used as a starting point in such an analysis (Bordalo, Gennaioli, Shleifer, and Terry 2019).

2. The Data

³ Incentives may distort professional forecasters' stated expectations. Ottaviani and Sorensen (2006) point out that if forecasters compete in an accuracy contest with winner-take-all rules, they overweigh private information. In contrast, Fuhrer (2019) argues that in the SPF data, individual forecast revisions can be negatively predicted from past deviations relative to consensus. Kohlhas and Walther (2018) also offer a model of asymmetric loss functions. We discuss these possibilities later in the paper.

Data on Forecasts. We collect forecast data from two sources: Survey of Professional Forecasters (SPF) and Blue Chip Financial Forecasts (Blue Chip).⁴ SPF is a survey of professional forecasters currently run by the Federal Reserve Bank of Philadelphia. At a given point in time, around 40 forecasters contribute to the SPF anonymously. SPF is conducted on a quarterly basis, around the end of the second month in the quarter. It provides both consensus forecast data and forecaster-level data. In SPF, individual forecasters are anonymous, and are identified by forecaster IDs. Forecasters report forecasts for outcomes in the current and next four quarters, typically about the level of the variable in each quarter.

Blue Chip is a survey of panelists from around 40 major financial institutions. The names of institutions and forecasters are disclosed. The survey is conducted around the beginning of each month. To match with the SPF timing, we use Blue Chip forecasts from the end-of-quarter month survey (i.e., March, June, September, and December). Blue Chip has consensus forecasts available electronically, and we digitize individual level forecasts from PDF publications. Panelists forecast outcomes in the current and next four to five quarters. For variables such as GDP, they report (annualized) quarterly growth rates. For variables such as interest rates, they report the quarterly average level. Blue Chip discloses the identity of the forecasters and each unit of observation is an institution (e.g., Goldman Sachs).

For both SPF and Blue Chip, the median (mean) duration of a panelist contributing forecasts is about 16 (23) quarters. Thus for each variable, we have an unbalanced panel. Given the timing of the SPF and Blue Chip forecasts we use, by the time the forecasts are made in quarter t (i.e. around the end of the second month in quarter t), forecasters know the actual values of variables with quarterly releases (e.g., GDP) up to quarter $t - 1$, and the actual values of variables with monthly releases (e.g., unemployment rate) up to the previous month.

Table 1 presents the list of variables we study, as well as the time range for which forecast data are available from SPF and/or Blue Chip. These variables cover both macroeconomic outcomes, such as GDP, price indices, consumption, investment, unemployment, government consumption, and financial variables, primarily yields on government bonds and corporate bonds. SPF covers most of the macro variables and

⁴ Blue Chip provides two sets of forecast data: Blue Chip Economic Indicators (BCEI) and Blue Chip Financial Forecasts (BCFF). We do not use BCEI since historical forecaster-level data are only available for BCFF.

selected interest rates (three month Treasuries, ten year Treasuries, and AAA corporate bonds). Blue Chip includes real GDP and a larger set of interest rates (Fed Funds, three month, five year, and ten year Treasuries, AAA as well as BAA corporate bonds). Relative to CG (2015), we add two SPF variables (nominal GDP and the ten-year Treasury rate) as well as the Blue Chip forecasts.

Table 1. List of Variables

This table lists our outcome variables, the forecast source, and the period for which forecasts are available.

Variable	SPF	Blue Chip	Abbreviation
Nominal GDP	1968Q4--2016Q4	N/A	NGDP
Real GDP	1968Q4--2016Q4	1999Q1--2016Q4	RGDP
Industrial Production Index	1968Q4--2016Q4	N/A	INPROD
GDP Price Deflator	1968Q4--2016Q4	N/A	PGDP
Consumer Price Index	1981Q3--2016Q4	N/A	CPI
Real Consumption	1981Q3--2016Q4	N/A	RCONSUM
Real Non-Residential Investment	1981Q3--2016Q4	N/A	RNRESIN
Real Residential Investment	1981Q3--2016Q4	N/A	RRESIN
Federal Government Consumption	1981Q3--2016Q4	N/A	RGF
State & Local Government Consumption	1981Q3--2016Q4	N/A	RGSL
Housing Starts	1968Q4--2016Q4	N/A	HOUSING
Unemployment Rate	1968Q4--2016Q4	N/A	UNEMP
Fed Funds Rate	N/A	1983Q1--2016Q4	FF
3M Treasury Rate	1981Q3--2016Q4	1983Q1--2016Q4	TB3M
5Y Treasury Rate	N/A	1988Q1--2016Q4	TN5Y
10Y Treasury Rate	1992Q1--2016Q4	1993Q1--2016Q4	TN10Y
AAA Bond Rate	1981Q3--2016Q4	1984Q1--2016Q4	AAA
BAA Bond Rate	N/A	2000Q1--2016Q4	BAA

We use an annual forecast horizon. For GDP and inflation we look at the annual growth rate from quarter $t - 1$ to quarter $t + 3$. In SPF, the forecasts for these variables are in levels (e.g. level of GDP), so we transform them into implied growth rates. Actual GDP of quarter $t - 1$ is known at the time of the forecast, consistent with the forecasters' information sets. Blue Chip reports forecasts of quarterly growth rates, so we add up these forecasts in quarters t to $t + 3$. For variables such as the unemployment rate and interest rates, we look at the level in quarter $t + 3$. Both SPF and Blue Chip have direct forecasts of the quarterly average level in quarter $t + 3$. We winsorize outliers by removing, for each forecast horizon in a given quarter, forecasts that are more than 5 interquartile ranges away from the median. Winsorizing forecasts before constructing forecast revisions and errors ensures consistency. We keep forecasters with at least 10 observations in all analyses. Appendix B provides a description of variable construction.

Consensus forecasts are computed as means from individual level forecasts available at a point in time. We calculate forecasts, forecast errors, and forecast revisions at the individual level, and then average them across forecasters to compute the consensus.⁵

Data on Actual Outcomes. The values of macroeconomic variables are released quarterly but are often subsequently revised. To match as closely as possible the forecasters' information set, we focus on initial releases from Philadelphia Fed's Real-Time Data Set for Macroeconomists.⁶ For example, for actual GDP growth from quarter $t - 1$ to quarter $t + 3$, we use the initial release of GDP_{t+3} in quarter $t + 4$ divided by the contemporaneous release of GDP_{t-1} . We perform robustness checks using other vintages of actual outcomes including the latest release. For financial variables, the actual outcomes are available daily and are permanent (not revised). We use historical data from the Federal Reserve Bank of St. Louis. In addition, we always study the properties of the actuals (mean, standard deviation, persistence, etc) using the same time periods as the corresponding forecasts. The same variable from SPF and Blue Chip may have slightly different actuals when the two datasets cover different time periods.

Summary Statistics. We present summary statistics of average forecasts and corresponding actuals in Appendix C Table C1. Here we present summary statistics of forecast errors and revisions. Table 2 shows the consensus forecasts errors and revisions at a horizon of quarter $t+3$, as well as the dispersion of individual forecasts. The table also shows statistics for the quarterly share of forecasters with no meaningful revisions,⁷ and a measure of the dispersion in revisions, namely the probability that less than 80% of forecasters revise in the same direction.

Table 2. Summary Statistics

Columns (1) to (5) show statistics for errors and revisions of consensus (average) forecasts. Errors are actuals minus forecasts, and actuals are realized outcomes corresponding to the forecasts. Standard errors of forecast errors are calculated with Newey and West (1994) standard errors. Revisions are forecasts of the outcome made in quarter t minus forecasts of the same outcome made in quarter $t-1$. Columns (6) to (8) show statistics of

⁵ There could be small differences in the set of forecasters who issue a forecast in quarter t , and those who revise their forecast at t (these need to be present at $t - 1$ as well). This issue does not affect our results, which are robust to considering only forecasters who have both forecasts and forecast revisions.

⁶ When forecasters make forecasts in quarter t , only initial releases of macro variables in quarter $t-1$ are available.

⁷ We categorize a forecaster as making no revision if he provides non-missing forecasts in both quarters $t-1$ and t , and the forecasts change by less than 0.01 percentage points. For variables in rates, the data is often rounded to the first decimal point, and this rounding may lead to a higher incidence of no-revision.

individual level forecasts. The forecast dispersion column shows the mean of quarterly standard deviations of individual level forecasts. Non-revisions are instances where forecasts are available in both quarter t and quarter $t-1$ and the change in the value is less than 0.01 percentage points. The non-revision column shows the mean of quarterly non-revision shares. The final column shows the fraction of quarters where less than 80% of the forecasters revise in the same direction. All values are in percentages. The format for nominal GDP to housing start is the growth rate from the end of quarter $t-1$ to the end of quarter $t+3$. The format for unemployment rate to BAA corporate bond rate is the average level in quarter $t+3$.

Variable	Consensus						Individual	
	Errors			Revisions		Forecast	Non-rev	Pr(<80%
	Mean	SD	SE	Mean	SD	Dispersion	Share	revise same direction)
	(1)	(2)	(3)	(4)	(5)	(6)	(7)	(8)
Nominal GDP (SPF)	-0.30	1.73	0.20	-0.16	0.71	1.00	0.02	0.77
Real GDP (SPF)	-0.23	1.71	0.20	-0.18	0.62	0.79	0.02	0.74
Real GDP (BC)	-0.07	1.28	0.19	-0.12	0.47	0.38	0.05	0.64
GDP Price Index (SPF)	-0.06	1.14	0.15	0.01	0.44	0.62	0.05	0.78
CPI (SPF)	-0.26	1.07	0.14	-0.12	0.47	0.53	0.07	0.70
Real Consumption (SPF)	0.35	1.13	0.16	-0.07	0.44	0.60	0.03	0.77
Industrial Production (SPF)	-1.06	3.85	0.43	-0.34	1.09	1.57	0.07	0.76
Real Non-Residential Investment (SPF)	0.22	5.79	0.82	-0.29	1.80	2.21	0.02	0.72
Real Residential Investment (SPF)	-0.06	8.35	1.21	-0.66	2.42	4.02	0.03	0.84
Real Federal Government Consumption (SPF)	0.02	3.19	0.41	0.10	1.19	1.93	0.07	0.88
Real State&Local Govt Consumption (SPF)	0.04	1.14	0.16	-0.05	0.35	0.92	0.11	0.90
Housing Start (SPF)	-3.43	18.38	2.35	-2.24	6.04	8.35	0.00	0.66
Unemployment (SPF)	0.00	0.76	0.09	0.05	0.32	0.29	0.18	0.78
Fed Funds Rate (BC)	-0.41	1.01	0.15	-0.18	0.53	0.45	0.23	0.70
3M Treasury Rate (SPF)	-0.54	1.17	0.16	-0.20	0.52	0.45	0.15	0.69
3M Treasury Rate (BC)	-0.52	1.01	0.15	-0.19	0.50	0.45	0.17	0.68
5Y Treasury Rate (BC)	-0.42	0.87	0.13	-0.16	0.45	0.40	0.12	0.62
10Y Treasury Rate (SPF)	-0.49	0.74	0.11	-0.13	0.37	0.37	0.10	0.61
10Y Treasury Rate (BC)	-0.44	0.74	0.11	-0.14	0.39	0.34	0.13	0.54
AAA Corporate Bond Rate (SPF)	-0.47	0.85	0.11	-0.12	0.39	0.50	0.08	0.72
AAA Corporate Bond Rate (BC)	-0.43	0.69	0.10	-0.13	0.36	0.45	0.12	0.70
BAA Corporate Bond Rate (BC)	-0.46	0.66	0.12	-0.15	0.31	0.40	0.12	0.77

Several patterns emerge from Table 2. First, the consensus forecast error is statistically indistinguishable from zero for most variables. The main exceptions are interest rates, for which consensus forecasts are systematically above realizations. This is likely due to the fact that interest rates declined secularly during our sample period, while forecasters adjusted only partially to the trend. Second, there is significant dispersion of forecasts and revisions at each point in time. Third, the share of non-revising forecasters is small, and revisions go in different directions. As the final column shows, it is uncommon to have quarters where more than 80% forecasters revise in the same direction. This suggests that different forecasters

observe or attend to different news, either because they are exposed to different information or because they use different models, or both.

3. Properties of Individual and Consensus Forecasts

Many tests of the rational expectations hypothesis assess whether forecast errors can be predicted using information available at the time the forecast is made. Understanding whether departures from rational expectations are due to over- or underreaction to information is more challenging, since the forecaster's full information set is not directly observed by the econometrician. To do so, we build on the method developed by CG (2015), which tests whether errors of consensus forecasts are predictable from revisions of consensus forecasts, assuming that revisions measure the reaction to available news.

While the CG test was originally developed to assess whether consensus forecasts underreact, or are rigid, relative to the full information rational expectations (FIRE) benchmark, it can be used as an empirical test on any expectations panel data for which forecast revisions can be computed. We first describe the general structure of the test, and then discuss its implementation and interpretation using data on individual level as well as consensus forecasts.

Starting with the original setting in CG (2015), denote by $x_{t+h|t}$ the consensus forecast made at time t about the future value x_{t+h} of a variable. That is, $x_{t+h|t} = \frac{1}{I} \sum_i x_{t+h|t}^i$, where $x_{t+h|t}^i$ is the forecast of individual i and $I > 1$ is the number of forecasters. Denote by $x_{t+h|t-1}$ the forecast of the same variable in the previous period. The h -periods ahead forecast revision at t is given by $FR_{t,h} = (x_{t+h|t} - x_{t+h|t-1})$, or the one period change in the forecast about x_{t+h} . The predictability of forecast errors is then assessed by estimating the regression:

$$x_{t+h} - x_{t+h|t} = \beta_0 + \beta_1 FR_{t,h} + \epsilon_{t,t+h}. \quad (1)$$

If forecast errors are not predictable from forecast revisions, then $\beta_1 = 0$. This should hold under Full Information Rational Expectations (FIRE), where each forecaster is rational and all forecasters share the same, full information set. In this case, all forecasters provide the same rational forecast and forecast

errors should have no predictability. On the other hand, a positive coefficient β_1 implies that when the average forecast revision is positive, $FR_{t,h} > 0$, the consensus forecast is not optimistic enough; similarly, when the average forecast revision is negative, $FR_{t,h} < 0$, the consensus forecast is not pessimistic enough. Thus $\beta_1 > 0$ indicates underreaction of consensus forecasts relative to FIRE. By the same logic, $\beta_1 < 0$ indicates overreaction of consensus forecasts relative to FIRE.

CG (2015) find $\beta_1 > 0$ for inflation expectations.⁸ This finding rejects FIRE, but not rational expectations as such. Indeed, CG show that $\beta_1 > 0$ can be obtained in models that only relax the full information assumption, while individual forecasters rationally update their forecasts based on noisy private signals. Maintaining rationality of updating, however, is not without consequences. It implies, in particular, that at the individual level forecast errors should remain unpredictable. To assess rationality, and to learn how forecasters update, we must perform the error predictability test at the individual level.

To analyze forecast error predictability at the individual level, we adapt test (1) using two different methods. Using individual forecast revisions $FR_{t,h}^i = (x_{t+h|t}^i - x_{t+h|t-1}^i)$ and forecast errors $x_{t+h} - x_{t+h|t}^i$, we first pool forecasters and estimate a common coefficient β_1^p from the regression:

$$x_{t+h} - x_{t+h|t}^i = \beta_0^p + \beta_1^p FR_{t,h}^i + \epsilon_{t,t+h}^i. \quad (2)$$

Superscript p on the coefficients refers to the pooling of individual level data. $\beta_1^p > 0$ indicates that the average forecaster underreacts to his own information, while $\beta_1^p < 0$ indicates that the average forecaster overreacts. Rational expectations imply that, even with information frictions, $\beta_1^p = 0$.

The second method is to run forecaster-by-forecaster regressions:

$$x_{t+h} - x_{t+h|t}^i = \beta_0^i + \beta_1^i FR_{t,h}^i + v_{t,t+h}^i, \quad i = 1, \dots, I \quad (3)$$

⁸ Specifically, CG (2015) estimate Equation (1) for the consensus forecast of the GDP price deflator (PGDP_SPF) at a horizon $h = 3$ and find $\beta_1 = 1.2$, which is robust to a number of controls. They also run Equation (1) for 13 SPF variables by pooling forecast horizons from $h = 0$ to $h = 3$, and find qualitatively similar results, with 8 out of 13 variables exhibiting significantly positive β_1 's and the average coefficient being close to 0.7 (see Figure 1 Panel B of CG 2015). The general message is that consensus forecasts of macroeconomic variables exhibit rigidity.

which yields a distribution of individual coefficients β_1^i , $i = 1, \dots, I$. We can then take the median coefficient as indicative of whether the majority of forecasters over- or underreacts. Again, rational expectations imply $\beta_1^i = 0$ for all i .

The forecaster-by-forecaster specification in (3) has two main advantages. First, it does not impose the restriction of a common coefficient β_1^p . Second, it controls for persistent individual level differences in forecaster optimism (e.g., due to different priors). Heterogeneity of this type may create a bias towards underreaction in the pooled data. Specifically, optimistic forecasters tend to make negative errors and to receive bad news, and thus make negative revisions, leading to a spurious positive correlation between forecast revisions and forecast errors. On the other hand, the forecaster-by-forecaster specification has the shortcoming that there are a limited number of observations for each forecaster for each series, which decreases statistical power and makes it difficult to reliably estimate β_1^i .

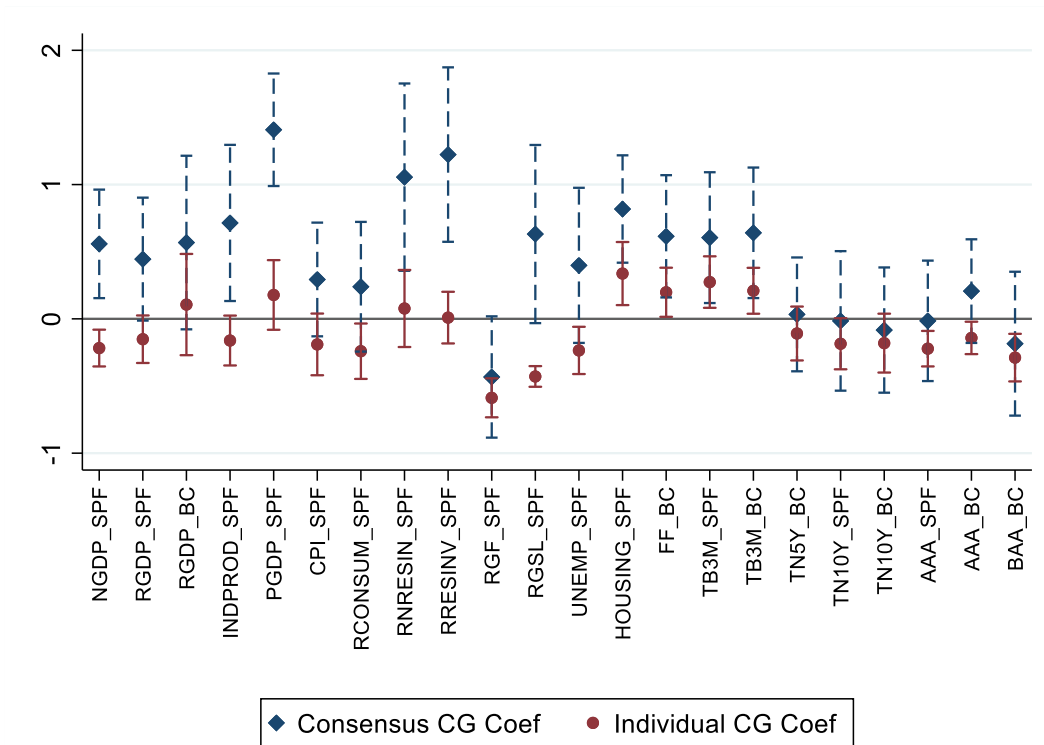
What does CG's (2015) general message that consensus forecasts of macroeconomic variables exhibit rigidity imply for the updating of individual forecasters? As mentioned above, rigidity of the consensus ($\beta_1 > 0$) rejects FIRE, and is consistent with information frictions. However, it does not exclude the co-existence of these frictions with violations of rationality ($\beta_1^p \neq 0, \beta_1^i \neq 0$) in the form of over- or underreaction. In particular, $\beta_1 > 0$ is also consistent with no information rigidity at all, and predictability being entirely driven by individual level underreaction ($\beta_1 = \beta_1^p > 0$). Without looking at individual forecasts, there is no way to tell how forecasters update and which mechanism fits the data best.

Figure 1 plots the estimates of Equations (1) and (2), and Table 3 shows the point estimates, standard errors, and p -values. For consensus forecasts, the diamonds in Figure 1 and columns (1) to (3) in Table 3 show results for the coefficient β_1 in Equation (1), for our 22 series and the same baseline horizon $h = 3$. The standard errors are Newey-West with the automatic bandwidth selection following Newey and West (1994). The estimated β_1 is positive for 17 out of 22 series, statistically significant for 9 of them at the 5% confidence level, and for a further 3 series at the 10% level. Our point estimate for inflation forecasts coincides with CG's. While results for the other SPF series are not directly comparable (since CG pool across forecast horizons), the estimates lie in a similar range. The one exception is the consensus forecast

of RGF_SPF (federal government spending), which displays strong overreaction. Results from the Blue Chip survey align well with SPF where they overlap, but do not exhibit significant consensus predictability for the remaining financial series.

Figure 1. Forecast Error on Forecast Revision (CG) Regression Results

This figure plots the forecast error on forecast revision regression coefficients. The diamonds represent the coefficient β_1 in Equation (1) using consensus forecasts, and the circles represent the coefficient β_1^p in Equation (2) using individual forecasts. Standard errors are Newey-West for consensus time series regressions, and clustered by forecaster and time for pooled individual level panel regressions.



For the individual level forecasts, the circles in Figure 1 and columns (4) to (7) in Table 3 show results for the coefficient β_1^p in Equation (2), using pooled individual level regressions), for our 22 series and the same baseline horizon $h = 3$. The results are essentially reversed from those using consensus forecasts: at the individual level, the average forecaster appears to mostly overreact to information, as reflected by a negative β_1^p coefficient. The estimated β_1^p is negative for 14 out of the 22 series (12 out of 18 variables), and significantly negative for 8 series at the 5% confidence level, and for 4 other series at the 10% level. Except for short-term interest rates (Fed Funds and 3-months T-bill rate), all financial variables display overreaction. But many macro variables also display individual level overreaction, including nominal GDP, real GDP (in SPF, not in Blue Chip), industrial production, CPI, real consumption,

real federal government expenditures, real state and local government expenditures. Estimates for the Fed Funds rate, the 3-months T-bill rate and unemployment rate display individual level underreaction with positive and statistically significant β_1^p . GDP price deflator inflation, real GDP in Blue Chip, and non-residential investment display neither over- nor underreaction (β_1^p close to zero).

Table 3. Error-on-Revision Regression Results

This table shows coefficients from the CG (forecast error on forecast revision) regression. Columns (1) to (6) show the coefficients of consensus time-series regressions, and individual level pooled panel regressions, together with standard errors and p -values. Column (7) shows the median coefficients in forecaster-by-forecaster regressions. For consensus time-series regressions, standard errors are Newey-West with the automatic bandwidth selection procedure of Newey and West (1994). For individual level panel regressions, standard errors are clustered by both forecaster and time.

Variable	Consensus			Individual			Median
	β_1	s.e.	p -val	β_1^p	s.e.	p -val	
(1)	(2)	(3)	(4)	(5)	(6)	(7)	
Nominal GDP (SPF)	0.56	0.21	0.01	-0.22	0.07	0.00	-0.20
Real GDP (SPF)	0.44	0.23	0.06	-0.15	0.09	0.09	-0.08
Real GDP (BC)	0.57	0.33	0.08	0.11	0.19	0.58	-0.03
GDP Price Index Inflation (SPF)	1.41	0.21	0.00	0.18	0.13	0.18	-0.11
CPI (SPF)	0.29	0.22	0.17	-0.19	0.12	0.10	-0.25
Real Consumption (SPF)	0.24	0.25	0.33	-0.24	0.11	0.02	-0.26
Industrial Production (SPF)	0.71	0.30	0.02	-0.16	0.09	0.09	-0.19
Real Non-Residential Investment (SPF)	1.06	0.36	0.00	0.08	0.15	0.60	0.09
Real Residential Investment (SPF)	1.22	0.33	0.00	0.01	0.10	0.92	-0.09
Real Federal Government Consumption (SPF)	-0.43	0.23	0.06	-0.59	0.07	0.00	-0.52
Real State & Local Govt Consumption (SPF)	0.63	0.34	0.06	-0.43	0.04	0.00	-0.44
Housing Start (SPF)	0.40	0.29	0.18	-0.23	0.09	0.01	-0.27
Unemployment (SPF)	0.82	0.2	0.00	0.34	0.12	0.00	0.23
Fed Funds Rate (BC)	0.61	0.23	0.01	0.20	0.09	0.03	0.22
3M Treasury Rate (SPF)	0.60	0.25	0.01	0.27	0.10	0.01	0.28
3M Treasury Rate (BC)	0.64	0.25	0.01	0.21	0.09	0.02	0.17
5Y Treasury Rate (BC)	0.03	0.22	0.88	-0.11	0.10	0.29	-0.17
10Y Treasury Rate (SPF)	-0.02	0.27	0.95	-0.19	0.10	0.06	-0.24
10Y Treasury Rate (BC)	-0.08	0.24	0.73	-0.18	0.11	0.11	-0.29
AAA Corporate Bond Rate (SPF)	-0.01	0.23	0.95	-0.22	0.07	0.00	-0.32
AAA Corporate Bond Rate (BC)	0.21	0.20	0.29	-0.14	0.06	0.02	-0.27
BAA Corporate Bond Rate (BC)	-0.18	0.27	0.50	-0.29	0.09	0.00	-0.32

To account for persistent differences among forecasters such as those stemming from priors, Table C2 in Appendix C also reports regressions with forecaster fixed effects. Now the estimated β_1^p is negative for 16 series, and significantly negative for 12 series at the 5% confidence level and for 2 other series at

the 10% level. Finally, Table 3 column (7) shows the median coefficient from the forecaster-by-forecaster regression of Equation (3). In Appendix C Table C3, we report confidence intervals of the median coefficient using block bootstrap.⁹ We resample time periods from the panel using blocks of 20 quarters each (we keep all forecasts made during each block of time period), and compute the median coefficient in 500 bootstrap samples. The results confirm our previous findings from the pooled specification. The median coefficient is negative at the 5% confidence level for 13 out of 22 series, and is very close to the results of the baseline regression in Equation (2) above. The median forecast for short-term interest rates (the Fed funds rate and the 3 months T-bill rate) again display underreaction, while that for Real GDP, GDP price deflator, and investment displays neither over nor underreaction. Overall, as Figure 1 and Table 3 show, the prevalent finding is overreaction.

The forecast series are not all independent. The CPI index and the GDP deflator are highly correlated, as are the different short-term interest rate series. Nonetheless, a general message emerges from the data. At the consensus level we mostly see informational rigidity, particularly for the macro variables and short term interest rates. At the individual level, in contrast, we mostly see overreaction, particularly for longer term interest rates but also for several macro variables. This evidence suggests that a story based entirely on information rigidities cannot fit the data. Departures from rationality are needed.

3.1 Robustness Checks

There are possible concerns that predictability of forecast errors might arise from features of the data unrelated to individuals' under- or overreaction to news. We next show that our results are robust to several such confounds.

Limited Duration. We first discuss problems related to limited duration (small T). Finite-sample biases exist in time series regressions (Kendall 1954, Stambaugh 1999) and panel regressions with fixed effects (Nickell 1981). These finite sample biases are large when the predictor variables are persistent. Because the predictor variable in the CG regressions, the forecast revision, has low persistence in the data (about

⁹ We have less power to assess the significance of individual coefficients. For most variables, 20-30% of forecasters have negative and significant coefficients, while about 5% of them have positive and significant coefficients.

zero for most variables at the individual level), this issue should be small. Table 3 shows the pooled individual level panel tests with no individual fixed effects, which are not subject to the Nickell bias (Hjalmarsson 2008). In addition, the results with individual fixed effects (Appendix C Table C2) and without fixed effects (Table 3) are similar, which also alleviates the finite-sample concern. For the forecaster-by-forecaster time series regressions, we also perform finite-sample Stambaugh bias-adjusted regressions and report the bias-adjusted median coefficients in Appendix C Table C3. The results are very similar to those from the OLS regressions reported in Table 3 column (7).

Measurement Error. We also perform robustness checks for measurement error in both forecasts and actual outcomes. Forecasts measured with noise can mechanically lead to negative predictability of forecast errors in individual level tests: a positive shock increases the measured forecast revision and decreases the forecast error. To address this concern, we regress forecast errors at a certain horizon on forecast revisions for a different horizon. To the extent that overreactions are positively correlated for forecasts at different horizons, this specification would still yield a negative coefficient, while avoiding the mechanical measurement error problem of overlap in the left- and right-hand side variables.

We implement this general strategy in two ways. First, in Appendix C, Table C4 we regress the forecast error at horizon $t + 2$, that is $(x_{t+2} - x_{t+2|t}^i)$, on the forecast revision at horizon $t + 3$, that is $(x_{t+3|t}^i - x_{t+3|t-1}^i)$. We find strong negative predictability at the individual level in this specification as well. Second, in Section 4.2 and Appendix E we consider which series are better described by a hump-shaped, AR(2) process than by an AR(1) process. In this context, we regress the forecast error at horizon $t + 3$, $(x_{t+3} - x_{t+3|t}^i)$, on the forecast revisions for periods $t + 2$ and $t + 1$, $(x_{t+2|t}^i - x_{t+2|t-1}^i)$ and $(x_{t+1|t}^i - x_{t+1|t-1}^i)$ respectively, with similar results (Appendix E, Tables E2). These findings alleviate concerns about measurement error in forecasts.

In addition, we assess the robustness of the results with respect to the measurement of the outcome variable. For example, in Appendix C Table C5, we measure the outcome variable using its most recent release. The results are similar to those in Table 3.

Finally, in Section 5 we estimate our model without using information from the CG coefficients; we obtain estimates that also indicate significant individual level overreaction and generate CG regression coefficients very similar to the data. These findings assuage measurement error concerns.

Forecaster Incentives and Loss Functions. Another concern is that forecast errors reflect not cognitive limitations but forecasters' biased incentives. Although a forecaster's objective is difficult to observe, we can discuss the implications of several forecaster loss functions proposed in the literature.

With an asymmetric loss function (Capistran and Timmerman 2009), the overreaction pattern in Table 3 may be generated by a combination of i) an asymmetric cost of over- or under-predictions, and ii) time varying volatility (Pesaran and Weale 2006). One key prediction here is that asymmetric loss functions would generate non-zero average forecast errors. In the data, however, forecasts for most variables are not systematically biased. The average consensus forecast errors are typically small and insignificant (Table 2).¹⁰ This is also true for individual forecast errors: we fail to reject that the average error is different from zero for about 60% of forecasters for the macroeconomic variables.¹¹

Other types of incentives stem from forecaster reputations. One of them is forecast smoothing. In response to news at t , forecasters may wish to minimize forecast revisions by taking into account the previous forecast $x_{t+h|t-1}^i$ as well as the future path $x_{t+h|t+j}^i$. To assess the relevance of this mechanism, note that forecast smoothing should reduce the current revision for the current quarter ($h = 0$), creating underreaction. This prediction is contradicted by the data: negative predictability prevails even at this horizon (Appendix C, Table C6).

Reputational mechanisms may also create strategic interactions among forecasters, again leading to predictable individual level forecast errors. On the one hand, individuals may wish to stay close to consensus forecasts (Morris and Shin 2002, Fuhrer 2019). Let $\tilde{x}_{t+h|t}^i = \alpha x_{t+h|t}^i + (1 - \alpha)\tilde{x}_{t+h|t}$, where $x_{t+h|t}^i$ is the individual rational forecast and $\tilde{x}_{t+h|t}$ is the average contemporaneous forecast with this bias

¹⁰ As we already discussed, the only exception is interest rate variables, but here the systematic average error is most likely due to the downward trend in interest rates, not to asymmetric loss functions. There is no reason to expect forecasters' loss functions to be asymmetric for interest rates but not for macro variables.

¹¹ Some individual forecasters have average errors that are significantly different from zero for some series, but these average out in the population for nearly all series.

(which coincides with the consensus without this bias). Our benchmark model has $\alpha = 1$ but for $\alpha < 1$ forecasters put weight on others' signals at the expense of their own. This force causes individual forecasts to be strategic complements. As a result, it causes individual level underreaction, or a positive individual level CG coefficients, contrary to our findings.¹²

In Appendix C Table C7 we address this mechanism by controlling in the pooled specification of Equation (2) for the deviation of the forecast in quarter $t - 1$ from the consensus ($x_{t+h|t-1}^i - x_{t+h|t}$). The consensus is released between quarter $t - 1$ and quarter t , so controlling for the deviation takes into account potential news and adjustments related to the release of the consensus. The results in Table C7 show that the coefficient on each individual's own forecast revision remains negative and significant in this case. In other words, forecasters overreact significantly to their own information not related to the consensus forecasts. If anything, the coefficient on own forecast revision is often more negative once we control for the deviation from past consensus. To the extent that there are incentives to be close to the consensus, such incentives may bias towards underreaction, in line with the discussion above.

A different type of reputational incentive is that individual forecasters may wish to distinguish themselves from others in order to prevail in a winner-take-all context, as in Ottaviani and Sorensen (2006). In this case, individual forecasts are strategic substitutes, which would create a form of overreaction. However, the similarity of our results across datasets suggests that this reputational incentive and more generally distorted incentives cannot be the whole story. The SPF panelists are anonymous, the Blue Chip ones are not. We find significant evidence of overreaction even in the anonymous SPF data.

Fat tailed shocks. In our data both fundamentals and forecast revisions have high kurtosis, which manifests in a sizable number of large shocks and forecast revisions. To see whether fat tailed shocks may, by themselves, create a false impression of overreaction, in Appendix D we consider a learning setting with fat tailed fundamental shocks. Without normality, we can no longer use the Kalman filter, but instead need to use the particle filter (Liu and Chen, 1998; Doucet, de Freitas, and Gordon, 2001). We find that when

¹² Formally, denote $\widetilde{FE}_{t+h,t}^i = x_{t+h} - \widetilde{x}_{t+h|t}^i$ the forecast error and $\widetilde{FR}_{t+h,t}^i = \widetilde{x}_{t+h|t}^i - \widetilde{x}_{t+h|t-1}^i$ the forecast revision. It follows that $\widetilde{FE}_{t+h,t}^i = \alpha FE_{t+h,t}^i + (1 - \alpha) FE_{t+h|t}$ and similarly $\widetilde{FR}_{t+h,t}^i = \alpha FR_{t+h,t}^i + (1 - \alpha) FR_{t+h|t}$. Then $cov(\widetilde{FE}_{t+h,t}^i, \widetilde{FR}_{t+h,t}^i) > 0$ follows from $cov(FE_{t+h,t}^i, FR_{t+h,t}^i) = 0$ and $cov(FE_{t+h|t}, FR_{t+h|t}) > 0$ under noisy rational expectations, together with $cov(FE_{t+h,t}^i, FR_{t+h|t}), cov(FE_{t+h|t}, FR_{t+h,t}^i) > 0$.

forecasts are produced using the particle filter under rational expectations, individual forecast errors are not predictable from forecast revisions, and thus cannot explain the evidence. In Appendix F we estimate a modified particle filter that allows for overreaction to news, and find that fat tailed shocks do not significantly affect our quantitative estimates. Because fat tails do not appear to affect our results, we maintain the more tractable assumption of normality in the theoretical analysis.¹³

4. Diagnostic Expectations

The evidence raises two questions. First, how can informational rigidity in consensus beliefs be reconciled with overreaction at the individual level? Second, why do the magnitudes of individual overreaction and consensus rigidity vary across variables? This section introduces a model of diagnostic expectations and shows that it can answer the first question. We then develop additional predictions of the model and in Section 5 show that they can answer the second question.

4.1 The Diagnostic Kalman Filter and CG coefficients

At each time t , the target of forecasts is a hidden state x_{t+h} whose current value x_t is not directly observed. What is observed instead is a noisy signal s_t^i :

$$s_t^i = x_t + \epsilon_t^i, \quad (4)$$

where ϵ_t^i is noise, i.i.d. normally distributed across forecasters and over time, with mean zero and variance σ_ϵ^2 . Heterogeneity in information is necessary to capture the cross-sectional heterogeneity in forecasts documented in Table 2. The signal observed by the forecaster is informative about a hidden and persistent state x_t that evolves according to an AR(1) process:

$$x_t = \rho x_{t-1} + u_t, \quad (5)$$

where u_t is a normal shock with mean zero and variance σ_u^2 . This AR(1) setting, also considered by CG (2015), yields convenient closed form predictions. Naturally, some variables may be better described by

¹³ Apart from fat tails, skewness of shocks may also lead to systematically biased forecasts under Bayesian updating (Orlik and Veldkamp 2015). As we saw in Table 2, in our data forecasts are not biased on average.

richer processes, such as VAR (CG 2015) or hump-shaped dynamics (Fuster, Laibson, Mendel 2010). In Section 4.2, we perform several exercises allowing for AR(2) processes and show that the main findings go through. As in CG (2015), restricting our attention to AR(1) does not significantly change the analysis.

One can think of the signal in (4) as noisy information conveyed both by public indicators such as GDP or interest rates, and by private news capturing the forecaster’s expertise or contacts in the industry.¹⁴ The forecaster then uses these combined signals to forecast the future value of the relevant series. The series itself (say GDP) consists of the persistent component x_t plus a random shock, so that the forecasting problem is equivalent to anticipating future values of x_t . We also explore a more detailed information structure in which the forecaster separately observes a private and a public signal. Specifically, we consider the cases where the public signal is a noisy version of the current state x_t (Corollary 1) or where it is the past realized x_{t-1} . This is equivalent to allowing forecasters to observe past consensus forecasts (Appendix A, Lemma A.1). Both cases yield results very similar to the current setup.

Another interpretation, adopted in CG (2015), is that s_t^i reflects the rational inattention to the series x_t that the forecaster is trying to predict (Sims 2003, Woodford 2003). Forecasters could in principle observe x_t but doing so is too costly, so they observe a noisy proxy and optimally use it in their forecasts.¹⁵ In this interpretation, differences across forecasters may be due to the fact that they differ in the extent to which they pay attention to different pieces of information (which is in principle publicly available but costly to process). Under both interpretations, a Bayesian forecaster optimally filters noise in his own signal. We thus refer to this model, under both interpretations, as “Noisy Rational Expectations.”

A Bayesian, or rational, forecaster enters period t carrying from the previous period beliefs about x_t summarized by a probability density $f(x_t|S_{t-1}^i)$, where S_{t-1}^i denotes the full history of signals observed by this forecaster. In period t , the forecaster observes a new signal s_t^i in light of which he updates his estimate of the current state using Bayes’ rule:

¹⁴ Consistent with the presence of forecaster-specific information, Berger, Erhmann, and Fratzscher (2011) show that the geographical location of forecasters influences their predictions of monetary policy decisions.

¹⁵ As CG show, the same predictions are obtained if rational inattention is modelled as in Mankiw and Reis (2002), where agents observe the same information but only sporadically revise their predictions.

$$f(x_t|S_t^i) = \frac{f(s_t^i|x_t)f(x_t|S_{t-1}^i)}{\int f(s_t^i|x)f(x|S_{t-1}^i)dx}. \quad (6)$$

Equation (6) iteratively defines the forecaster's beliefs. With normal shocks, $f(x_t|S_t^i)$ is described by the Kalman filter. A rational forecaster estimates the current state at $x_{t|t}^i = \int xf(x|S_t^i)dx$ and forecasts future values using the AR(1) structure, so $x_{t+h|t}^i = \rho^h x_{t|t}^i$.

We allow beliefs to be distorted by Kahneman and Tversky's representativeness heuristic, as in our model of diagnostic expectations. In line with BGLS (2019) proposal for a diagnostic Kalman filter, we define the representativeness of a state x at t as the likelihood ratio:

$$R_t(x) = \frac{f(x|S_t^i)}{f(x|S_{t-1}^i \cup \{x_{t|t-1}^i\})}. \quad (7)$$

State x is more representative at t if the signal s_t^i received in this period raises the probability of that state relative to the case where the news equal the ex-ante forecast, $s_t^i = x_{t|t-1}^i$, as described in the denominator of (7). For simplicity, with some abuse of terminology, we refer to this case as receiving no news.

Intuitively, the most representative states are those whose likelihood has increased the most in light of recent data. Specification (7) assumes that recent data equals the latest signal. However, as we discuss in BGLS (2019), the reference likelihood in the denominator of (7) could capture more remote information. In BGLS (2019) we estimate a flexible specification and find that, in the context of listed U.S. firms, representativeness is best defined with respect to news received over the previous three years. Different lags in Equation (7) preserve the model's main predictions but introduce further structure that may be useful to account for the data.¹⁶

The forecaster then overweighs representative states by using the distorted posterior:

$$f^\theta(x_t|S_t^i) = f(x_t|S_t^i)R_t(x_t)^\theta \frac{1}{Z_t}, \quad (8)$$

¹⁶ When the reference distribution in Equation (7) is defined over longer term lags, diagnostic expectations accommodate both overreaction and some positive serial correlation of forecast errors. Also, the reference distribution in Equation (7) can be defined to be the past distribution $f(x|S_{t-1}^i)$, as opposed to $f(x|S_{t-1}^i \cup \{x_{t|t-1}^i\})$ (D'Arienzo 2019). This specification has very similar properties for our purposes but introduces a systematic variation in errors over the term structure. We discuss this work in Section 6.

where Z_t is a normalization factor ensuring that $f^\theta(x_t|S_t^i)$ integrates to one. Parameter $\theta \geq 0$ denotes the extent to which beliefs depart from rational updating due to representativeness. For $\theta = 0$ beliefs are rational, described by the Bayesian conditional distribution $f(x_t|S_t^i)$. For $\theta > 0$ the diagnostic density $f^\theta(x_t|S_t^i)$ inflates the probability of representative states and deflates the probability of unrepresentative ones. Mistakes occur because states that have become relatively more likely may still be unlikely in absolute terms. For simplicity, we assume here that all forecasters have the same distortion θ , but later discuss what happens when this assumption is relaxed.

We think of Equation (8) as describing distorted retrieval from memory. The conditional distributions $f(x|S_t^i)$ are stored in the forecaster's memory database. However, not all information in the database is equally accessible. Future events that are relatively more associated with news -- in the sense of becoming more likely in light of this news (i.e. more likely in $f(x|S_t^i)$ than in $f(x|S_{t-1}^i \cup \{x_{t|t-1}^i\})$) become more accessible and are overweighed in judgments. As we will show, this implies that diagnostic expectations entail overreaction to news relative to the Bayesian benchmark.¹⁷

The key feature of Equation (8) is the kernel of truth property – the idea that belief distortions are due to mis-reaction to rational news. This idea has been shown to unify well-known laboratory biases in probability assessments such as base rate neglect, the conjunction fallacy, and the disjunction fallacy (Gennaioli and Shleifer 2010). It has also been used to explain real world phenomena such as stereotyping (BCGS 2016), self-confidence (BCGS 2019), and expectation formation in financial markets (BGS 2018, BGLS 2019). The kernel of truth disciplines the model because it implies that belief updating should depend on objective features of the data. Here we assess whether this same structure can shed light on errors in forecasting macroeconomic variables. In fact, linking belief distortions to properties of the series such as persistence and volatility yields a rich set of testable predictions, which we explore in Section 5.

Equation (8) entails an intuitive characterization of beliefs (all proofs are in Appendix A).

¹⁷ Diagnostic expectations are a theory of overreaction and thus require $\theta > 0$. Equation (8) can be also used as a parsimonious general formalization of distorted beliefs, including underreaction to news for $\theta \in [-1, 0)$.

Proposition 1 *The distorted density $f^\theta(x_t|S_t^i)$ is normal. For $\rho > 0$ and in the steady state, it is characterized by a constant variance $\frac{\Sigma\sigma_\epsilon^2}{\Sigma+\sigma_\epsilon^2}$ and by a time varying mean $x_{t|t}^{i,\theta}$, where:*

$$x_{t|t}^{i,\theta} = x_{t|t-1}^i + (1 + \theta) \frac{\Sigma}{\Sigma + \sigma_\epsilon^2} (s_t^i - x_{t|t-1}^i), \quad (9)$$

$$\Sigma = \frac{-(1 - \rho^2)\sigma_\epsilon^2 + \sigma_u^2 + \sqrt{[(1 - \rho^2)\sigma_\epsilon^2 - \sigma_u^2]^2 + 4\sigma_\epsilon^2\sigma_u^2}}{2}. \quad (10)$$

In equations (9) and (10), $x_{t|t-1}^i$ refers to the rational forecast of the hidden state implied by the Kalman filter. Diagnostic beliefs resemble rational beliefs. They have the same conditional variance Σ , and their mean $x_{t|t}^{i,\theta}$ updates past rational beliefs $x_{t|t-1}^i$ with “rational news” $s_t^i - x_{t|t-1}^i$, to an extent that increases in the signal to noise ratio Σ/σ_ϵ^2 . However, relative to the Bayesian benchmark, diagnostic expectations overreact to news, i.e. $\theta > 0$ in Equation (9), because future states that are more likely given news $s_t^i - x_{t|t-1}^i$ become more accessible and are overweighed. The presence of the rational expectation in (9) captures the fact that beliefs are formed using the entire memory database upon which statistically optimal beliefs are also based, as indicated in Equations (7) and (8).

The kernel of truth logic here works as follows. Positive news are objectively associated with improvement, but representativeness leads to excessive focus on the right tail, generating excessive optimism, and vice versa for negative news. Because rational news $(s_t^i - x_{t|t-1}^i)$ are zero on average, expectations display: i) excess volatility but no average bias, and ii) systematic reversals to rationality.

The consensus diagnostic forecast of x_{t+h} at time t is given by:

$$x_{t+h|t}^\theta = \int x_{t+h|t}^{i,\theta} di = \rho^h \int x_{t|t}^{i,\theta} di,$$

so that the diagnostic forecast error and revision are respectively given by $x_{t+h} - x_{t+h|t}^\theta$ and $x_{t+h|t}^\theta - x_{t+h|t-1}^\theta$. We can now examine the model’s predictions for the Coibion-Gorodnichenko type regressions. Throughout, we assume beliefs are in steady state and the number of forecasters I is large.

Proposition 2 For $\rho > 0$, under the steady state diagnostic Kalman filter, the estimated coefficients of regression (2) at the consensus and individual level, β_C and β_I , are given by:

$$\beta_C = \frac{\text{cov}(x_{t+h} - x_{t+h|t}^\theta, x_{t+h|t}^\theta - x_{t+h|t-1}^\theta)}{\text{var}(x_{t+h|t}^\theta - x_{t+h|t-1}^\theta)} = (\sigma_\epsilon^2 - \theta\Sigma)g(\sigma_\epsilon^2, \Sigma, \rho, \theta) \quad (11)$$

$$\beta_I = \frac{\text{cov}(x_{t+h} - x_{t+h|t}^{i,\theta}, x_{t+h|t}^{i,\theta} - x_{t+h|t-1}^{i,\theta})}{\text{var}(x_{t+h|t}^{i,\theta} - x_{t+h|t-1}^{i,\theta})} = -\frac{\theta(1+\theta)}{(1+\theta)^2 + \theta^2\rho^2} \quad (12)$$

where $g(\sigma_\epsilon^2, \Sigma, \rho, \theta) > 0$ is a function of parameters. Thus, for $\theta \in (0, \sigma_\epsilon^2/\Sigma)$ the diagnostic Kalman filter entails a positive consensus coefficient $\beta_C > 0$, and a negative individual coefficient $\beta_I < 0$.

For $\theta > 0$, overreaction of individual forecasters to their own information relative to the Bayesian benchmark implies negative predictability of forecast errors and thus a negative coefficient $\beta_I < 0$.¹⁸ At the same time, forecasters do not react at all to the information received by others (which they do not observe). This effect can create rigidity in the consensus forecast, provided representative types are not too overweighed relative to the dispersion of signals, $\theta < \sigma_\epsilon^2/\Sigma$. In this case, the diagnostic filter entails rigidity in consensus beliefs and a positive consensus coefficient. For such intermediate θ , the model thus reconciles the empirical patterns in Section 3. Intuitively, even if each forecaster revises his own beliefs too much relative to what is prescribed by Bayes law, $\theta > 0$, if information is sufficiently noisy that each diagnostic agent discounts his own signal, then consensus forecasts exhibit rigidity.

Noisy Rational Expectations ($\theta = 0$) can generate the rigidity of consensus forecasts, $\beta_C > 0$, but not overreaction of individual forecasters, $\beta_I < 0$. Because forecasters optimally use their information, their forecast error is uncorrelated with their own forecast revision. As is evident from Equation (11), when $\theta = 0$ there is no individual level predictability, contrary to the evidence of Section 3.

Finally, Proposition 2 also illustrates the cross-sectional implications of the kernel of truth: the predictability of forecast errors depends on the true parameters characterizing the data generating process $(\sigma_\epsilon^2, \Sigma, \rho, \theta)$. In particular, stronger persistence ρ reduces individual overreaction, in the sense that it

¹⁸ Overreaction here is driven by overweighting of representative types, and is distinct from a mechanical departure of the Bayesian balance between type I and type II errors (i.e. underreaction to fundamentals versus overreaction to noise), which would be akin to overconfidence.

pushes the individual level coefficient β_I in Equation (12) toward zero. Intuitively, rational forecast revisions for a very persistent series are large, which reduces the extent of revision variance that is due to overreaction and thus the predictability of errors. In Section 5 we check this prediction in the data.

The qualitative properties of Proposition 2 continue to hold if forecasters have heterogeneous diagnostic distortions θ . Equation (12) characterizes the forecast error-on-revision regression coefficient for individual forecasters, as in Figure 1. With heterogeneity in θ , the estimated coefficients vary across forecasters (as observed in the data), so the pooled regression coefficient in Equation (2) captures a weighted average of the forecaster-by-forecaster regression coefficients. As discussed in Section 3, this coefficient can be biased upwards, and is negative only if sufficiently many forecasters overreact. Finally, with heterogeneous θ 's, the consensus coefficients in Equation (11) can be interpreted as depending on a suitably weighted average of individual θ s. In this respect, the consensus coefficient is informative about an average bias in the population (see the proof of Proposition 2 for details).

We conclude this theoretical analysis by considering the possibility, relevant in many real world settings, that forecasters also observe public signals. We focus on contemporaneous information (in Lemma A.1 we allow forecasters to observe lagged hidden states). In financial markets, for instance, asset prices themselves supply high frequency, costless public signals that aggregate individual beliefs about future outcomes (though they also contain other shocks such as demand for liquidity). For macro variables as well, noisy public information can come from news releases. To see how public signals affect our analysis, suppose that each forecaster observes, in addition to the private signal s_t^i , a public signal $s_t = x_t + v_t$, where v_t is i.i.d. normal with variance σ_v^2 . The diagnostic estimate now uses both the private and the public signal according to their informativeness. We obtain the following result:

Corollary 1 *Suppose that $\theta \in (0, \sigma_\epsilon^2/\Sigma)$. Then, increasing the precision $1/\sigma_v^2$ of the public signal while holding constant the total precision $(1/\sigma_\epsilon^2 + 1/\sigma_v^2)$ of the private and the public signals: i) leaves the individual coefficient β_I unchanged, and ii) lowers the consensus coefficient β_C .*

When a higher share of information comes from a public signal, the information of different forecasters is more correlated, so individual forecasts incorporate more of the available information. The

consensus forecast then exhibits less rigidity, or possibly even overreaction. This may explain why in financial variables such as interest rates we detect less consensus rigidity than in most other series: market prices act as public signals that correlate to a significant extent the information sets of different forecasters.

In this setting we can compare diagnostic expectations to overconfidence, typically modeled as overweighting of private signals relative to public ones (Daniel, Hirshleifer, and Subrahmanyam 1998).¹⁹ By inflating the signal to noise ratio of private information, overconfidence creates overreaction to private signals and underreaction to public ones. As such, it cannot deliver the results of Corollary 1. More generally, under diagnostic expectations, the Kalman gain of both private and public information is multiplied by $(1 + \theta)$ and so the reaction to information is not bounded by 1 (see Equation 8). A Kalman gain larger than one, which is equivalent to consensus level overreaction, is needed to account for the evidence on consensus forecasts of Federal Government Spending that we document here, and for the evidence on consensus forecasts of the long term earnings growth of individual firms that we document in BGLS (2019). Our structural estimation exercise in Appendix F finds additional evidence that Kalman gains above 1 help account for several series.

4.2 Back to the Data: Alternative Hypotheses and the Kernel of Truth

We can now go back to the estimates in Table 3. In our model, a positive θ is needed to explain the estimates for the 14 out of 22 series that display negative individual level CG coefficients. This means that 12 out of the 18 economic variables we consider point to $\theta > 0$. These include key macro variables such as Nominal GDP, CPI, Private Consumption, Industrial Production, long term interest rates, but also a predictor of systematic macro reversals, namely the BAA spread (Lopez-Salido, Stein and Zakrajsek 2017). Looking only at consensus forecasts for these variables would not uncover this finding. The evidence for 3 out of 18 variables, including the GDP deflator and the investment series, is consistent with noisy information, namely $\theta = 0$ in our setup. Finally, the data for the remaining 3 variables,

¹⁹ Diagnostic expectations also describe beliefs where overconfidence can be ruled out (e.g., when all information is public, in experiments on base rate neglect or social stereotypes).

unemployment and the short term interest rates, exhibit underreaction at the individual level (we include unemployment here even though the median forecaster appears to overreact).

What can we make of these results? First, rational expectations are rejected by the data. Second, the majority of series point to overreaction $\theta > 0$, and consensus forecasts are always more rigid than individual ones, in line with the model. At the same time, there is a lot of variation in the extent of rigidity and overreaction in the data, and some patterns cannot be accounted for by diagnostic expectations, such as individual level underreaction to news in short term interest rates, which requires $\theta < 0$.

Before moving to the structural analysis, we assess whether broad patterns in the data are consistent with the kernel of truth property embedded in diagnostic expectations, particular in comparison to the standard backward-looking model of adaptive expectations. Several tests along these lines are reported in Appendix E; here we offer a verbal synthesis.

Under diagnostic expectations, more persistent series should exhibit more correlated revisions at different horizons. That is, for series that are more persistent, revisions for $t + 2$ should be more positively correlated with revisions for $t + 3$. This prediction is strongly supported by the data (Appendix E Figure E1). Forecasters update in a forward looking way in the sense that forecasts take the variable's true persistence into account, even if they overreact to news. This finding is at odds with adaptive expectations, which specify that agents form expectations using a distributed lag of past realizations with fixed weights, so that updating at any horizon is unrelated to the true features of the process. More generally, this finding is inconsistent with the idea that forecasters hold misspecified models that are not responsive to objective news, in line with the Lucas (1976) critique.

Another testable implication of the kernel of truth is that belief updating should also respond to other information that helps predict future outcomes. To examine this prediction, we depart from the assumption of AR(1) processes of Equation (5). Specifically, suppose that a series follows an AR(2) process characterized by short term momentum and long term reversals:

$$x_{t+3} = \rho_2 x_{t+2} + \rho_1 x_{t+1} + u_{t+3}, \quad (13)$$

where $\rho_2 > 0$ and $\rho_1 < 0$. In this case, which we examine in Appendix E.2, diagnostic expectations entail an exaggeration of both short-term momentum and of long-term reversals.

Formally, diagnostic expectations about the AR(2) process (13) yield two predictions. First, as in the rational benchmark, an upward revision about $t + 2$ entails an upward revision about $t + 3$, while an upward revision about $t + 1$ entails a downward revision about $t + 3$. Second, and contrary to the rational benchmark, these revisions predict future errors due to overreaction. Thus, upward revisions about $t + 2$ lead to excess optimism about $t + 3$ (an exaggeration of short-term momentum), but upward revisions about $t + 1$ lead to excess pessimism about $t + 3$ (an exaggeration of reversal).

To test these predictions, we first assess which series are better described by AR(2) rather than by AR(1), so that ρ_1 is significantly negative and entails a better fit under the Bayesian Information Criterion (Appendix E Table E1). Consistent with Fuster, Laibson and Mendel (2010), we find that several macroeconomic variables exhibit hump-shaped dynamics with short-term momentum and longer-term reversals.²⁰ We then show that the two predictions of diagnostic expectations hold in the data. First, for the vast majority of these series, the forecast error about $t + 3$ is negatively predicted by revisions about $t + 2$ but positively predicted by revisions about $t + 1$. This behavior is consistent with the kernel of truth, but not with more mechanical models, such as adaptive and natural expectations (Fuster, Laibson and Mendel (2010)) in which forecasters neglect long-term reversals. Second, and importantly, separating short term persistence from long term reversals clarifies the patterns of reaction to information. We now find evidence of overreaction even for unemployment and short term rates, which displayed underreaction under the AR(1) specification.

In sum, the kernel of truth property holds predictive power. Diagnostic expectations capture forward looking departures from rationality in a way that helps account for the data.

5. Reaction to Information across Series

²⁰ We do not aim to find the unconstrained optimal ARMA(k,q) specification, which is notoriously difficult. We only wish to capture the simplest longer lags and see whether expectations react to them as predicted by the model.

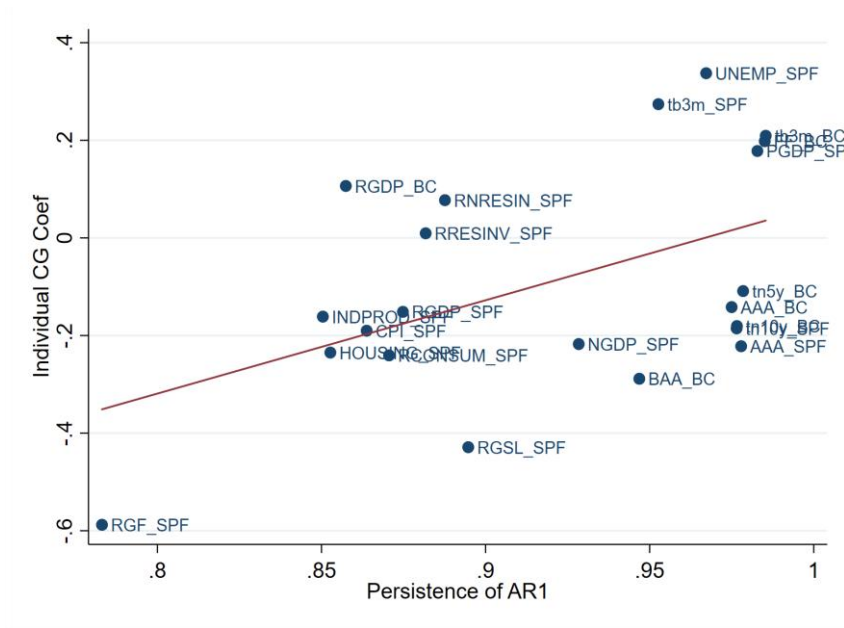
In this Section, we assess the ability of our model to account for the different degrees of overreaction observed in individual forecasts of different economic series, and for the relative rigidity of consensus forecasts. To see how the kernel of truth can shed light on these patterns, consider Proposition 2. Equation (12) predicts that the individual level CG coefficients should depend on the persistence ρ of the economic variable and on the diagnosticity parameter θ . Similarly, Equation (11) predicts that the consensus coefficients for a variable should depend on the same persistence parameter ρ , on diagnosticity θ , but also on the noise to signal ratio σ_ϵ/σ_u .

Because these predictions invoke non-directly observable parameters such as diagnosticity θ and noise σ_ϵ/σ_u , in this Section we recover the parameters from data using structural estimation techniques. First, however, we look at the raw data, which can be done for individual level CG coefficients. Equation (12) offers in fact a straightforward prediction: for a given θ , these coefficients should be less negative for more persistent series. To test this prediction, we run an AR(1) specification of actuals for each series and estimate a series specific persistence parameter ρ . In Figure 2, Panel A plots the correlation between the baseline pooled individual level CG coefficients from Table 3 and ρ . Panel B displays the same plot but for median forecaster-by-forecaster CG coefficients from Table 3. Consistent with our model, the CG coefficient rises with persistence. For the pooled coefficient, the correlation is about 0.49, and statistically different from 0 with a p -value of 0.02. For the median individual level coefficient, the correlation is 0.37, with p -value of 0.08.

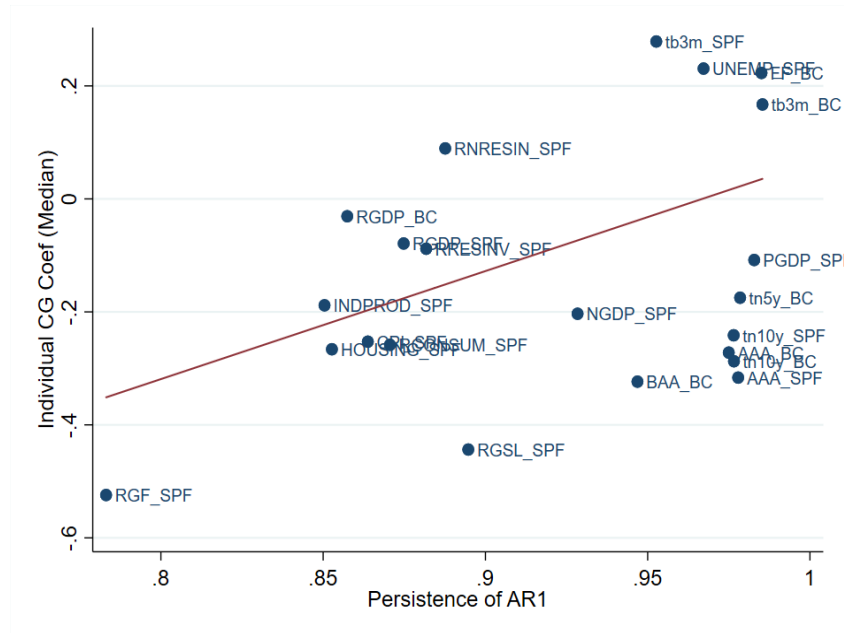
Figure 2. Individual CG Coefficients and Persistence of Actual Series

Plots of individual level CG regression (forecast error on forecast revision) coefficients in the y-axis, against the persistence of the actual process in the x-axis.

Panel A. Pooled Estimates



Panel B. Forecaster-by-Forecaster Estimates



With these encouraging results, we proceed to systematically investigate the predictive power of the model with structural estimation, using the simulated method of moments. We prefer this method to maximum likelihood for two reasons. First, one advantage of our model is that it is simple and transparent. However, this simplicity comes at the cost of likely misspecification and it is well known that with

misspecification concerns moment estimators are often more reliable.²¹ Second, fundamental shocks can be fat tailed, and estimating a non-normal model by maximum likelihood is problematic because the likelihood function cannot be written in closed form. Numerical approximations methods must be used, and these may introduce additional noise in parameter estimates.²² Our estimation exercise can be viewed as useful first step in assessing the ability of our model to account for the variation in expectations errors.

We develop three estimation methods. In Method 1, we match series-specific parameters $(\theta, \sigma_\varepsilon/\sigma_u)$ by fitting, for each series, the variance of forecast errors and forecast revisions. These are natural moments to target. First, they can be measured directly from the data. Second, they are linked to the parameters of interest. By the law of total variance, the variance of forecast errors $\sigma_{FE,k}^2$ is the sum of i) the average cross-sectional variance of errors, and ii) the variance over time of consensus errors. The first term is informative about the measurement noise $\sigma_{\varepsilon,k}$, while the latter is informative about the overreaction parameter θ_k . A similar logic holds for the total variance of forecast revisions. In a rational model with $\theta = 0$, large cross-sectional dispersion of forecasts is symptomatic of large noise $\sigma_{\varepsilon,k}$, which would imply more cautious consensus revisions. A positive θ would instead help reconcile large cross-sectional dispersion in forecasts with large consensus revisions.²³

Because this method does not use CG coefficients in the estimation, it allows us to assess how the model replicates both the consensus and individual regression results in Table 3. Positive estimates of θ help reconcile negative individual with positive consensus CG coefficients. Moreover, variation in θ across series tells us how much extra overreaction we need to fit the data, given our assumptions about the data generating process and the signal structure.

In Methods 2 and 3 (Sections 5.2 and 5.3), we estimate θ by directly fitting individual level coefficients to the model prediction (Equation 12). This pins our estimates of θ more tightly to the model.

²¹ See for instance Jesus Fernandez-Villaverde's Lecture notes on macroeconomic dynamics, in particular Lecture 4 on Bayesian Inference.

²² With the particle filter, numerically computing the marginal likelihood is challenging because the implied latent signals must be backed out from the observed forecast data. To do so, the particle filter must be applied for a grid of possible latent signals to match the observed forecast. This has to be applied at every observation for every individual and every series. Errors introduced in this procedure propagate to the estimate of implied signals over (panel) time.

²³ In contrast, matching average forecast errors and revisions would not be informative about θ_k and $\sigma_{\varepsilon,k}$, as these sample moments are close to zero in our data (consistently with diagnostic but also rational expectations).

We can then estimate the noise to signal ratio σ_ϵ/σ_u by fitting the variance of forecast revisions, which allows us to focus on variations for each forecaster over time (in comparison, the variance of forecast errors is more affected by fixed cross-sectional differences across individuals and as such is less reliable). Method 2 again allows θ to vary across series. Here, model performance is assessed by the ability to fit the consensus CG coefficient alone. Method 3 instead restricts θ to be the same for all series. This exercise allows to assess the model's explanatory power for the variation of both individual and consensus CG coefficients in terms of fundamental parameters $(\rho_{1,k}, \sigma_{u,k}, \sigma_{\epsilon,k})$.

All three estimation methods build on the following procedure. Each series k is described as an AR(1), using the fitted fundamental parameters $(\rho_{1,k}, \sigma_{u,k})$ (Appendix F Table F1). Next, for each series x_t^k of actuals and parameter values $(\theta_k, \sigma_{\epsilon,k})$, we simulate time series of signals $s_t^{i,k} = x_t^k + \epsilon_t^{i,k}$ where $\epsilon_t^{i,k}$ is drawn from $N(0, \sigma_{\epsilon,k}^2)$ i.i.d. across time and forecasters. We then use $(\theta_k, \sigma_{\epsilon,k})$ and $s_t^{i,k}$ to generate diagnostic expectations, using Equation (9). We generate diagnostic expectations for each forecaster in the sample, by using the realizations x_t^k over the exact period in which the forecaster makes predictions for series k (we drop forecasters with fewer than ten observations as before). We use these expectations to compute the relevant moments in each method, and search through a parameter grid to minimize the relevant loss function as described below.

To assess how the model matches the empirical CG regression coefficients, model-predicted coefficients are computed as follows. For each series, the estimated $(\theta, \sigma_\epsilon)$ and the actual process parameters are used to generate model-based forecasts for each forecaster during the time period where the forecaster participates in the panel. We then run CG regressions using these model-based forecasts, and compare the results with the empirical CG coefficients in Table 3.

In this estimation exercise, we abstract away from forecaster heterogeneity in θ . Although for many forecasters we may not have enough data to obtain precise estimates of their individual θ , Appendix F performs a tentative analysis of the heterogeneous forecaster case following Method 2. We return to this in Section 6.

5.1 Parameter Estimates

In Method 1, for each series k we search for the parameter values $(\theta_k, \sigma_{\epsilon,k})$ that best match the variance of the forecast errors, $\sigma_{FE,k}^2 = \text{var}_{i,t}(FE_{k,t}^i)$, and the variance of forecast revisions, $\sigma_{FR,k}^2 = \text{var}_{i,t}(FR_{k,t}^i)$, computed across time and forecasters. For values $(\theta, \sigma_{\epsilon})$, denote the model-implied moments by $\widehat{\sigma_{FE,k}^2}(\theta, \sigma_{\epsilon})$ and $\widehat{\sigma_{FR,k}^2}(\theta, \sigma_{\epsilon})$. We search through a grid of parameters for values that minimize the distance $\left(\sigma_{FE,k}^2 - \widehat{\sigma_{FE,k}^2}(\theta, \sigma_{\epsilon})\right)^2 + \left(\sigma_{FR,k}^2 - \widehat{\sigma_{FR,k}^2}(\theta, \sigma_{\epsilon})\right)^2$. The grid imposes the model-based constraint $\theta \geq 0$. Next, we evaluate the empirical covariance of the two moments at the first stage parameters $(\theta_{k,FS}^*, \sigma_{\epsilon,k,FS}^*)$ and invert it to obtain the optimal weight matrix W . Finally, we compute the second stage estimate that minimizes the quadratic form

$$\left(\sigma_{FE,k}^2 - \widehat{\sigma_{FE,k}^2}(\theta, \sigma_{\epsilon}), \sigma_{FR,k}^2 - \widehat{\sigma_{FR,k}^2}(\theta, \sigma_{\epsilon})\right)^T W \left(\sigma_{FE,k}^2 - \widehat{\sigma_{FE,k}^2}(\theta, \sigma_{\epsilon}), \sigma_{FR,k}^2 - \widehat{\sigma_{FR,k}^2}(\theta, \sigma_{\epsilon})\right)$$

To obtain confidence intervals for our estimates, we bootstrap from the panel of forecasters with replacement.

In Method 2, we fit θ_k by inverting the individual CG coefficient in Equation (12) for each series k . We allow for negative values because we are interested in assessing the extent to which Methods 1 and 2 offer comparable results for the variation in θ across series. Using this fitted value of θ_k , we then estimate $\sigma_{\epsilon,k}$ by fitting the variance of forecast revisions, that is by minimizing the distance $\left(\sigma_{FR,k}^2 - \widehat{\sigma_{FR,k}^2}(\theta, \sigma_{\epsilon})\right)^2$. In Method 3 we estimate the model by restricting θ to be the same for all series. For each value θ , we estimate each series' noise $\sigma_{\epsilon,k}$ by matching the variance of forecast revisions, and then calculate the individual CG coefficient for each variable. We find pick θ that minimizes the sum of mean squared deviations between individual CG in the data and in the model (equal weighted across variables).

The estimation results for methods 1 and 2 are summarized in Table 4. Here we describe the main results. In Method 1, we estimate significantly positive θ s for all series, ranging from 0.3 to 1.5 with an

average of 0.59, and with tight confidence intervals.²⁴ It might seem surprising that we find $\theta > 0$ also for series such as unemployment and short-term interest rates for which the individual CG coefficients are positive, indicating underreaction. Recall, however, that in Method 1 we do not use these individual CG coefficients as inputs in the estimation. Positive θ in this estimation is consistent with cross sectional heterogeneity in revisions coexisting with aggressive revisions in the consensus. In Method 2, by construction, the value of θ is positive for the 15 series that have negative individual CG regression coefficients, and is negative for the remaining ones. The average θ is 0.42, which is close to the previous average estimate. The correlation between the values of θ in Method 1 and 2 is 0.42 with p -value 0.00 (which increases to 0.88 if we exclude the RGF series, which is an outlier in Method 2), and the rank correlation is 0.87. Thus, the two methods yield comparable answers regarding the levels and variation in θ needed to make sense of the data.

Finally, under Method 3, the loss function reaches a tight minimum at $\theta = 0.5$, in line with the average values obtained with the other Methods. In sum, model estimation strengthens the finding of overreaction. We report multiple sensitivity checks for this analysis in Appendix F to confirm our main findings.²⁵

The estimates for θ are on average somewhat smaller, but in line with BGS (2018), who obtain $\theta = 0.9$ for expectations data on credit spreads, and with BGLS (2019) who also obtain $\theta = 0.9$ for expectations data on firm level earnings' growth. To give a sense of the magnitude, a $\theta \approx 0.5$ means that forecasters' reaction to news is roughly 50% larger than the rational expectations benchmark. This fact alone suggests that the resulting distortions in beliefs can have sizeable economic consequences. In fact, BGLS (2019) find that $\theta = 0.9$ can account for the observed 12% annual return spread between stocks whose long-term earnings growth analysts are pessimistic about and stocks they are optimistic about. Bordalo, Gennaioli, Shleifer, and Terry (2019) find that an RBC model with a θ in the range of 0.5 – 1

²⁴ For Method 1, both moments depend on both parameters, θ and σ_ϵ , under the AR(1) assumption. Numerically, one can vary the parameters to test the sensitivity of the two moments. It turns out that the relative sensitivity of the two moments to the two parameters varies across the different series, so it is hard to draw a general lesson.

²⁵ We highlight here three robustness tests. First, we allow series to be described as AR(2) processes and obtain similar results as here. This is reassuring given the well-known difficulty of finding the proper AR(k) specification. Second, we allow for fundamental shocks to be drawn from fat tailed distributions, which requires implementing the numerical particle filter method. Again, our results remain stable. Finally, we perform the analysis at the level of individual forecasters, and again obtain similar results for the median forecaster.

generates large boom-bust cycles in credit spreads, leverage and aggregate investment. We return to the implications of belief distortions of this magnitude in Section 6.

Table 4. SMM Estimates of θ (Methods 1 and 2)

This table shows the estimates of θ and the 95% confidence interval using 300 bootstrap samples (bootstrapping forecasters with replacement). Results for each series are estimated using the AR(1) version of the diagnostic expectations model based on the properties of the actuals according to Appendix F Table F1. In Method 2, we first estimate θ using the individual CG regression coefficient in the data (pooled estimates as in Table 3) and the formula in Equation (12).

	Method 1		Method 2	
	θ	95% CI	θ	95% CI
Nominal GDP (SPF)	0.53	(0.42, 0.60)	0.29	(0.18, 0.43)
Real GDP (SPF)	0.60	(0.56, 0.60)	0.18	(0.08, 0.31)
Real GDP (BC)	0.34	(0.25, 0.42)	-0.10	(-0.16, -0.03)
GDP Price Index Inflation (SPF)	0.55	(0.42, 0.60)	-0.15	(-0.22, -0.08)
CPI (SPF)	0.49	(0.35, 0.71)	0.25	(0.11, 0.40)
Real Consumption (SPF)	0.98	(0.80, 1.36)	0.34	(0.19, 0.53)
Industrial Production (SPF)	0.57	(0.44, 0.71)	0.20	(0.09, 0.35)
Real Non-Residential Investment (SPF)	0.36	(0.25, 0.49)	-0.07	(-0.14, 0.02)
Real Residential Investment (SPF)	0.37	(0.25, 0.53)	-0.01	(-0.11, 0.10)
Real Federal Government Consumption (SPF)	0.90	(0.62, 1.32)	5.46	(-3.38, 27.85)
Real State & Local Government Consumption (SPF)	1.37	(0.80, 2.31)	1.11	(0.74, 1.63)
Housing Start (SPF)	0.69	(0.53, 0.84)	0.32	(0.17, 0.53)
Unemployment (SPF)	0.30	(0.30, 0.30)	-0.28	(-0.35, -0.21)
Fed Funds Rate (BC)	0.30	(0.30, 0.30)	-0.17	(-0.21, -0.13)
3M Treasury Rate (SPF)	0.40	(0.35, 0.46)	-0.23	(-0.27, -0.18)
3M Treasury Rate (BC)	0.30	(0.28, 0.30)	-0.18	(-0.22, -0.14)
5Y Treasury Rate (BC)	0.45	(0.39, 0.49)	0.13	(0.08, 0.18)
10Y Treasury Rate (SPF)	0.49	(0.41, 0.59)	0.25	(0.16, 0.34)
10Y Treasury Rate (BC)	0.49	(0.41, 0.53)	0.23	(0.15, 0.30)
AAA Corporate Bond Rate (SPF)	0.70	(0.56, 0.82)	0.32	(0.21, 0.45)
AAA Corporate Bond Rate (BC)	0.93	(0.79, 1.06)	0.17	(0.11, 0.24)
BAA Corporate Bond Rate (BC)	0.70	(0.53, 0.79)	0.47	(0.33, 0.63)

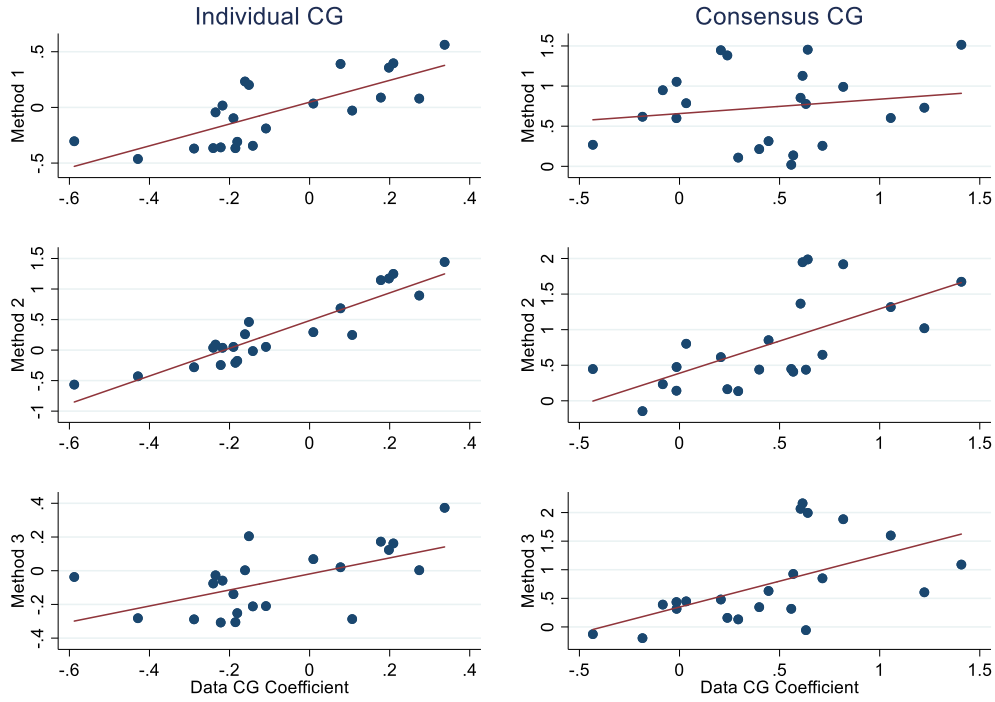
Finally, we turn to the estimates of noise σ_ϵ , which we normalize by the standard deviation of shocks σ_u . Tables F2 and F8 in Appendix F report the results. Consistent with rigidity of consensus forecasts, individual noise is larger than fundamental innovations, with the average estimated σ_ϵ/σ_u ranging from 1.30 to 1.74 across methods. In the next section we assess the model's performance by examining whether our estimates of parameters θ and σ_ϵ can account for differences in individual and consensus CG coefficients across series.

5.2 Model Performance

To assess the performance of the model, we examine how the model matches the empirical CG regression coefficients.²⁶ As discussed above, for each series use the estimated $(\theta, \sigma_\epsilon)$ to generate model based CG regressions at the individual and consensus levels, and compare the results with the empirical CG coefficients in Table 3. Figure 3 plots the individual CG coefficients (left column) and the consensus CG coefficients (right column) from each of the estimated models against those from the survey data.

Figure 3. Individual and Consensus CG Coefficients using Estimated θ and σ_ϵ

The figure plots individual CG coefficients (left column) and consensus CG coefficients (right column) in the y-axis, and CG coefficients in the data in the x-axis. Results for each series are estimated using Method 1 (row 1), Method 2 (row 2) and Method 3 (row 3) of the diagnostic expectations model based on the properties of the actuals according to Appendix F Table F1.



In Method 1, for individual CG coefficients, the correlation between the empirical estimates and the model predictions is high, about 0.76 (p -value of 0.00). In levels, the individual CG coefficients

²⁶ In Appendix F, we show that the model offers a satisfactory fit of the target moments across series under each method. In Method 1, the average absolute log difference between the variance of forecast errors in the data ($\sigma_{FE,k}^2$) and in the simulated model ($\widehat{\sigma_{FE,k}^2}(\theta, \sigma_\epsilon)$) is 0.05, and that for the variance of forecast revision is 0.06 (Table F3). For Method 2 and Method 3, the variance of forecast revision is the only target moment, and the average absolute log difference between the data and model moments is 0.56 and 0.09 respectively (Tables F9 and F12).

implied by the model tend to be more positive than those in the data. Even so, given its parsimony, the model does an impressive job capturing cross-sectional differences. For consensus CG coefficients, we also find a positive correlation of 0.18 (p -value of 0.44) between the model and the data. This lower correlation likely reflects, at least in part, the fact that consensus coefficients are highly dependent on the magnitude of measurement noise $\sigma_{\epsilon,k}$, which is in turn estimated with some imprecision.

We next examine Method 2. By construction, the method accounts well for individual level CG coefficients, with a correlation between coefficients in the model and in the data of 0.92 (p -value 0.00).²⁷ It is more interesting to assess performance relative to consensus CG coefficients. Consistent with the fact that estimates of $\sigma_{\epsilon,k}$ are tighter with Method 2, we get a better fit of consensus CG than with Method 1, with correlation 0.65 (p -value .001). Still, Figure 3 shows that Methods 1 and 2 deliver similar messages in terms of matching the cross section of consensus CG coefficients.

Finally, we examine Method 3, which restricts θ to be the same for all series. As discussed above, this exercise helps us assess how much variation in the data can be captured by the variation in the “physical” parameters alone. The model accounts for 33% of the variation in individual CG coefficients (the correlation is 0.58, p -value 0.01). Differences in persistence thus help explain the magnitudes of individual overreaction, but the lion’s share is accounted for by other factors, such as the variation in θ . The model also accounts for 32% of the variation in consensus CG coefficients (correlation 0.56, p -value 0.01). The variation in noise and persistence account for a good portion of variation in consensus rigidity, in line with the predictions of the model.

Overall, the three estimation methods provide a robust and coherent picture that i) individual overreaction is prevalent, ii) the model captures variation in both individual and consensus CG coefficients as a function of fundamental parameters, and iii) allowing θ to vary across series improves model performance. In Appendix F, we examine several variations on these specifications, including allowing the series to be described as AR(2) processes, considering median individual level forecasts, and allowing for non-normal shocks. The results are very similar.

²⁷ This match is not entirely mechanical, because model-predicted coefficients are obtained by running a simulation under the estimated model.

6. Taking Stock

We summarize and interpret our main findings, discuss some open issues, and conclude.

6.1 Determinants of CG Coefficients

We consider the extent to which differences across economic variables in persistence ρ , noise to signal ratio σ_ϵ/σ_u , diagnosticity parameter θ , and the availability of public signals (Corollary 1) can explain the variation in CG coefficients.

Persistence ρ . Figure 2 shows that, as predicted by the model, individual CG coefficients are more negative for less persistent series. Less persistent series such as government consumption, private consumption, or housing starts display clear overreaction, while very persistent series such as unemployment or short-term interest rates display less overreaction or even underreaction at the individual level. Model estimates with Method 3, in which θ is kept constant, indicate that persistence alone accounts for 33% of the cross-sectional variation in individual CG coefficients. Since allowing θ to vary accounts for roughly 57% of such variation with Methods 1, and 85% in Method 2, differences in persistence account for between 39% and 58% of the model's explanatory power in this dimension.²⁸

Noise σ_ϵ/σ_u . Noise in individual signals reconciles individual level overreaction with consensus rigidity. Noisier information means that individual forecasts neglect a larger share of the average signal, making the consensus more rigid. Dispersed information and individual noise appear to play a significant role in the data, both because the dispersion of forecasts is large and because at the consensus level the prevalent pattern is informational rigidity.²⁹

Using Method 3, allowing variation only in persistence and in noise to signal ratio, our model accounts for 32% of variation in consensus CG coefficients. As one allows θ to vary in Method 2, the explained variation rises to 42%. In particular, variation in the “physical” parameters ρ and σ_ϵ/σ_u accounts for two-thirds of the model's explanatory power with respect to consensus CG coefficients.

Diagnosticity θ . The average level of θ in any estimation method is close to 0.5, the tightly identified point estimate when θ is constrained to be the same across series (Method 3). With Methods 1

²⁸ It is harder to quantify the role of persistence for the consensus forecasts because in Equation (11) the consensus CG coefficient is a highly nonlinear, non-monotonic, function of ρ .

²⁹ The exception is federal government consumption, which displays statistically significant overreaction at the consensus level. This series is characterized by low persistence and low noise, as predicted by the model.

and 2, θ displays some variation which helps account for the data. Variation in θ is more important to capture individual than consensus CG coefficients, consistent with the model. What may this variation in θ capture? On the one hand, θ may capture specific factors that are outside the simple specification used in the estimation. On the other hand, variation in θ may correspond to actual variation in the tendency to overreact to news. We briefly comment on both mechanisms.

Variation in θ may in principle capture misspecification of the data generating process for actuals. We explore this possibility using the AR(2) specification of Appendix E. The formula for individual CG coefficients would differ from Equation (12) no longer applies, and we estimate the model under Method 1. Allowing for AR(2) dynamics does not sensibly alter our structural estimates, indicating that our ability to account for the cross section is robust to misspecification. Recall that empirically, as described in Section 4.2, this specification generates diagnostic overreaction in both unemployment and short term interest rates, but it does not reduce variation in estimated θ .

Variation in θ may also proxy for features of the information structure that may shape overreaction, particularly at the consensus level, such as public signals. In particular, the fact that θ is higher for financial series than for macroeconomic ones is consistent with the observation that the latter display more consensus rigidity. Also consistent with this view, in financial markets asset prices act as public signals to which all agents can simultaneously overreact, as in Corollary 1. In goods markets, information is likely more dispersed, increasing consensus rigidity. In this respect, incorporating noisy public signals may help improve the explanatory power of the model.

On the other hand, the results may capture real variation in the tendency to overreact to information, driven perhaps by the extent to which judgments rely on intuition versus models and deliberation. Consistent with this hypothesis, individual forecasters' estimated θ s are correlated across series. Within forecaster variation in θ , in the cross-section of series, may in turn depend on the decision maker's incentives and effort. Forecasts of key indicators such as GDP, unemployment, or inflation may have lower estimated θ s because forecasters spend more effort on them, producing forecasts that make better use of the available information. We leave a systematic assessment of this hypothesis to future work.

6.2 Open Issues

Our results contribute to the growing literature on non-rational expectations, and help account for some potentially conflicting evidence, especially on consensus versus individual expectations. Yet many issues remain open. Here we discuss three: evidence for overreaction in consensus forecasts, evidence for underreaction in individual forecasts, and the mapping between expectations and market outcomes.

Our model reconciles the evidence of rigidity of consensus forecasts, as documented by CG (2015) and Table 3, with individual forecasters' overreaction to news. Importantly, it can also reconcile the apparent rigidity of consensus forecasts for some variables with their overreaction for others, such as government spending. As we already discussed, consensus overreaction has also been found in other data, such as BGLS (2019) finding strong overreaction of consensus forecasts of long-term (3-5 years) corporate earnings growth of listed firms in the U.S. In our model, if news are dispersed (σ_ϵ is large), then aggregating beliefs entails consensus rigidity. If in contrast fundamental volatility σ_u is high relative to dispersed information, or if there are public signals that aggregate news (e.g., in financial series), then the consensus forecast is more likely to overreact. The properties of consensus forecasts reflect the balance between these two forces and vary in predictable ways across variables. Consensus overreaction is itself a distinctive sign of diagnostic expectations.

But the central prediction of our model is overreaction at the level of individual forecasters. This is largely confirmed in our data (Table 3), but also in recent experimental research (Landier, Ma, Thesmar 2019). However, we also find individual underreaction for short-term interest rates in Table 3. In earlier work, Bouchaud et al. (2019) document predominant individual level underreaction in short term (12 months ahead) earnings forecasts for U.S. listed firms. We do not yet have a way to unify under- and overreaction at the individual level, but the evidence suggests that the term structure of expectations may play a role. In our Tables 3 and 4, individual underreaction prevails with respect to short term interest rates, while overreaction prevails with respect to long term interest rates. The same pattern arises in the case of earnings forecasts: in Bouchaud et al. (2019), individual underreaction occurs for short term forecasts, while in BGLS (2019) overreaction occurs for long term forecasts.

Is this term structure consistent with diagnostic expectations? Preliminary analysis suggests that the answer may be yes. In the case of interest rates, we showed that the greater overreaction of forecasts for long term outcomes is consistent with the kernel of truth logic. Long term interest rates are less

persistent than short term ones, which implies that overreaction should be stronger for the former, consistent with the evidence. A similar mechanism may be at play with respect to short versus long term corporate earnings. Furthermore, D'Arienzo (2019) shows in the context of interest rates that another mechanism is at play: long-term outcomes display a higher fundamental uncertainty σ_u than short term outcomes. Beliefs may overreact more aggressively for long term outcomes because it is easier to entertain the possibility of more extreme outcomes (since news reduce uncertainty less for outcomes in the far future). This mechanism is not in our current model but, as D'Arienzo (2019) shows, it follows naturally from the logic of diagnostic expectations. Using this mechanism, he is able to account for a large chunk of the excess volatility of long-term rates relative to short term ones documented by Giglio and Kelly (2017). In sum, although we do not have full unification and a force for individual underreaction may need to be added, the kernel of truth logic presents a promising mechanism for unifying departures from rational expectations.

Finally, consider the evidence of rigidity versus overreaction of beliefs in the context of market outcomes. In macroeconomics, several papers stress the importance of consensus rigidity to account for the apparent slow response to shocks of macro aggregates such as consumption and inflation (e.g., Sims 2003, Mankiw and Reis 2002). Other work, predominantly in finance, invokes overreaction to information to account for excess volatility in stock prices (Shiller 1981, BGLS 2019) and long term interest rates (Giglio and Kelly 2017, D'Arienzo 2019), and for predictable reversals in stock returns (De Bondt and Thaler 1990, BGLS 2019). Part of the differences in these market outcomes may be accounted for by the comparative statics stressed in our analysis. For instance, financial assets may exhibit stronger overreaction because their valuations depend on distant future cash flows, which display low persistence, and because prices serve as public signals. In contrast, key macroeconomic outcomes may display more consensus rigidity because they depend on more persistent factors and because public signals are weaker.

The response of market outcomes to news also depends on the market process that translates beliefs into prices and quantities. Properties of consensus forecasts need not be the same as properties of aggregate outcomes. For instance, if individuals can leverage and returns are not strongly diminishing, then individual forecasts matter more for market outcomes (Buraschi, Piatti, and Whelan 2018). This may contribute to overreaction in financial markets. In contrast, if market outcomes depend more symmetrically on many

individual choices, for example in determining aggregate inflation, then the consensus forecast and its rigidity may be a better guide to expectations shaping market outcomes. Yet even in this case, with sustained news all individuals may react in the same direction leading to aggregate overreaction. This consideration opens intriguing directions to assess the relevance of overreaction or rigidity of beliefs in macroeconomic models starting from micro-founded belief updating.

6.3. Conclusion

Using data from the Blue Chip Survey and from the Survey of Professional Forecasters, we study how professional forecasters react to news building on the methodology of Coibion and Gorodnichenko (2015). We find that while information rigidity prevails for the consensus forecast, as previously shown by CG (2015), for individual forecasters the prevalent pattern is overreaction, in the sense of upward forecast revisions generating forecasts that are too high relative to actual realizations. These results are robust to many possible confounds. We then apply a psychologically founded model of belief formation, diagnostic expectations, to these data, and show that it can reconcile these seemingly contradictory patterns, but also make several new predictions for the patterns of expectation errors across different series. The extent of individual overreaction, captured by the diagnostic parameter, is sizable. According to our estimates in this and other papers, the rational response to news is inflated by a factor between 0.5 and 1. We view this as a starting estimate for macroeconomic quantification exercises, such as Bordalo, Gennaioli, Shleifer, and Terry (2019).

For the purpose of applied analysis, then, the question becomes: what are the macroeconomic consequences of diagnostic expectations? At first glance, one might think that what matters for aggregate outcomes is consensus expectations, so rigidity is enough. This view misses two key points.

First, macroeconomics has advanced over the last several decades by starting with micro parameters estimated from micro data. The micro parameter θ estimated here and in related work lies between .5 and 1, and points to substantial overreaction by individual forecasters. As with other parameters, macroeconomic models grounded in micro estimates should then start with overreaction in

expectations. This may be especially important for heterogeneous agent models with non-linearities and leverage, which stress the relevance of the micro units as opposed to the representative agent.

Second, there are reasons to doubt that consensus beliefs are always characterized by rigidity. First, for some important long term outcomes the consensus may overreact. This has been documented for long term earnings (BGLS 2019), and may be generally true for beliefs and hence prices of distant cash flows (Giglio and Kelly 2017, D’Arienzo 2019). Such long term movements may be key for asset prices and investment. Second, if information diffuses slowly, the reaction to a shock may see a gradual buildup of individual overreactions, taking some time to show as overreaction in the consensus forecasts or in aggregate outcomes.³⁰ Analogously to short-run momentum and long-run reversals in the stock market, there can be investment cycles with slow accumulation of capital but ultimate excess capacity. More work is needed to assess whether such “delayed overreaction” can be detected in the data. Third, and critically, at certain junctures news may be correlated across agents, for instance if major innovations are introduced, or if repeated news in the same direction provide highly informative evidence of large changes. In these cases, which resemble our analysis of public signals, aggregate overreaction is likely to prevail.

Evidence symptomatic of aggregate overreaction has appeared in research on credit cycles. Buoyant credit markets and extreme optimism about firms’ performance predict slowdowns in investment and GDP growth, disappointing realized bond returns and disappointing returns in bank stocks (Greenwood and Hanson 2013, Lopez-Salido, Stein and Zakrajsek 2017, Gulen, Ion, and Rossi 2018, Baron and Xiong 2016). Whether diagnostic expectations can offer a coherent and micro-founded theory for these and other macroeconomic phenomena is an important question for future work.

³⁰ We have formally proved this point by introducing diagnostic expectations into a Mankiw and Reis (2003) model of information rigidities. The results are available upon request.

References

- Adam, Klaus, Albert Marcet, and Johannes Beutel. "Stock Price Booms and Expected Capital Gains." *American Economic Review* 107, no. 8 (2017): 2352-2408.
- Amromin, Gene, and Steven Sharpe. "From the Horse's Mouth: Economic Conditions and Investor Expectations of Risk and Return." *Management Science* 60, no. 4 (2013): 845-866.
- Augenblick, Ned, and Eben Lazarus. "Restrictions on Asset-Price Movements under Rational Expectations: Theory and Evidence." Working paper (2018).
- Bacchetta, Philippe, Elmar Mertens, and Eric Van Wincoop. "Predictability in Financial Markets: What Do Survey Expectations Tell Us?" *Journal of International Money and Finance* 28, no. 3 (2009): 406-426.
- Baron, Matthew, and Wei Xiong. "Credit Expansion and Neglected Crash Risk." *Quarterly Journal of Economics* 132, no. 2 (2017): 713-764.
- Ben-David, Itzhak, John Graham, and Campbell Harvey. "Managerial Miscalibration." *Quarterly Journal of Economics* 128, no. 4 (2013): 1547-1584.
- Benigno, Pierpaolo, and Anastasios Karatounias. "Overconfidence, Subjective Perception, and Pricing Behavior." *Journal of Economic Behavior and Organization*, Volume 164 (2019), pp. 107.
- Berger, Helge, Michael Ehrmann, and Marcel Fratzscher. "Geography, Skills or Both: What Explains Fed Watchers' Forecast Accuracy of US Monetary Policy?" *Journal of Macroeconomics* 33, no. 3 (2011): 420-437.
- Beshears, John, James Choi, Andreas Fuster, David Laibson, and Brigitte Madrian. "What Goes Up Must Come Down? Experimental Evidence on Intuitive Forecasting." *American Economic Review* 103, no. 3 (2013): 570-574.
- Bordalo, Pedro, Katherine Coffman, Nicola Gennaioli, and Andrei Shleifer. "Stereotypes." *Quarterly Journal of Economics* 131, no. 4 (2016): 1753-1794.
- Bordalo, Pedro, Nicola Gennaioli, Rafael La Porta, and Andrei Shleifer. "Diagnostic Expectations and Stock Returns." *Journal of Finance* 74, no. 6 (2019): 2839-2874.
- Bordalo, Pedro, Nicola Gennaioli, and Andrei Shleifer. "Diagnostic Expectations and Credit Cycles." *Journal of Finance* 73, no. 1 (2018): 199-227.
- Bordalo, Pedro, Nicola Gennaioli, Andrei Shleifer, and Stephen Terry. "Real Credit Cycles." Working paper (2019).
- Bouchaud, Jean-Philippe, Philipp Krueger, Augustin Landier, and David Thesmar. "Sticky Expectations and the Profitability Anomaly." *Journal of Finance* 74, no. 2 (2019): 639-674.
- Broer, Tobias, and Alexandre Kohlhas. "Forecaster (Mis)-Behavior." Working Paper (2018).
- Buraschi, Andrea, Ilaria Piatti, and Paul Whelan. "Rationality and Subjective Bond Risk Premia." Working paper (2018).
- Capistrán, Carlos, and Allan Timmermann. "Disagreement and Biases in Inflation Expectations." *Journal of Money, Credit and Banking* 41, no. 2-3 (2009): 365-396.
- Carroll, Christopher. "Macroeconomic Expectations of Households and Professional Forecasters." *Quarterly Journal of Economics* 118, no. 1 (2003): 269-298.

- Cieslak, Anna. "Short-Rate Expectations and Unexpected Returns in Treasury Bonds," *Review of Financial Studies* 31 no.9 (2018): 3265 – 3306.
- Coibion, Olivier, and Yuriy Gorodnichenko. "What Can Survey Forecasts Tell Us about Information Rigidities?" *Journal of Political Economy* 120, no. 1 (2012): 116-159.
- Coibion, Olivier, and Yuriy Gorodnichenko. "Information Rigidity and the Expectations Formation Process: A Simple Framework and New Facts." *American Economic Review* 105, no. 8 (2015): 2644-2678.
- Daniel, Kent, David Hirshleifer, and Avanidhar Subrahmanyam. "Investor Psychology and Security Market Under- and Overreactions." *Journal of Finance* 53, no. 6 (1998):1839-1885.
- D'Arienzo, Daniele. "Excess Volatility with Increasing Over-reaction." University of Bocconi Mimeo, 2019.
- De Bondt, Werner, and Richard Thaler. "Do Security Analysts Over-react?" *American Economic Review* 80, no.2 (1990): 52-57.
- Doucet, Arnaud, Nando de Freitas, Neil Gordon (Eds.) *Sequential Monte Carlo Methods in Practice*. New York: Springer, 2001.
- Frydman, Cary, and Gideon Nave. "Extrapolative Beliefs in Perceptual and Economic Decisions: Evidence of a Common Mechanism." *Management Science* 63, no. 7 (2016): 2340 - 2352.
- Fuhrer, Jeffrey. "Intrinsic Expectations Persistence: Evidence from Professional and Household Survey Expectations." Working Paper (2019).
- Fuster, Andreas, David Laibson, and Brock Mendel. "Natural Expectations and Macroeconomic Fluctuations." *Journal of Economic Perspectives* 24, no. 4 (2010): 67-84.
- Gabaix, Xavier. "A Sparsity-Based Model of Bounded Rationality." *Quarterly Journal of Economics* 129, no. 4 (2014): 1661-1710.
- Gennaioli, Nicola, Yueran Ma, and Andrei Shleifer. "Expectations and Investment." *NBER Macroeconomics Annual* 30, no. 1 (2016): 379-431.
- Gennaioli, Nicola, and Andrei Shleifer. "What Comes to Mind." *Quarterly Journal of Economics* 125, no. 4 (2010): 1399-1433.
- Giglio, Stefano, and Bryan Kelly. "Excess Volatility: Beyond Discount Rates." *Quarterly Journal of Economics* 133, no. 1 (2017): 71-127.
- Greenwood, Robin, and Samuel G. Hanson. "Issuer Quality and Corporate Bond Returns." *Review of Financial Studies* 26, no. 6 (2013): 1483–1525.
- Greenwood, Robin, and Andrei Shleifer. "Expectations of Returns and Expected Returns." *Review of Financial Studies* 27, no. 3 (2014): 714-746.
- Gulen, Huseyin, Mihai Ion, and Stefano Rossi. "Credit Cycles and Corporate Investment." Working Paper (2018).
- Hansen, Lars Peter, and Thomas J. Sargent. *Robustness*. Princeton University Press, 2008.
- Hjalmarsson, Erik. "The Stambaugh Bias in Panel Predictive Regressions." *Finance Research Letters* 5, no. 1 (2008): 47-58.

- Hommel, Cars, Joep Sonnemans, Jan Tuinstra, and Henk Van de Velden. "Coordination of Expectations in Asset Pricing Experiments." *Review of Financial Studies* 18, no. 3 (2004): 955-980.
- Kahneman, Daniel, and Amos Tversky. "Subjective Probability: A Judgment of Representativeness." *Cognitive Psychology* 3, no. 3 (1972): 430-454.
- Kendall, Maurice. "Note on Bias in the Estimation of Autocorrelation." *Biometrika* 41, no. 3-4 (1954): 403-404.
- Kohlhas, Alexandre, and Ansgar Walther. "Asymmetric Attention." Working Paper (2018).
- La Porta, Rafael. "Expectations and the Cross-section of Stock Returns." *Journal of Finance* 51, no. 5 (1996): 1715-1742.
- Landier, Augustin, Yueran Ma, and David Thesmar. "New Experimental Evidence on Expectations Formation." Working Paper (2019).
- Liu, Jun, and Rong Chen. "Sequential Monte Carlo Methods for Dynamic Systems." *Journal of the American Statistical Association* 93, no. 443 (1998): 1032-1044.
- López-Salido, David, Jeremy Stein, and Egon Zakrajšek. "Credit Market Sentiment and the Business Cycle." *Quarterly Journal of Economics* 132, no. 3 (2017): 1373-1426.
- Lucas, Robert. "Econometric Policy Evaluation: A Critique". *Carnegie-Rochester Conference Series on Public Policy* 1 (1976): 19-46.
- Mankiw, N. Gregory, and Ricardo Reis. "Sticky Information versus Sticky Prices: A Proposal to Replace the New Keynesian Phillips Curve." *Quarterly Journal of Economics* 117, no. 4 (2002): 1295-1328.
- Moore, Don, and Paul Healy. "The Trouble with Overconfidence." *Psychological Review* 115, no 2 (2008): 502-517.
- Morris, Stephen, and Hyun Song Shin. "Social Value of Public Information." *American Economic Review* 92, no. 5 (2002): 1521-1534.
- Newey, Whitney, and Kenneth West. "Automatic Lag Selection in Covariance Matrix Estimation." *Review of Economic Studies* 61, no. 4 (1994): 631-653.
- Nickell, Stephen. "Biases in Dynamic Models with Fixed Effects." *Econometrica* (1981): 1417-1426.
- Ottaviani, Marco and Peter Sorensen. "The Strategy of Professional Forecasting." *Journal of Financial Economics* 81, no. 2 (2006): 441 – 466.
- Orlik, Anna and Laura Veldkamp. "Understanding Uncertainty Shocks and the Role of Black Swans." Working Paper (2015).
- Pesaran, M. Hashem, and Martin Weale. "Survey Expectations." *Handbook of Economic Forecasting* (2006): 715-776.
- Shiller, Robert. 1981. "Do Stock Prices Move Too Much to be Justified by Subsequent Changes in Dividends?" *American Economic Review* 71 (3): 421-436.
- Sims, Christopher. "Implications of Rational Inattention." *Journal of Monetary Economics* 50, no. 3 (2003): 665-690.
- Sambaugh, Robert. "Predictive Regressions." *Journal of Financial Economics* 54, no. 3 (1999): 375-421.
- Woodford, Michael. "Imperfect Common Knowledge and the Effects of Monetary Policy." In *Knowledge, Information, and Expectations in Modern Macroeconomics: In Honor of Edmund S. Phelps*, edited by P. Aghion, R. Frydman, J. Stiglitz, and M. Woodford, 25-58 (2003). Princeton: Princeton University Press.