

SHORT COMMUNICATION

On *Speleosiro argasiformis*—a troglobitic Cyphophthalmi (Arachnida: Opiliones: Pettalidae) from Table Mountain, South Africa

Gonzalo Giribet¹, Benjamin L. de Bivort², Anthony Hitchcock³ and Peter Swart⁴: ¹Museum of Comparative Zoology, Department of Organismic and Evolutionary Biology, Harvard University, 26 Oxford Street, Cambridge, Massachusetts 02138, USA. E-mail: ggiribet@g.harvard.edu; ²Rowland Institute at Harvard, 100 Edwin Land Boulevard, Cambridge, Massachusetts 02142, USA; ³Kirstenbosch National Botanical Garden, Cape Town, Western Cape Province, South Africa; ⁴QlikView South Africa, PO Box 310, Rondebosch 7100 South Africa

Abstract. We report the recent collection and observation of large numbers of specimens of the troglobitic harvestman *Speleosiro argasiformis* Lawrence 1931 in the Wynberg Cave system, Table Mountain, South Africa. Specimens were collected and/or photographed in different caves of the system. Live observation showed specimens fleeing bat carcasses when disturbed.

Keywords: Wynberg cave, Gondwana

Cyphophthalmi or mite-harvestmen are mostly known from pristine forests in continental landmasses and islands of continental origin, and some species are known to inhabit cavernicolous environments. Cave cyphophthalmids are not uncommon, with several species described from around the globe (e.g., Juberthie 1971; Rambla and Juberthie 1994; Schwendinger et al. 2004). But only a few of these are true troglobites (also called troglomorphs or troglobiomorphs), possessing morphological adaptations such as lighter pigmentation, reduced eyes, and elongated appendages. Of these true troglobites, most species have small distribution areas and often are the only representatives within their respective families that show such adaptations. This results in a long list of described monotypic genera of cyphophthalmid troglobites, including *Tranteeva* Kratochvíl 1958 (Sironidae; now in *Cyphophthalmus* Joseph 1868), *Shearogoeva* Giribet 2011, and *Marwe* Shear 1985 (of uncertain affinities), *Canga* DaSilva, Pinto-da-Rocha & Giribet 2010 (Neogoveidae, although this species is probably a troglophile or even a troglaxene), a few stylocellids (e.g., *Fangensis* Rambla 1994), and *Speleosiro* Lawrence 1931 (Pettalidae), the latter being the subject of this note.

The first true troglobiomorphic cyphophthalmid described with elongated appendages and large body size was *Speleosiro argasiformis*

Lawrence 1931 from Wynberg Cave in Table Mountain (Western Cape Province, South Africa) (Lawrence 1931). *Speleosiro argasiformis* is the only member of the Gondwanan family Pettalidae that inhabits the dark zone of caves, despite the high diversity of pettalids in New Zealand (Forster 1948, 1952; Boyer and Giribet 2009), Australia (Juberthie 1989; Giribet 2003; Boyer and Reuter 2012), Chile (Shear 1993), and South Africa (Hansen and Sørensen 1904; Lawrence 1931, 1933, 1939, 1963; de Bivort and Giribet 2010). Here we summarize the knowledge on *S. argasiformis*, accompanied with new data and observations on its abundance and behavior in different caves of the Wynberg cave system.

We have studied all known specimens of *S. argasiformis*, including those deposited in museum collections. We also review all the literature citations known to us. In addition, we provide new observations on collections made by the authors during a visit to the Wynberg cave system on 5 November 2011. Additional photographic material was available from prior visits to the caves by A. Hitchcock and P. Swart. Newly acquired specimens are deposited in the Museum of Comparative Zoology, Harvard University, Cambridge, Massachusetts (USA; MCZ IZ-134759-134762). Historical specimens are deposited in the South African Museum, Cape Town, Western Cape Province (South Africa; SAM), or in the Natal Museum, Pietermaritzburg, KwaZulu-Natal (South Africa, NMSA).

- *Speleosiro argasiformis*
- *Paralamyctes* sp.?
- small isopods (1-2mm)

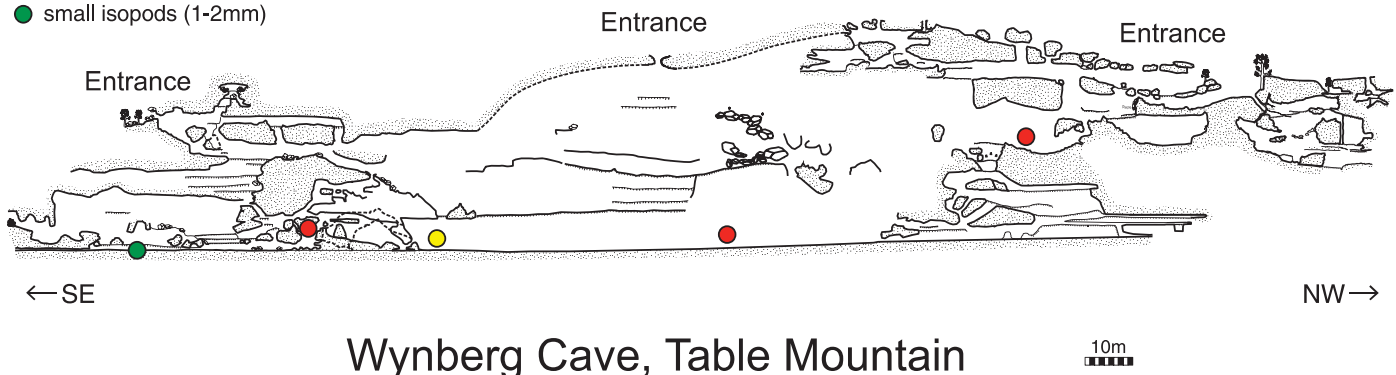


Figure 1.—Profile of the Wynberg Cave system, with localities where *S. argasiformis* was located. Other new arthropod species are indicated.

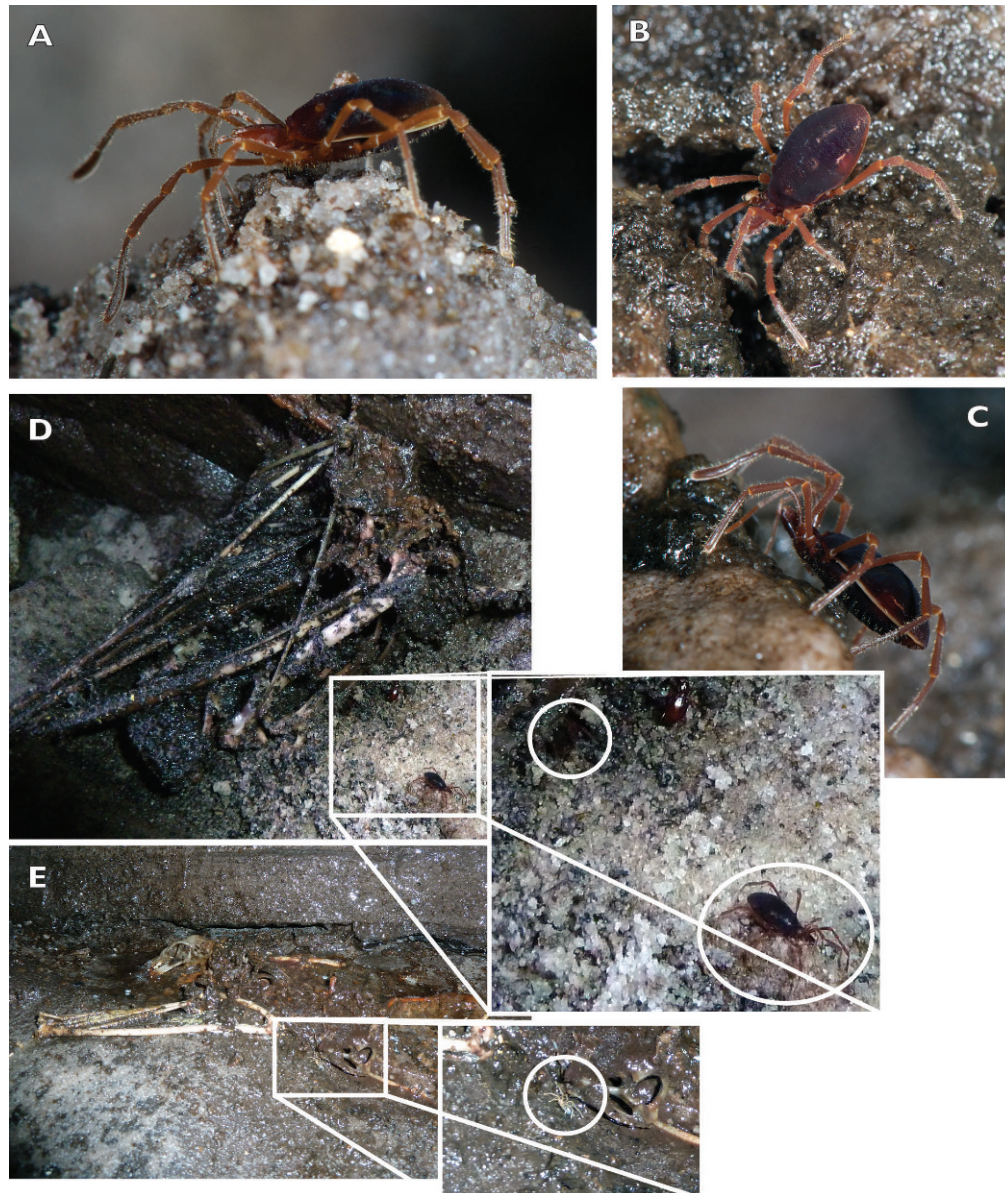


Figure 2.—A. Male adult individual near entrance (right red dot in Fig. 1). B. Adult female near cave entrance. C. Adult female near cave entrance. D. Bat carcass with a fleeing *Speleosiro* specimen and the rear end of another specimen under the carcass visible (see inset). E. A different bat carcass in the bottom of the cave (mid red dot in Fig. 1) with a juvenile specimen fleeing after being disturbed.

Material examined.—*Type material*: SOUTH AFRICA: *Western Cape Province*: holotype female, Wynberg Caves, 1913, K.H. Barnard (SAM B1473).

Other material examined: SOUTH AFRICA: *Western Cape Province*: 1 male, 2 juv., Wynberg Caves (NMSA 7660) (the two subadult females reported as additional material in the original description; the male described on p. 503) (see below); 1 male, 1 female, Bat's Cave, November 1960, N. Leleup (NMSA); 1 female, Wynberg Caves, 30 July 1988, M. Bing (NMSA 14657); 1 female, Bat's Cave, 1956, University of Cape Town Ecological Survey (SAM C2022); 1 female, Wynberg Caves, under rocks, 25 September 1960 (SAM C2023); 8 specimens, Wynberg Cave, 5 November 2011 (MCZ IZ-134759); 1 male, Wynberg Cave, 5 November 2011 (MCZ IZ-134760); 1 female, Wynberg Cave, 5 November 2011 (MCZ IZ-134761); 2 females, 1 juv., Inukshuk Cave, 5 November 2011 (MCZ IZ-134762). (We differentiate between Wynberg Caves in the old

labels, and Wynberg Cave in the new collections, as the caves system has been mapped recently but the older labels referred to as the entire Wynberg Cave system and it is unclear whether "Wynberg Caves" refers to what it is currently recognized as Wynberg Cave or to any of the other connected caves.)

Geographic and geologic setting.—All specimens have been collected from three caves in the Wynberg Cave system (referred to as "Wynberg Caves" in the older collections): Wynberg Cave, Bat's Cave, and Inukshuk Cave. A physical mapping of the system was undertaken by the South African Speleological Association (Cape Town), with participation from A. Hitchcock and P. Swart. A detailed profile of the system and the location of specimens are provided in Figure 1.

Specimens of *Speleosiro argasiformis* (Fig. 2) have been observed in three caves: Wynberg, Inukshuk, and Bat's Cave. This species is especially abundant in Wynberg Cave, where ca. 25 specimens were

seen in different galleries in all the main levels of the cave (Fig. 1). The largest concentration of individuals occurred in the dark zone near the entrance, at a site where small stones and bat guano accumulated (right red dot in Fig. 1). The second largest aggregation occurred on a decaying bat's carcass, covered in guano (Fig. 2D), where we saw three specimens fleeing the carcass after being exposed to light. Another specimen was also observed under a second bat carcass (Fig. 2E). We also noticed several individuals walking about the cave's floor or lower part of the walls, or under medium-sized stones (stones larger than 5 cm in diameter), always in the dark, humid zone of the cave. Associated troglotic fauna included other Opiliones (*Speleomontia cavernicola* Lawrence 1931), and the rare Neopilionidae *Vibone vetusta* Kauri 1961, several species of spiders, pseudoscorpions, isopods (Crustacea: Malacostraca: Isopoda), an undescribed centipede in the genus *Paralamyctes* (Chilopoda: Lithobiomorpha: Henicopidae), and the troglitic camel cricket *Speleiacris tabulae* (Orthoptera: Rhaphidophoridae). Perhaps the most spectacular is the blind albino velvet worm *Peripatopsis alba* Lawrence 1931. Most of these species are considered to be endangered or critically endangered, as is the case with *P. alba* (Hamer et al. 1997; Sharratt et al. 2000).

Speleosiro argasiformis is poorly known from museum collections and has been considered a "rare species." Referring to the type specimens of this species, Lawrence (1931:350–351) states:

"These 3 specimens were found in the Wynberg Cave of Table Mountain, one by Dr. K. H. Barnard in 1913 [specimen SAM B 1473], the other two by myself in May 1929. [These are the two subadult females from lot NMSA 7660; the male was later described in p. 503.] The cave occurs at the top of the mountain in the Table Mountain sandstone; the entrance to the caves is tortuous and narrow, and the main body of it where the specimens were found is about 100 feet below the surface, the possibility of any light reaching it being thus precluded; the walls of the main cave are damp and slimy from the water which constantly percolates through fissures in the rocks; the specimens were found under small stones on very damp or even wet sand. The only vegetation seems to consist of a small lichen and the fauna is sparse, the chief representative being the peculiar Acridiid Orthopteron *Speleiacris tabulae*; another peculiar animal inhabiting the cave is a blind and unpigmented Peripatus, *Peripatopsis alba*. Outside at the mouth of the cave were found specimens of *Purcellia illustrans* in the usual habitat."

Juberthie (1970, 1971) provided further details and an accurate redescription of *S. argasiformis*, expanded by de Bivort & Giribet (2010), but no new material was reported by any of these authors. Sharratt et al. (2000) studied the cave fauna of the Cape Peninsula and reported 14 specimens of *S. argasiformis* (misspelled as *S. argasiformes*). These authors proposed that *S. argasiformis*, along with most of the other endemic cavernicoles, be considered Endangered under IUCN Red List Categories, due to their limited distributions. The estimated abundances for Wynberg and Bats' Caves were 0.494 ± 0.63 individuals/m² (0.282 for Wynberg and 0.707 for Bats' Cave).

One of the arguments provided by Sharratt et al. (2000) for the conservation status of *S. argasiformis* is its phylogenetic uniqueness, for being the only member of its genus. Morphological cladistic analyses suggest that *Speleosiro* is related to *Purcellia* (de Bivort et al. 2010; de Bivort and Giribet 2010; Giribet et al. 2012), but do not resolve its exact position with respect to the *Purcellia* species. In fact, Lawrence suggested that *Speleosiro argasiformis* is a troglitic version of the surface species *Purcellia illustrans*. Preliminary molecular data (results not shown) corroborate the monophyly of *Purcellia* + *Speleosiro* (three species of *Purcellia* and *Speleosiro* are

identical for 18S rRNA); however, *Speleosiro* is closer to *P. leleupi* and *P. griswoldi* than to the sympatric species *P. illustrans*, according to cytochrome *c* oxidase subunit I data.

ACKNOWLEDGMENTS

Access and collecting permits were facilitated by Ruth-Mary Fisher, Science Liaison Officer for South African National Parks. C. Conway and A. Ndaba (Natal Museum, Pietermaritzburg, NMSA), and M. Cochrane (South African Museum, Cape Town, SAM) provided access to specimens. Fieldwork was funded by a Putnam Expedition Grant from the Museum of Comparative Zoology. Associate Editor Mark Harvey, Julie Whitman-Zai and two anonymous reviewers provided comments that helped to improve this note.

LITERATURE CITED

- Boyer, S.L. & G. Giribet. 2009. Welcome back New Zealand: Regional biogeography and Gondwanan origin of three endemic genera of mite harvestmen (Arachnida, Opiliones, Cyphophthalmi). *Journal of Biogeography* 36:1084–1099.
- Boyer, S.L. & C.N. Reuter. 2012. New species of mite harvestmen from the Wet Tropics of Queensland, Australia, with commentary on biogeography of the genus *Austropurcellia* (Opiliones: Cyphophthalmi: Pettalidae). *Journal of Arachnology* 40:96–112.
- de Bivort, B., R.M. Clouse & G. Giribet. 2010. A morphometrics-based phylogeny of the temperate Gondwanan mite harvestmen (Opiliones, Cyphophthalmi, Pettalidae). *Journal of Zoological Systematics and Evolutionary Research* 48:294–309.
- de Bivort, B. & G. Giribet. 2010. A systematic revision of the South African Pettalidae (Arachnida: Opiliones: Cyphophthalmi) based on a combined analysis of discrete and continuous morphological characters with the description of seven new species. *Invertebrate Systematics* 24:371–406.
- Forster, R.R. 1948. The sub-order Cyphophthalmi Simon in New Zealand. *Dominion Museum Records in Entomology* 1:79–119.
- Forster, R.R. 1952. Supplement to the sub-order Cyphophthalmi. *Dominion Museum Records in Entomology* 1:179–211.
- Giribet, G. 2003. *Karripurcellia*, a new pettalid genus (Arachnida: Opiliones: Cyphophthalmi) from Western Australia, with a cladistic analysis of the family Pettalidae. *Invertebrate Systematics* 17:387–406.
- Giribet, G., P.P. Sharma, L.R. Benavides, S.L. Boyer, R.M. Clouse, B.L. de Bivort, D. Dimitrov, G.Y. Kawachi, J. Murienne & P.J. Schwendinger. 2012. Evolutionary and biogeographical history of an ancient and global group of arachnids (Arachnida: Opiliones: Cyphophthalmi) with a new taxonomic arrangement. *Biological Journal of the Linnean Society* 105:92–130.
- Hamer, M.L., M.J. Samways & H. Ruhberg. 1997. A review of the Onychophora of South Africa, with discussion of their conservation. *Annals of the Natal Museum* 38:283–312.
- Hansen, H.J. & W. Sørensen. 1904. On two orders of Arachnida: Opiliones, especially the suborder Cyphophthalmi, and Ricinulei, namely the family Cryptostemmatoidae. Cambridge University Press, Cambridge, UK.
- Juberthie, C. 1970. Les genres d'opilions Sironinae (Cyphophthalmes). *Bulletin du Muséum National d'Histoire Naturelle*, 2e série 41: 1371–1390.
- Juberthie, C. 1971. Les opilions cyphophthalmes cavernicoles. Notes sur *Speleosiro argasiformis* Lawrence. *Bulletin du Muséum National d'Histoire Naturelle* 42:864–871.
- Juberthie, C. 1989. *Rakaia daviesae* sp. nov. (Opiliones, Cyphophthalmi, Pettalidae) from Australia. *Memoirs of the Queensland Museum* 27:499–507.
- Juberthie, C. 1991. Sur *Trenteveva paradoxa* (Kratochvil, 1958), opilion troglitic et les opilions cyphophthalmes de Bulgarie. *Mémoires de Biospéologie* 18:263–267.

- Lawrence, R.F. 1931. The harvest-spiders (Opiliones) of South Africa. *Annals of the South African Museum* 29:341–508.
- Lawrence, R.F. 1933. The harvest-spiders (Opiliones) of Natal. *Annals of the Natal Museum* 7:211–241.
- Lawrence, R.F. 1939. A contribution to the opilionid fauna of Natal and Zululand. *Annals of the Natal Museum* 9:225–243.
- Lawrence, R.F. 1963. The Opiliones of the Transvaal. *Annals of the Transvaal Museum* 24:275–304.
- Rambla, M. & C. Juberthie. 1994. Opiliones. Pp. 215–230. *In* Encyclopaedia Biospeologica. (C. Juberthie and V. Decu, eds.). Société de Biospéologie, Moulis-Boucarest.
- Schwendinger, P.J., G. Giribet & H. Steiner. 2004. A remarkable new cave-dwelling *Stylocellus* (Opiliones, Cyphophthalmi) from Peninsular Malaysia, with a discussion on taxonomic characters in the family Stylocellidae. *Journal of Natural History* 38:1421–1435.
- Sharratt, N.J., M.D. Picker & M.J. Samways. 2000. The invertebrate fauna of the sandstone caves of the Cape Peninsula (South Africa): patterns of endemism and conservation priorities. *Biodiversity and Conservation* 9:107–143.
- Shear, W.A. 1993. The genus *Chileogovea* (Opiliones, Cyphophthalmi, Petallidae [sic]). *Journal of Arachnology* 21:73–78.

Manuscript received 3 October 2012, revised 21 June 2013.