

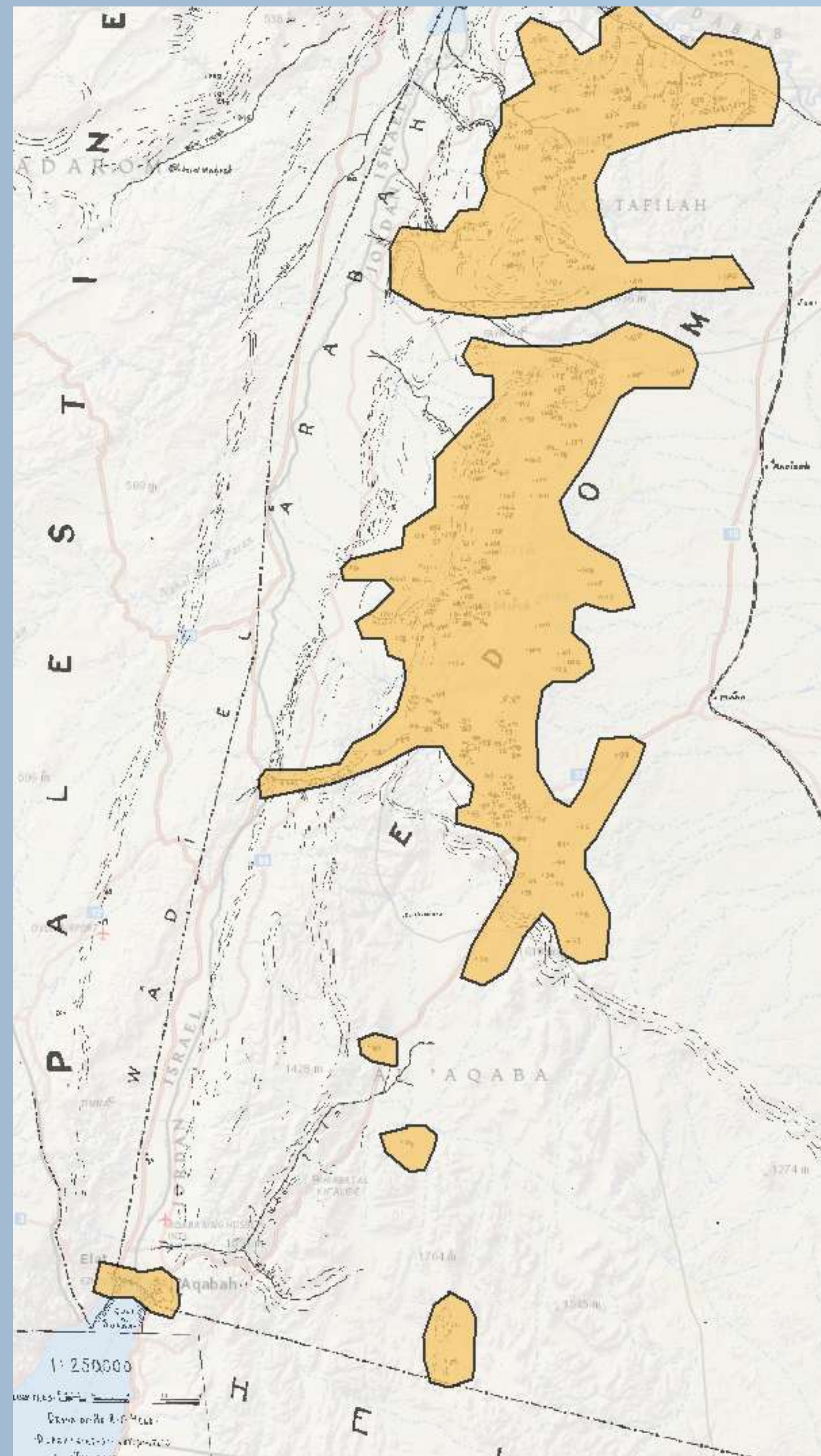


# DESERT CROSSROADS – the ASOR Expeditions in the Transjordan and Palestine lead by Nelson Glueck

Semitic Museum, Harvard University and the ASOR Archives



## Expedition 2 Survey Area



- Exped\_1\_Survey\_Areas
- Exped\_2\_SurveyArea
- Exped\_3\_Survey\_Area
- Exped\_4\_Survey\_Area

<http://worldmap.harvard.edu/maps/glueck>

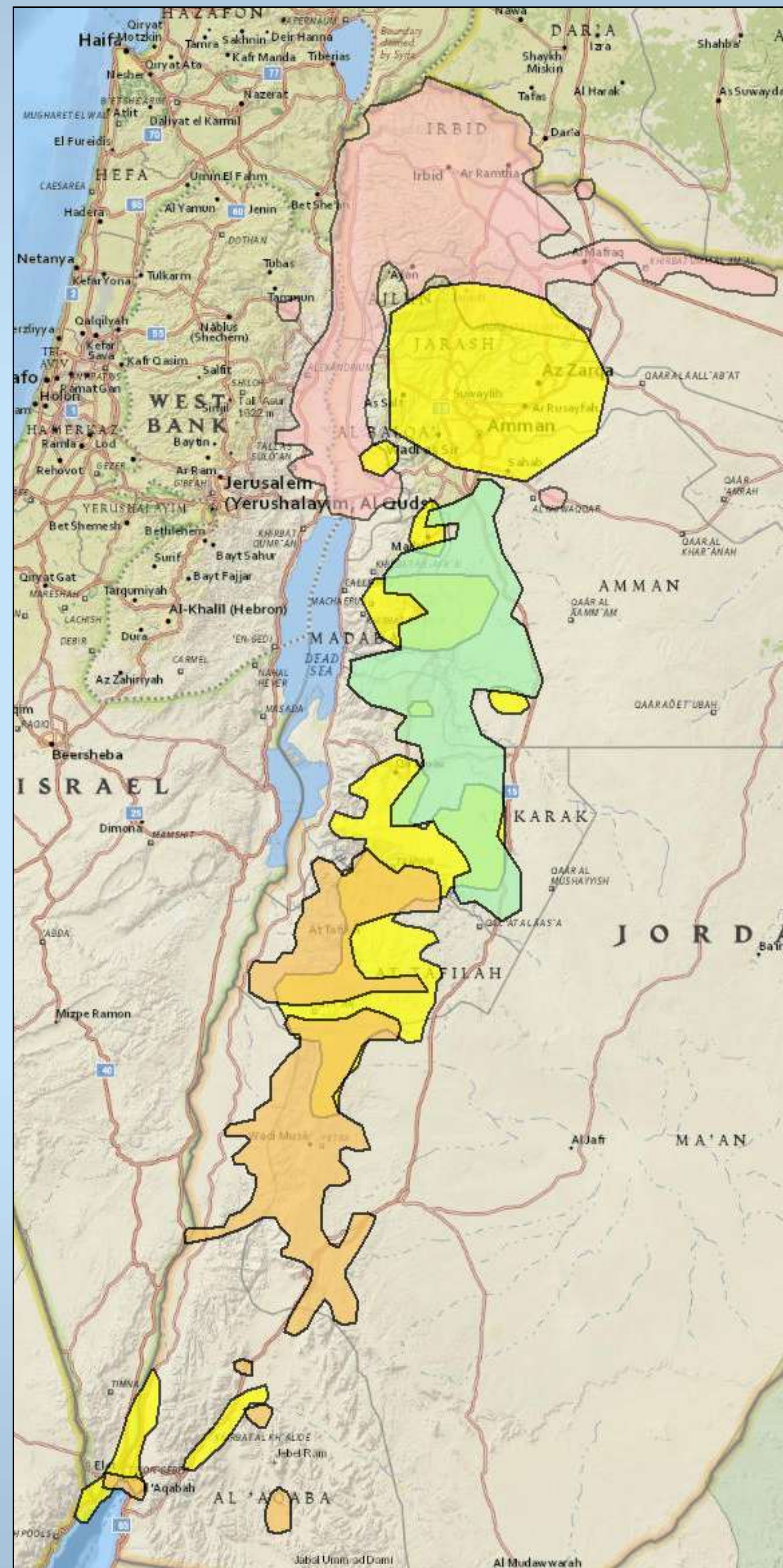
## ASOR Expeditions CHRONOLOGY

- Expedition I - Summer 1933
- Expedition II – Spring & Summer 1934
- Expedition III – Summer 1936 thru Summer 1938
- Expedition IV – 1939-40 and 1942-47

## ACKNOWLEDGEMENTS

Prepared by – Jeff Howry, Semitic Museum  
Harvard University  
(jhowry@fas.harvard.edu)  
Cynthia Rufo-McCormick  
ASOR Archivist  
(arch@asor.org)

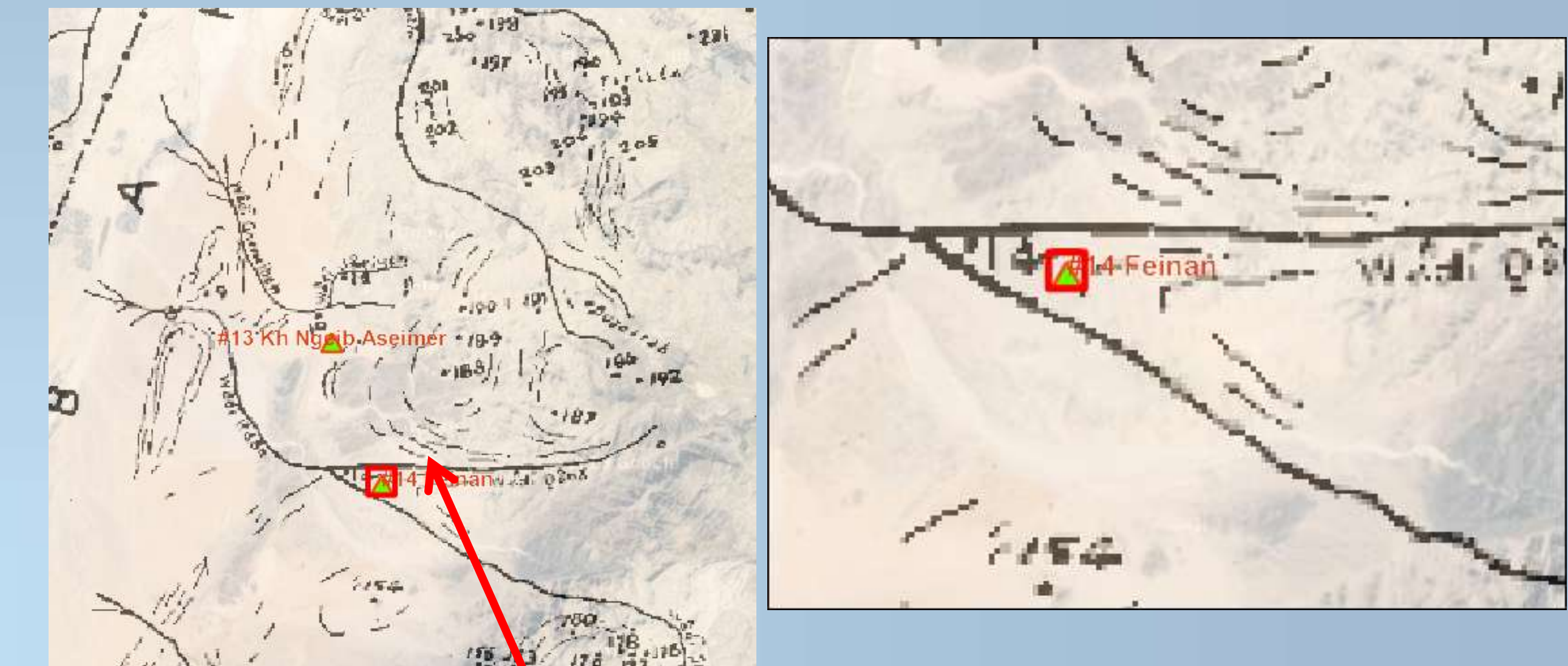
## EXPEDITIONS I – II – III – IV



Four Survey Areas & Survey Maps  
Are available on Worldmap  
<http://worldmap.harvard.edu/maps/glueck>

Thanks to the Harvard Center for Geographic Analysis  
For WorldMap and support of ASOR's projects.

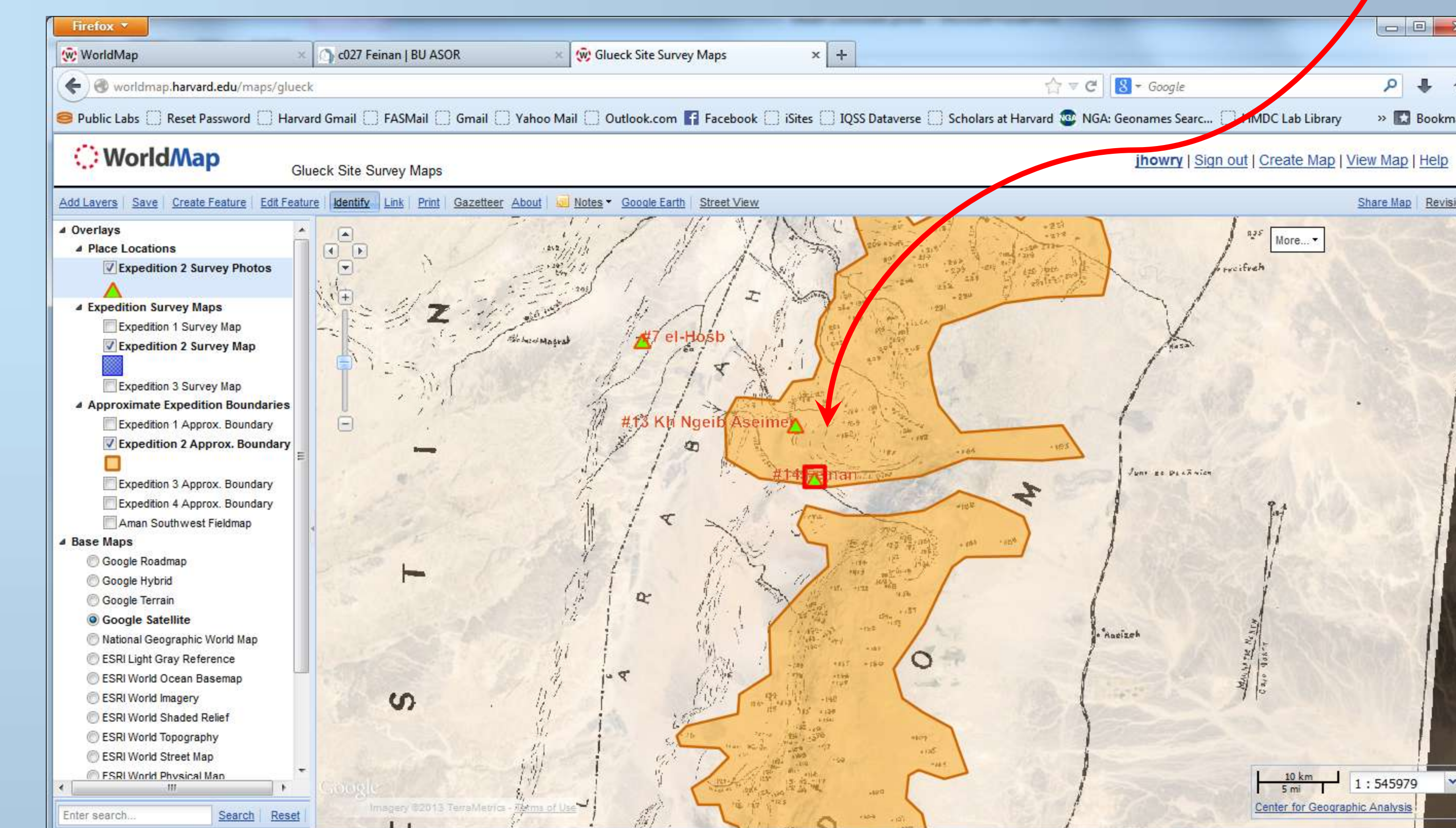
## Feinan



c027 Feinan | BU ASOR

Title: c027 Feinan  
Date: n.d., 1932  
Description: Views of named aqueduct, Byzantine church, roman watch tower and surrounding landscape at Khirbet Feinan, site of Biblical "Punon".  
Phys. Desc: B&W prints.  
Repository: BU ASOR  
Found In: Nelson Glueck Photograph Collection (Compiled by E. Vogl), 1928-1970 → Drawer 1 → Folder 126: Feinan, n.d., 1932 →  
Creators: Glueck, Nelson (1900-1971)  
Subjects: Archaeological sites -- Jordan  
Architecture  
Glueck, Nelson, 1900-1971  
Landscapes  
Local people  
Mountains  
Photographs  
Valleys  
Vogel, Eleanor K. (Eleanor Kuhlmann)  
Publisher: American Schools of Oriental Research  
Rights: Please contact ASOR if you would like to reproduce this image. Images owned by ASOR may not be reproduced without permission.  
This image has been made accessible for purposes of education and research. We have indicated what we know about copyright and due to the nature of archival collections, we are not always able to identify this information. We are eager to hear from any rights owner. Upon request, we will remove material from public view while we address a rights issue.

## WorldMap GIS web platform



Expedition 2 Survey Area & Site Locations



Nelson Glueck and his Guide