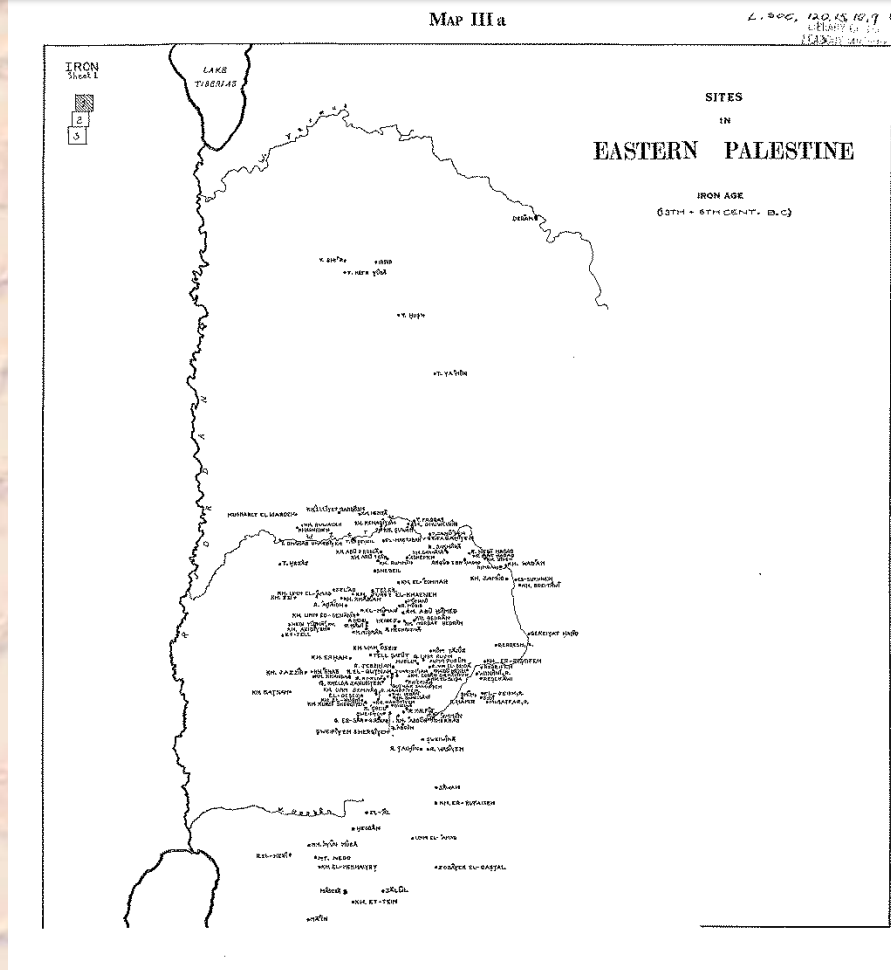
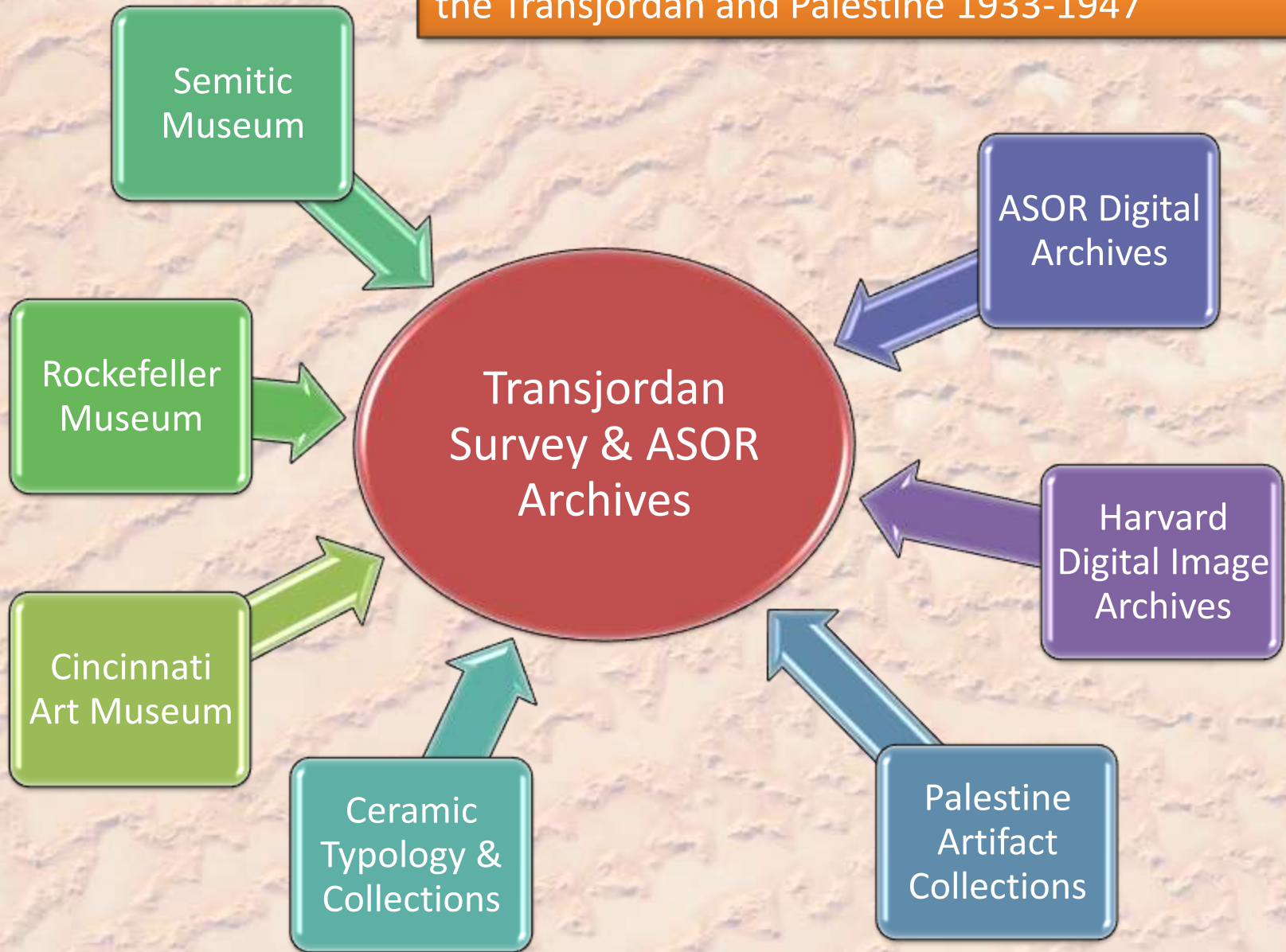


DESERT CROSSROADS

ASOR Surveys of the Transjordan and Palestine 1932-1947
Conducted by Nelson Glueck



DESERT CROSSROADS – Nelson Glueck's Surveys of the Transjordan and Palestine 1933-1947



DESERT CROSSROADS

- Purpose – to provide an online resource for researchers that will enable access to the earliest systematic survey of the ‘Transjordan’.
- Demonstrate how digital archives and online GIS can be integrated to facilitate access to a digital archive.
- Provide a platform for further expanding user access to ASOR’s archives and contemporary research.

ASOR Archives Overview

- 35 collections, dating from 1875-2013
- Formally organized beginning in 2009
- Finding aids for all of the collections are online at www.asor.org/archives/collections.html
- Materials from many collections have been digitized and made available online



DESERT CROSSROADS

Nelson Glueck Collections in the ASOR Archives

- Nelson Glueck Papers, 1932-2005
- Nelson Glueck Photograph Collection, 1928-1970
- Khirbet et -Tannur Excavation Records, 1937-2004
- Tell el Kheleifeh Excavation Records, 1938-1985

The majority of the materials pertaining to Nelson Glueck have been digitized and made available online.

<http://www.asor.org/archives/index.html>



DESERT CROSSROADS – the current project

- Glueck in the online archive
 - Diaries
 - Expedition Photographs
- Expedition Maps
 - Hand annotated
 - Published maps – online at worldmap.harvard.edu/maps/glueck
- Georeferenced Site Locations
- Search by Site Name on WorldMap
- Access digital archive imagery and text
- Provide commentary on archived survey



DESERT CROSSROADS – N. Glueck Overview

- Glueck Background – Cincinnati, Germany & Jerusalem (arrived 1927)
- ASOR – the Jerusalem School
- Wm. Albright ASOR Director, Jerusalem – resigned 1935 leaving Glueck the directorship
- Edom and the lands east of the Jordan River – south to Aqaba and north to Syrian border
- Periods of the four Expeditions 1933- 1947
- Survey Techniques & Site naming/numbering
- Survey Publications - ASOR Bulletins

Field Methods

Expedition I - Summer 1933

Expedition II – Spring & Summer 1934

**Expedition III – Summer 1936 thru
Summer 1938**

Expedition IV – 1939-40 and 1942-47

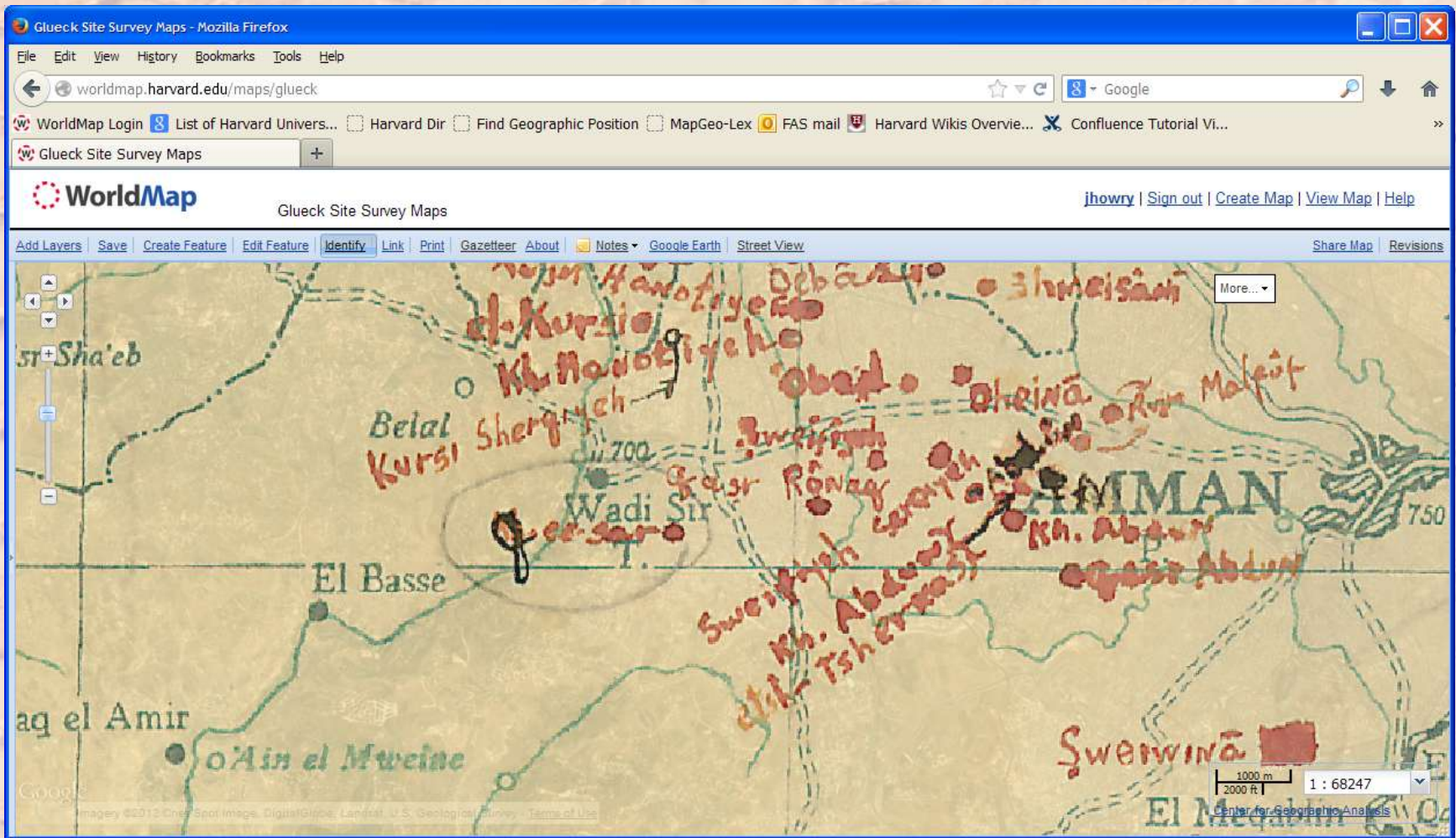
Glueck's field methods included interviewing the Bedouin tribes who occupied the areas where he was surveying. He made a point of 'getting permission' to be there through the customary means of introduction and hospitality.



The site is this way.....

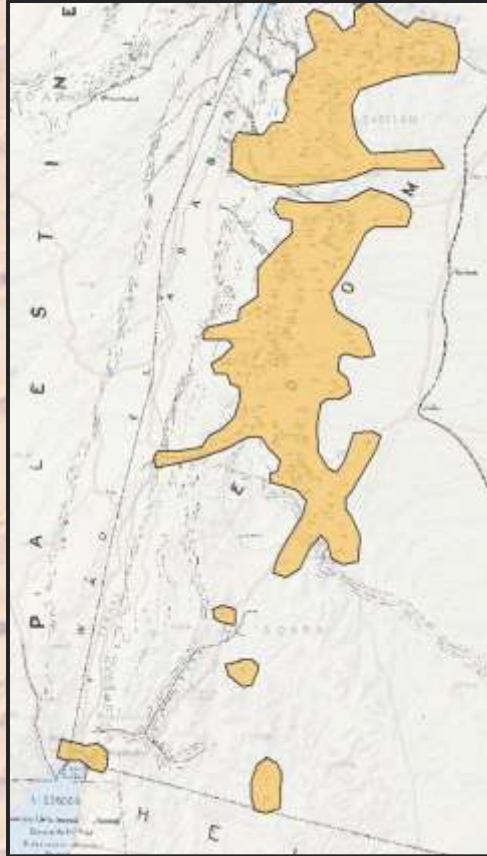


Glueck's Field Map – Expedition 3, Amman section



<http://worldmap.harvard.edu/maps/glueck/INI>

Expedition 2



Each of the hand drawn survey maps from the ASOR publications were scanned and georeferenced on WorldMap.

The areas where the surveyed sites were clustered formed the boundaries of the survey areas which were used to create a 'boundary layer' which was exported to WorldMap.

The georeferenced maps and the survey boundaries were exported to WorldMap.

SEE OUR POSTER

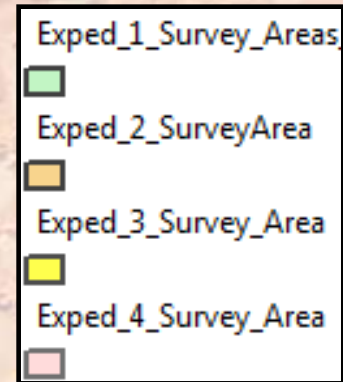
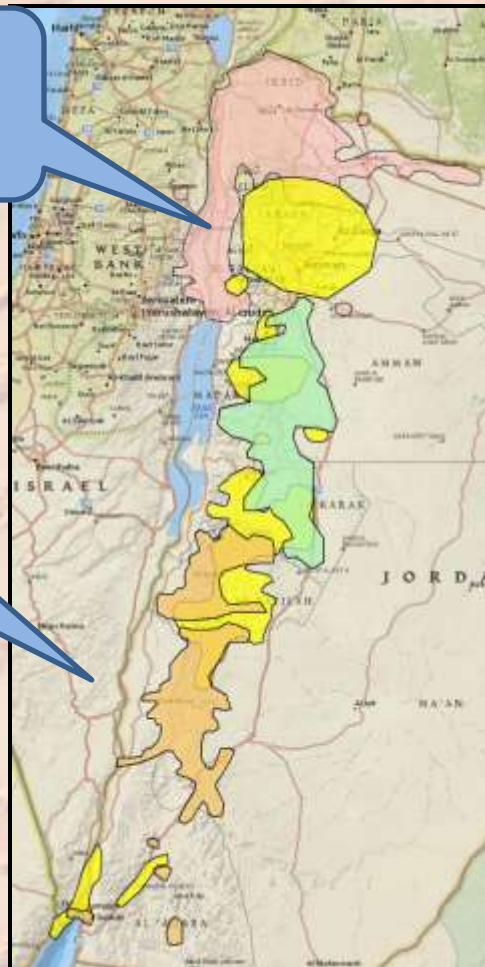
ALSO visit the Glueck maps on WorldMap

<http://worldmap.harvard.edu/maps/glueck/IOZ>

Four Survey Areas - Boundaries

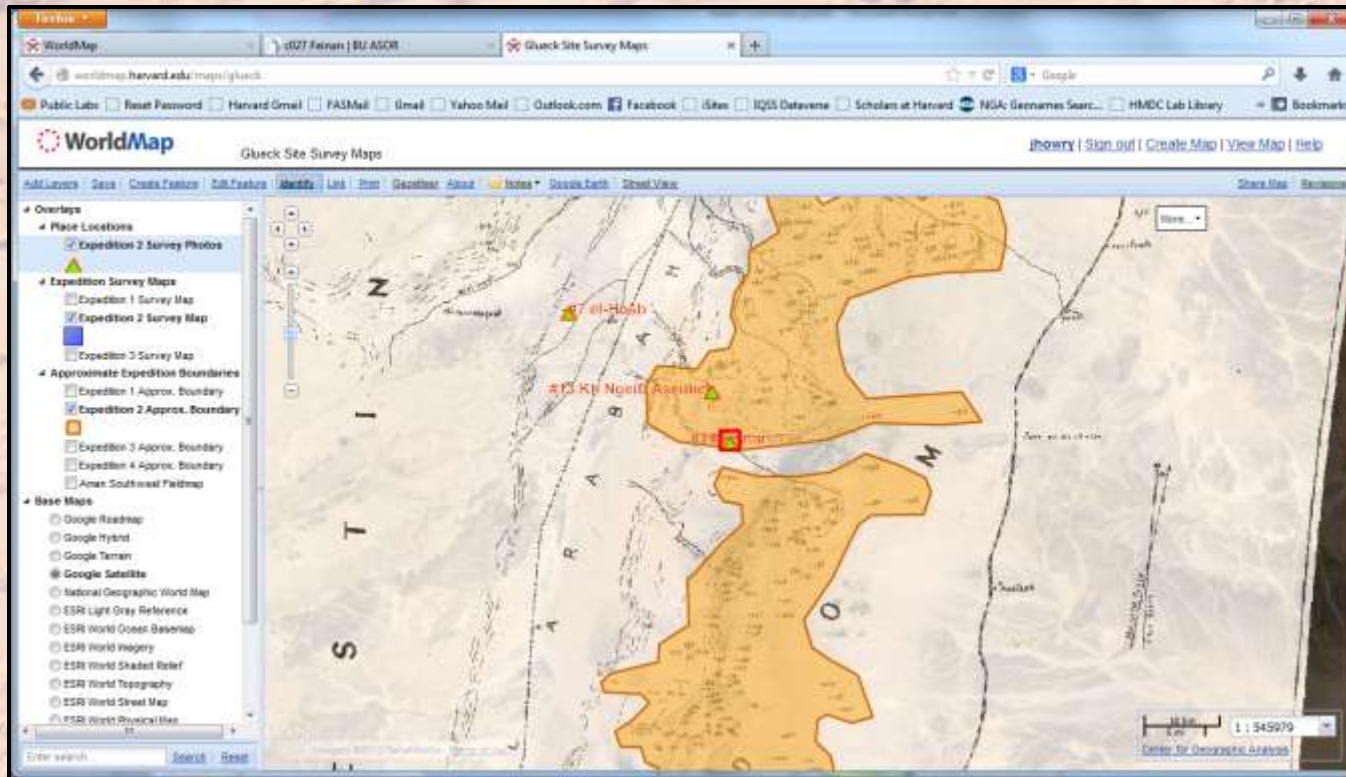
**Delineated
Survey Areas**

**Georeferenced
Survey Map**

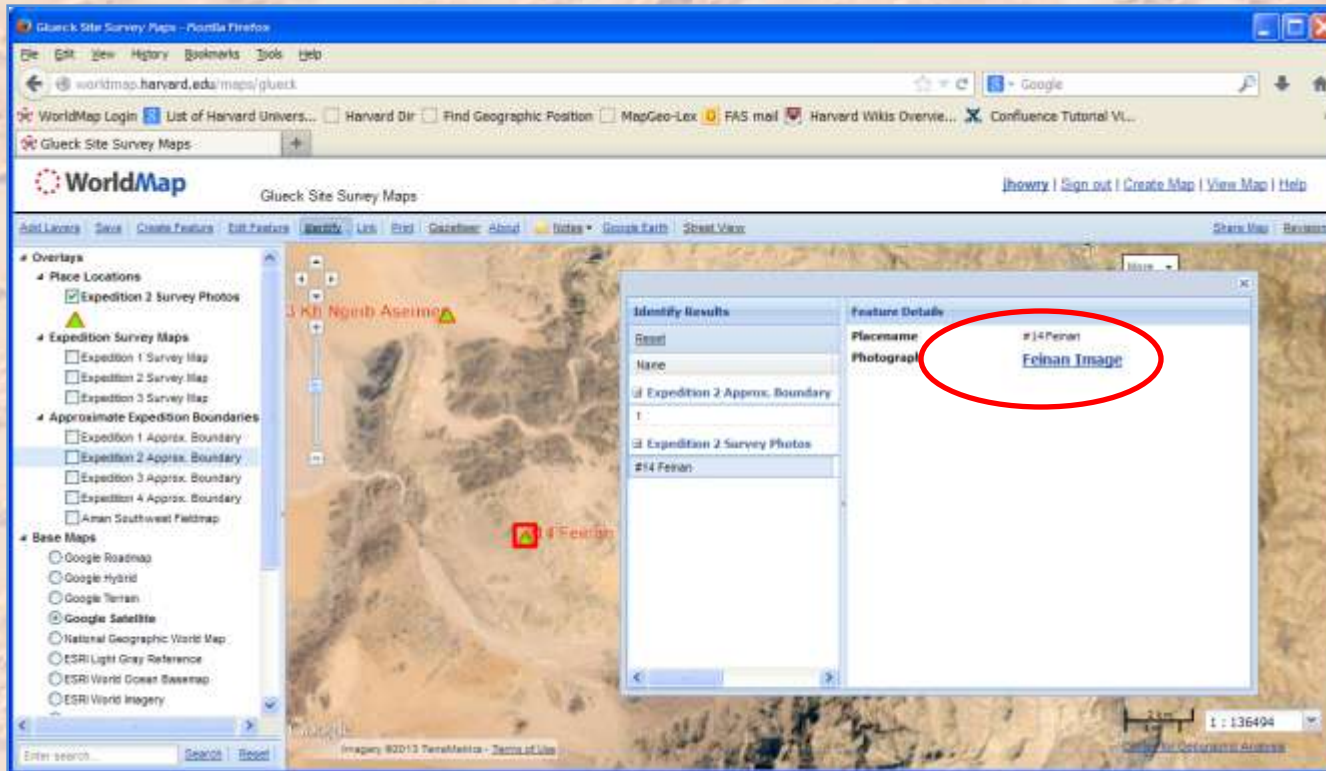


**Georeferenced the
published survey maps
which were used for
estimating the extent of
the areas surveyed.**

Mapping Sites to ASOR's Archive



Georeferenced site of Feinan & Link to ASOR Archive



Site Location linked to ASOR Archive

c027 Feinan | BU ASOR



c027Feinan001thumb.jpg (JPEG Image, 912.63 KB)
[Download Original File](#)
[Request hi-res copy](#)

Title: c027 Feinan
Date: n.d., 1932
Description: Views of ruined aqueduct, Byzantine church, roman watch tower and surrounding landscape at Khirbet Feinan, site of Biblical "Punon".
Phys. Desc: B&W prints.
Repository: BU ASOR
Found in: [Nelson Glueck Photograph Collection \(Compiled by E. Vogel\), 1920-1970](#) → [Drawer 1](#) → [Folder 126: Feinan, n.d., 1932](#)
Creators: [Glueck, Nelson \(1900-1971\)](#)
Subjects: [Archaeological sites -- Jordan](#)
[Architecture](#)
[Glueck, Nelson, 1900-1971](#)
[Landscapes](#)
[Local people](#)
[Mountains](#)
[Photographs](#)
[Valleys](#)
[Vogel, Eleanor K. \(Eleanor Kuhlmann\)](#)

Publisher: American Schools of Oriental Research
Rights: Please contact ASOR if you would like to reproduce this image. Images owned by ASOR may not be reproduced without permission.

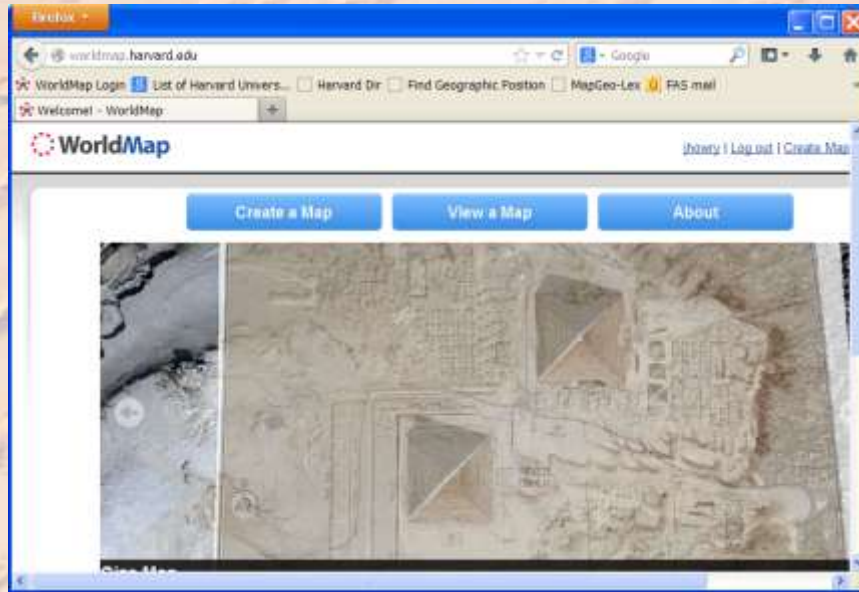
This image has been made accessible for purposes of education and research. We have indicated what we know about copyright and r. Due to the nature of archival collections, we are not always able to identify this information. We are eager to hear from any rights ow information. Upon request, we will remove material from public view while we address a rights issue.



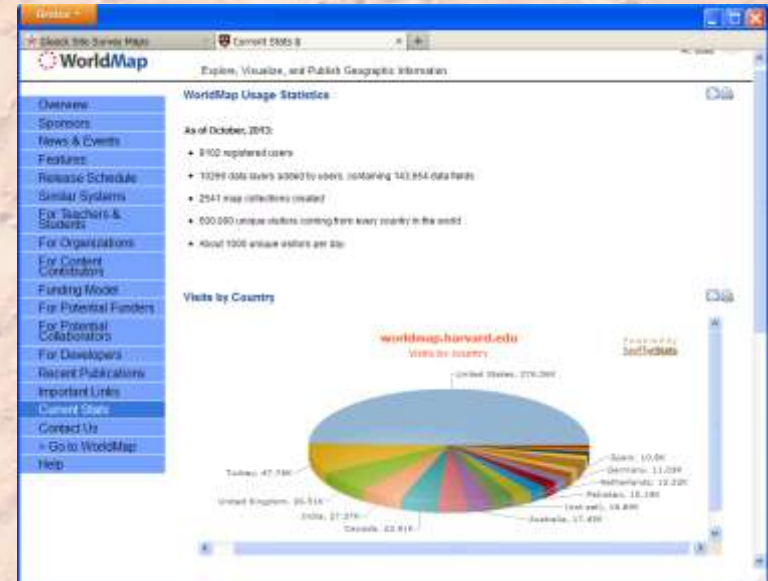
c027Feinan002thumb.jpg (JPEG Image, 681.99 KB)
[Download Original File](#)

Site Photo documentation of Feinan

WorldMap Demonstration



What is WorldMap? – about.worldmap.harvard.edu



Jeff Howry, Semitic Museum, Harvard University (jhowry@fas.harvard.edu)
Cynthia Rufo-McCormick, ASOR Archivist (arch@asor.org)

Special thanks to the **Center for Geographic Analysis, Harvard University** for their assistance with the **Desert Crossroads** and **Women in ASOR** projects.