



HARVARD SEMITIC MUSEUM

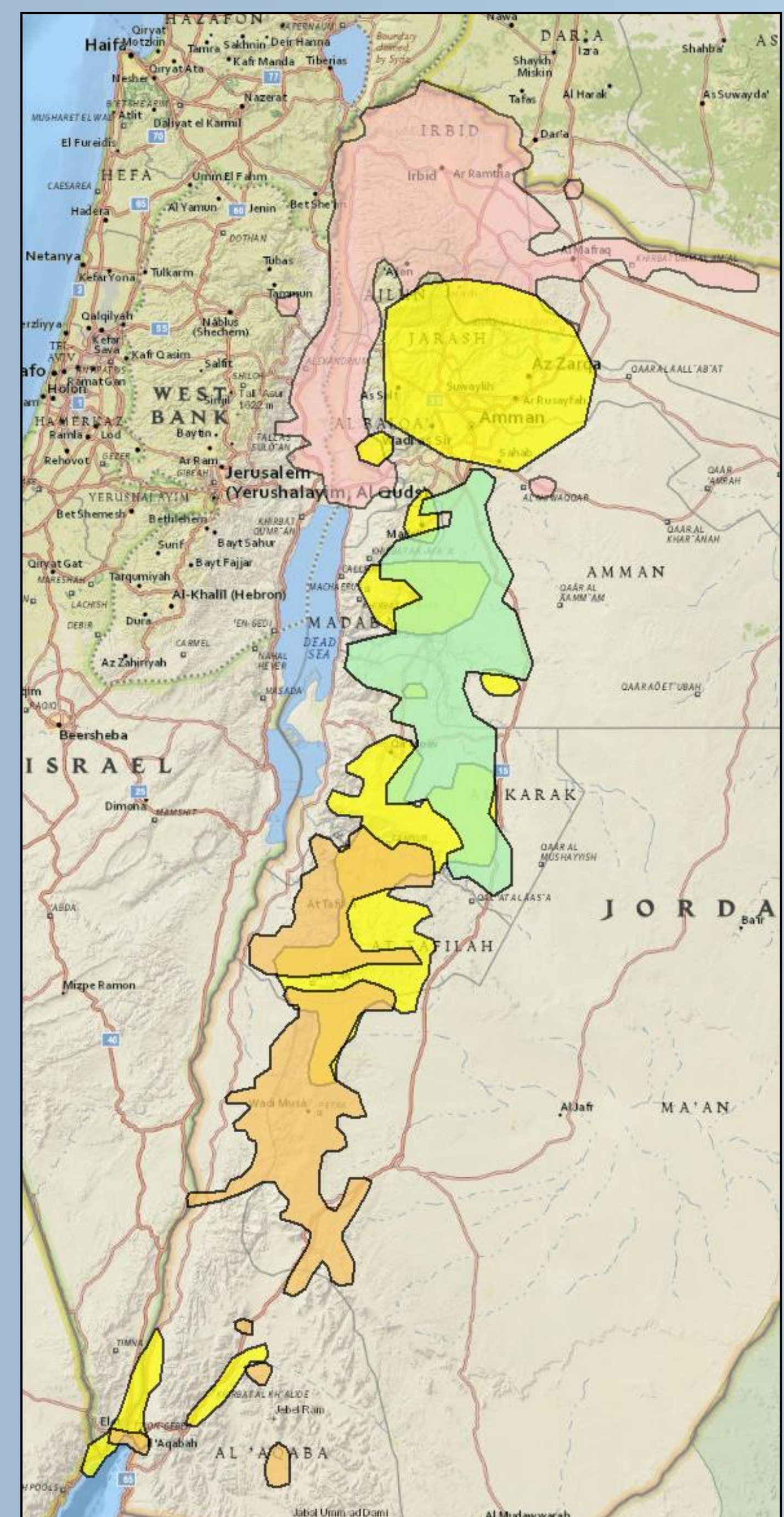
Worldmap – A GIS Platform for Scholars



Jerusalem 1902
David Lyon – Curator, Semitic Museum

ASOR Surveys 1935-1942

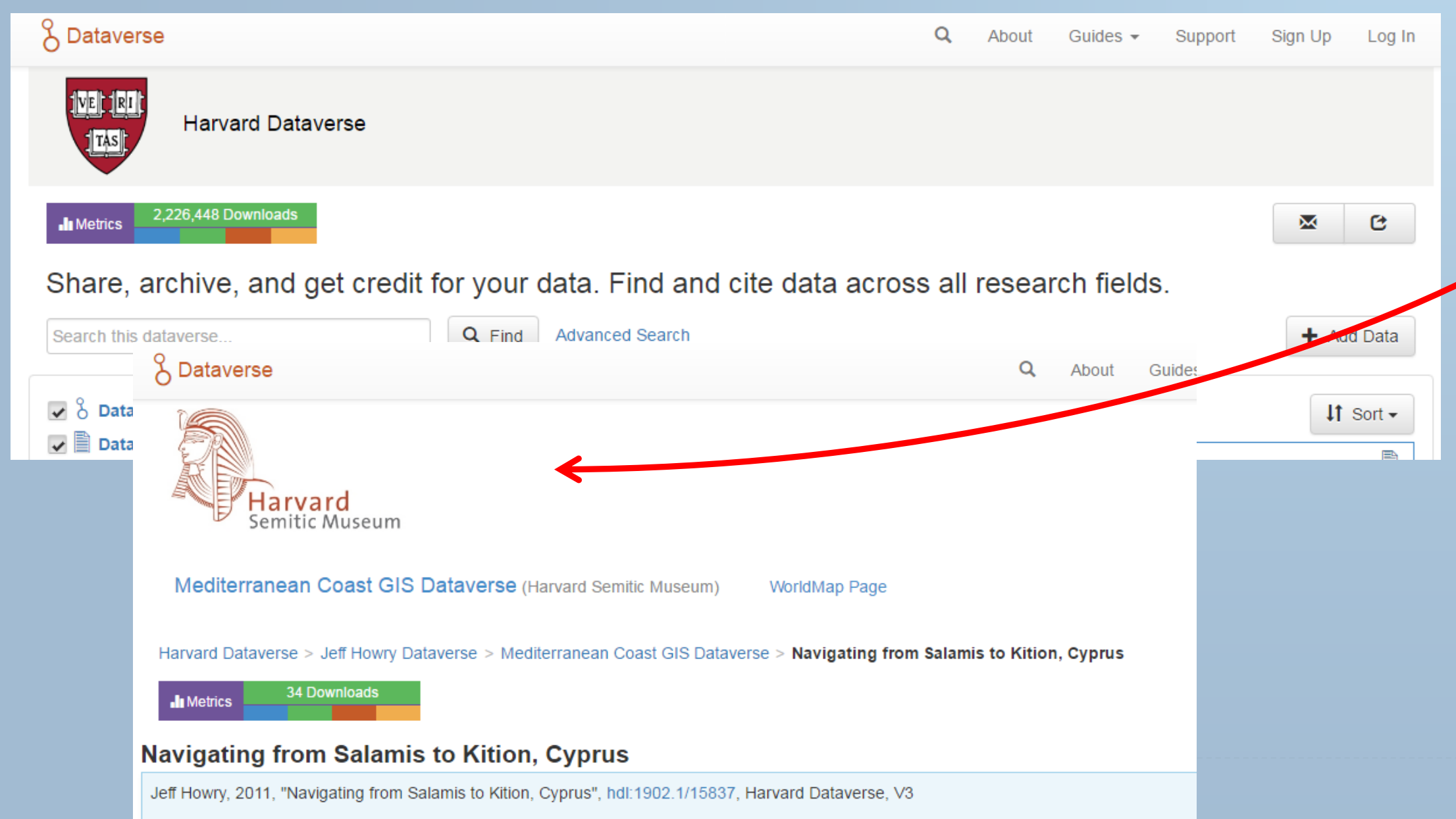
Nelson Glueck Surveys of the Transjordan



- Exped_1_Survey_Areas
- Exped_2_SurveyArea
- Exped_3_Survey_Area
- Exped_4_Survey_Area

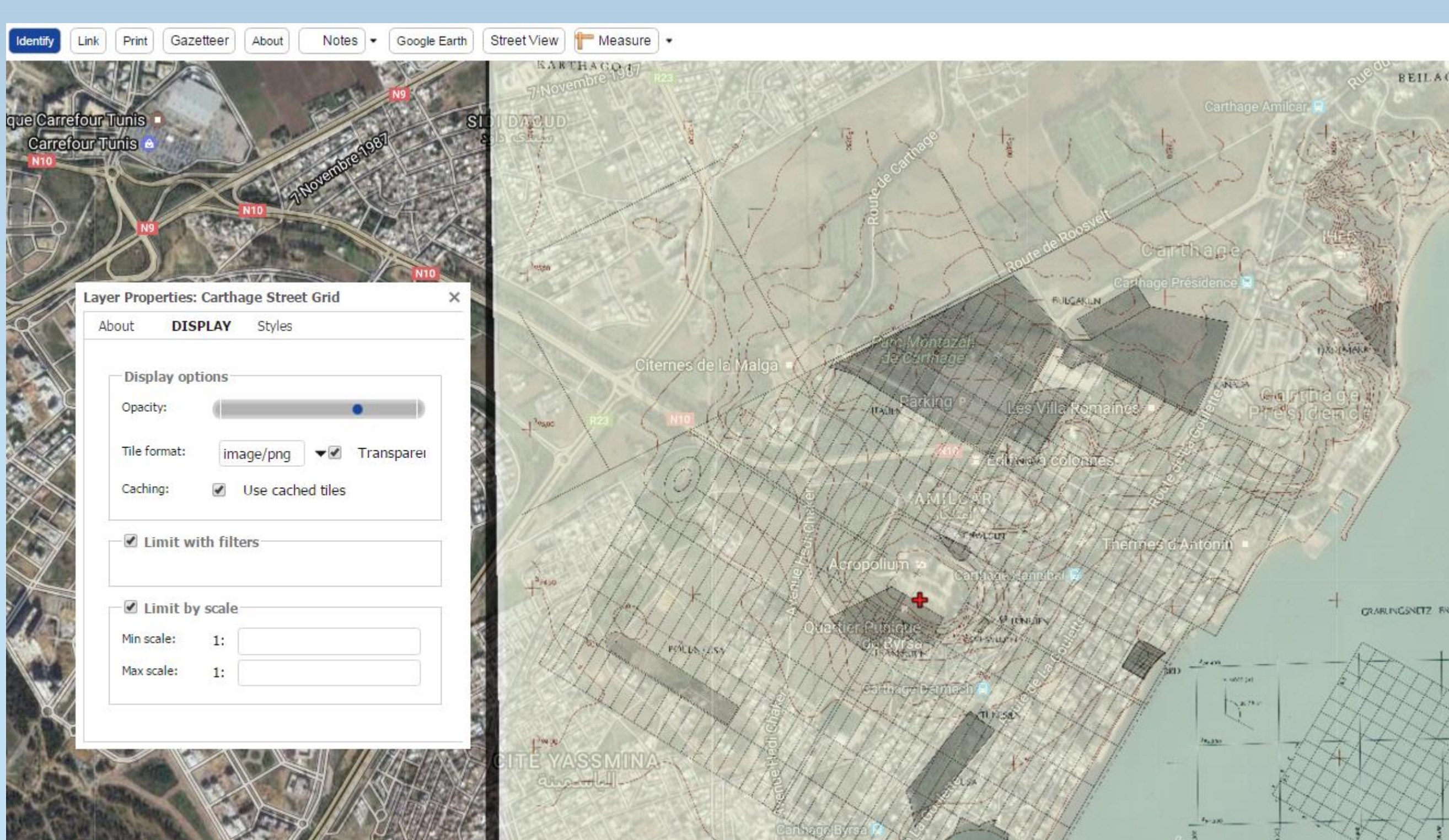
Four Survey Areas & Survey Maps Are available on Worldmap
<http://worldmap.harvard.edu/maps/glueck>

Integration with Dataverse – A Digital Archive for the Social Sciences

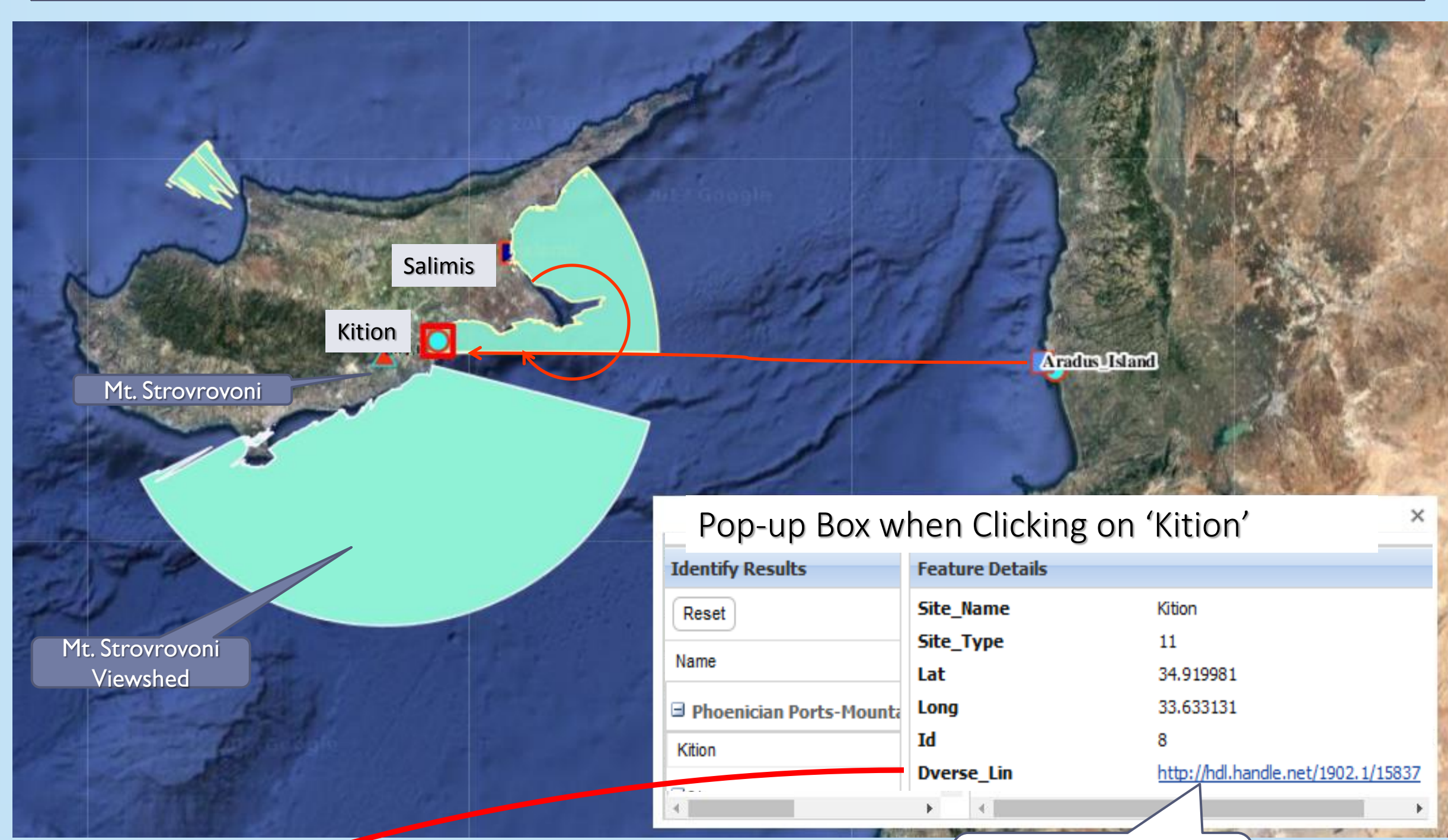


Prepared by – **Jeff Howry**, Semitic Museum
Harvard University
(jhowry@fas.harvard.edu)

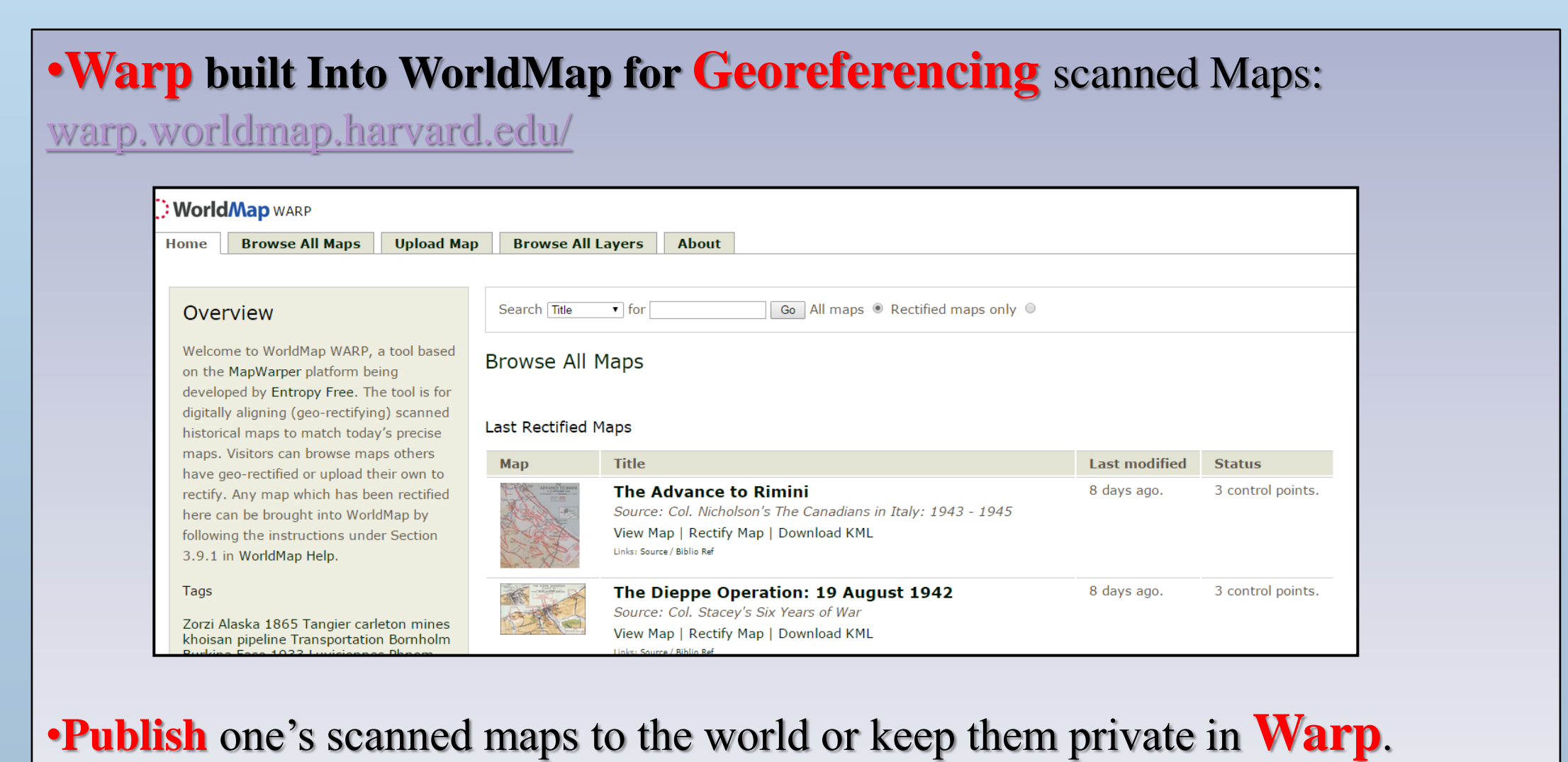
Carthage Street Plan Overlay



Viewshed Analysis – Sailing to Kition

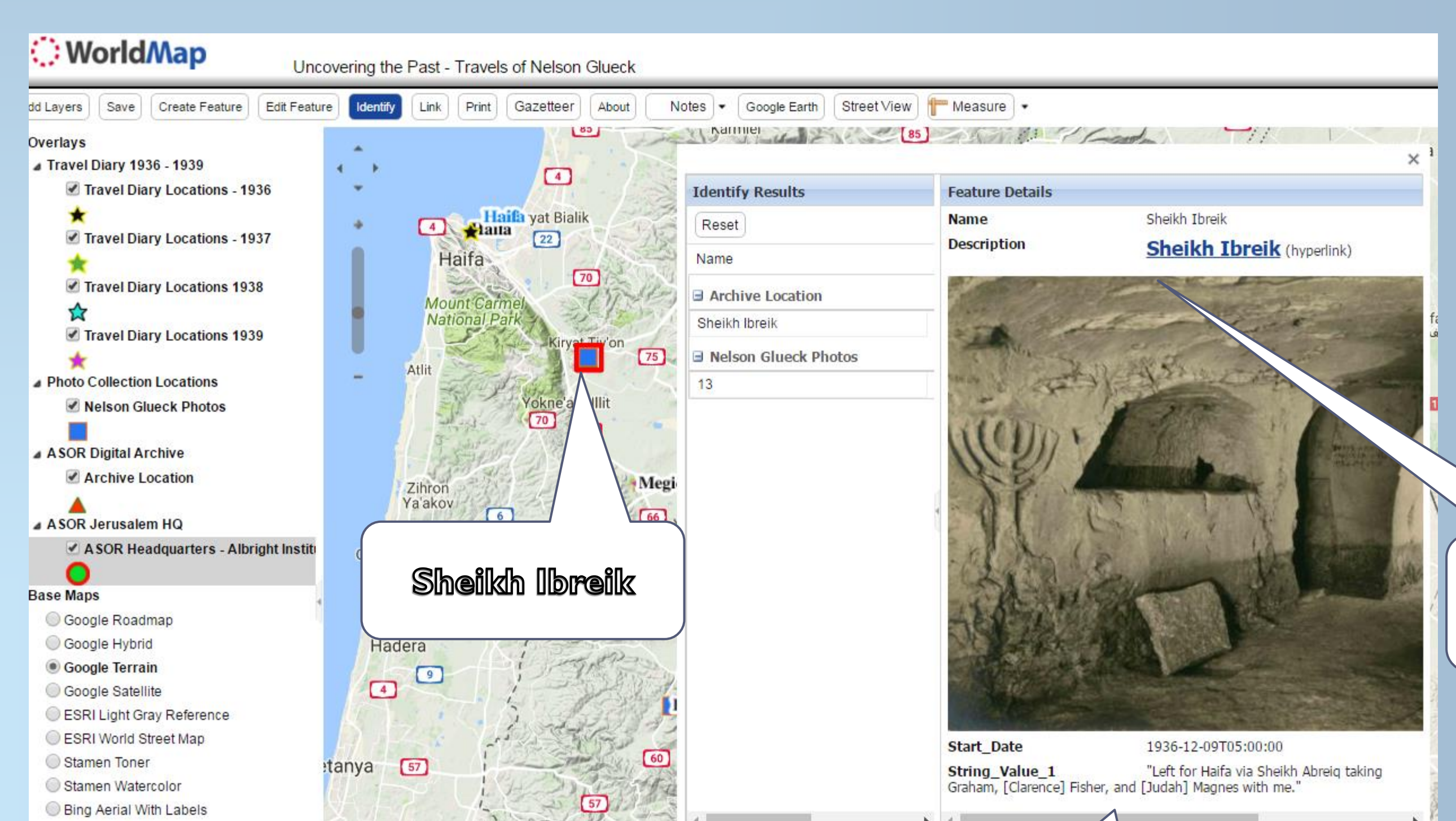


Warp – Online Georeferencing



Worldmap.harvard.edu

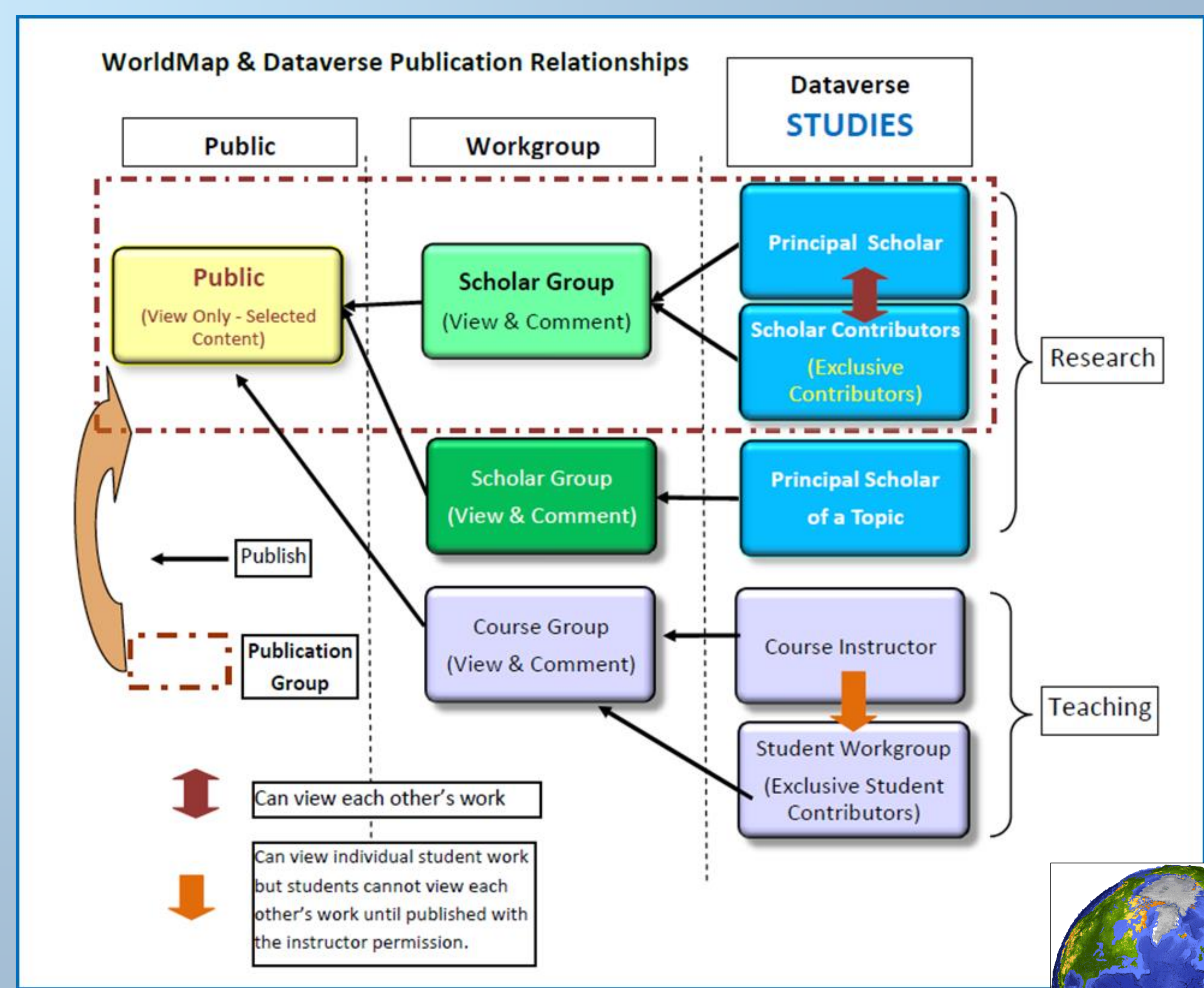
Travelogue with Images



Clicking on the Site Icon presents a pop-up with ...

Date: 1936-12-09
"Left for Haifa via Sheikh Abreiq taking Graham, [Clarence] Fisher, and [Judah] Magnes with me."

Collaboration & Publishing



Developed by the Harvard Center for Geographic Analysis
gis.harvard.edu