

# The Past-Tense Debate

## The past and future of the past tense

Steven Pinker and Michael T. Ullman

**What is the interaction between storage and computation in language processing? What is the psychological status of grammatical rules? What are the relative strengths of connectionist and symbolic models of cognition? How are the components of language implemented in the brain? The English past tense has served as an arena for debates on these issues. We defend the theory that irregular past-tense forms are stored in the lexicon, a division of declarative memory, whereas regular forms can be computed by a concatenation rule, which requires the procedural system. Irregulars have the psychological, linguistic and neuropsychological signatures of lexical memory, whereas regulars often have the signatures of grammatical processing. Furthermore, because regular inflection is rule-driven, speakers can apply it whenever memory fails.**

For fifteen years, the English past tense has been the subject of a debate on the nature of language processing. The debate began with the report of a connectionist model by Rumelhart and McClelland [1] and a critique by Pinker and Prince [2], and has since been the subject of many papers, conferences and simulation models [3–7] (see also McClelland and Patterson in this issue [8]).

The past tense is of theoretical interest because it embraces two strikingly different phenomena. Regular inflection, as in *walk-walked* and *play-played*, applies predictably to thousands of verbs and is productively generalized to neologisms such as *spam-spammed* and *mosh-moshed*, even by preschool children [9]. Irregular inflection, as in *come-came* and *feel-felt*, applies in unpredictable ways to some 180 verbs, and is seldom generalized; rather, the regular suffix is often overgeneralized by children to these irregular forms, as in *holded* and *breaked* [10,11]. A simple explanation is that irregular forms must be stored in memory, whereas regular forms can be generated by a rule that suffixes *-ed* to the stem [12,13]. Rumelhart and McClelland challenged that explanation with a pattern-associator model (RMM) that learned to associate phonological features of the stem with phonological features of the past-tense form. It thereby acquired several hundred regular and irregular forms and overgeneralized *-ed* to some of the irregulars.

The past tense has served as one of the main empirical phenomena used to contrast the strengths

and weaknesses of connectionist and rule-based models of language and cognition [8]. More generally, because inflections like the past tense are simple, frequent, and prevalent across languages, and because the regular and irregular variants can be equated for complexity and meaning, they have served as a test case for issues such as the neurocognitive reality of rules and other symbol-manipulating operations and the interaction between storage and computation in cognitive processing [5–7].

In this article we defend the side of this debate that maintains that rules are indispensable for explaining the past tense, and by extension, language and cognitive processes [3–5,14]. We review what the theory does and doesn't claim, the relevant evidence, the connectionist challenges, and our hopes for the future of the debate.

### The Words-and-Rules theory

The Words and Rules (WR) theory claims that the regular-irregular distinction is an epiphenomenon of the design of the human language faculty, in particular, the distinction between lexicon and grammar made in most traditional theories of language. The lexicon is a subdivision of memory containing (among other things) the thousands of arbitrary sound-meaning pairings that underlie the morphemes and simple words of a language. The grammar is a system of productive, combinatorial operations that assemble morphemes and simple words into complex words, phrases and sentences. Irregular forms are just words, acquired and stored like other words, but with a grammatical feature like 'past tense' incorporated into their lexical entries. Regular forms, by contrast, can be productively generated by a rule, just like phrases and sentences. A stored inflected form of a verb blocks the application of the rule to that verb (e.g. *brought* pre-empts *bringed*). Elsewhere (by default) the rule applies: it concatenates *-ed* with the symbol 'V', and thus can inflect any word categorized as a verb (see Fig. 1).

Irregular forms, then, do not require an 'exception module'. They arise because the two subsystems overlap in their expressive power: a given combination of features can be expressed by words or rules. Thus either a word (irregular) or a rule-product (regular) can satisfy the demand of a syntactic or semantic representation that a feature such as past tense be overtly expressed. Diachronically, an irregular is born when (for various reasons) learners memorize a complex word outright, rather than parsing it into a stem and an affix that codes the feature autonomously [3].

#### Steven Pinker\*

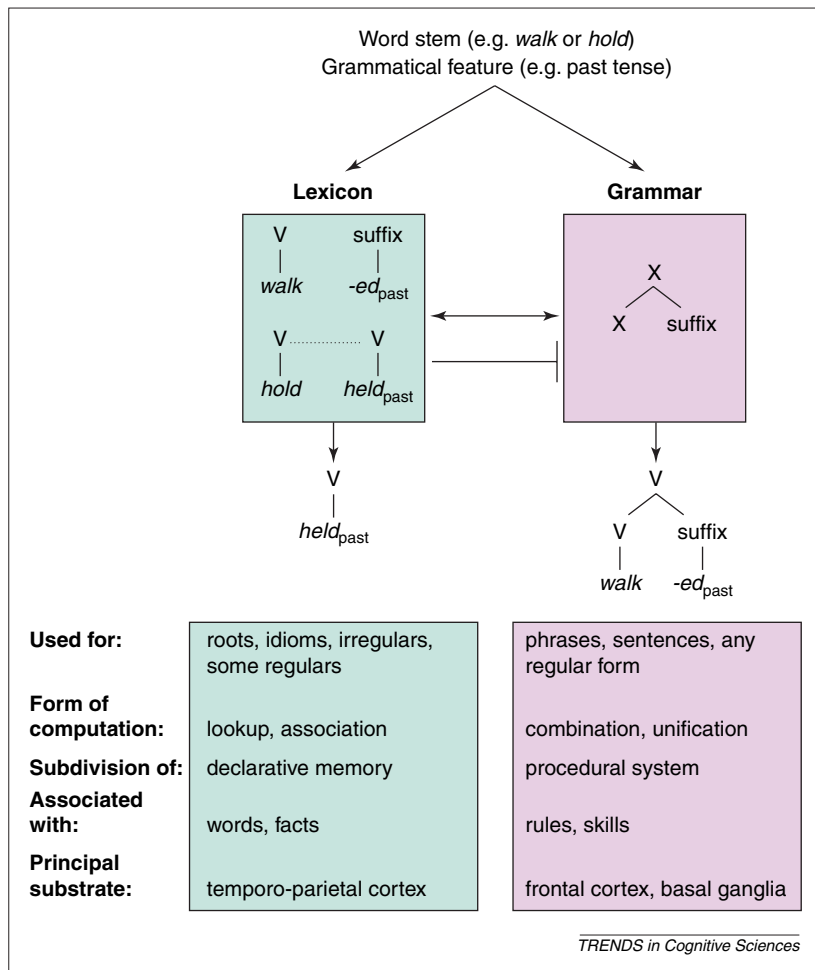
Dept of Brain and Cognitive Sciences, NE20-413, Massachusetts Institute of Technology, Cambridge, MA 02139, USA.

\*e-mail: steve@psyche.mit.edu

#### Michael Ullman

Dept of Neuroscience, Research Building EP-04, Georgetown University, 3900 Reservoir Rd, NW, Washington DC 20007, USA.

e-mail: michael@georgetown.edu



**Fig. 1.** Simplified illustration of the Words-and-Rules (WR) theory and the Declarative/Procedural (DP) hypothesis. When a word must be inflected, the lexicon and grammar are accessed in parallel. If an inflected form for a verb (V) exists in memory, as with irregulars (e.g. *held*), it will be retrieved; a signal indicating a match blocks the operation of the grammatical suffixation process via an inhibitory link from lexicon to grammar, preventing the generation of *holded*. If no inflected form is matched, the grammatical processor concatenates the appropriate suffix with the stem, generating a regular form.

The WR theory contrasts with classical theories of generative phonology and their descendents, such as those of Chomsky and Halle [15–17], which generate irregular forms by affixing an abstract morpheme to the stem and applying rules that alter the stem's phonological composition. Such theories are designed to account for the fact that most irregular forms are not completely arbitrary but fall into families displaying patterns, as in *ring-rang*, *sink-sank*, *sit-sat*, and *feel-felt*, *sleep-slept*, *bleed-bled*. A problem for this view is that irregular families admit numerous positive and negative counterexamples and borderline cases, so any set of rules will be complex and laden with exceptions, unless it posits implausibly abstract underlying representations (e.g. *rin* for *run*, which allows the verb to undergo the same rules as *sing-sang-sung*).

The theory also contrasts with the Rumelhart–McClelland model (RMM) and other connectionist models that posit a single pattern associator, with neither lexical entries nor a

combinatorial apparatus [1, 18, 19]. The key to these pattern associators is that rather than linking a word to a word stored in memory, they link sounds to sounds. Because similar words share sounds, their representations are partly superimposed, and any association formed to one is automatically generalized to the others. This allows such models to acquire families of similar forms more easily than arbitrary sets, and to generalize the patterns to new similar words. Having been trained on *fling-flung* and *cling-clung*, they may generalize to *spling-splung* (as children and adults occasionally do [20, 21]); and having been trained on *flip-flipped* and *clip-clipped*, they generalize to *plip-plipped*.

WR is descended from a third approach: the lexicalist theories of Jackendoff, Lieber, and others, who recognized that many morphological phenomena are neither arbitrary lists nor fully systematic and productive [22–25]. They posited 'lexical redundancy rules', which do not freely generate new forms but merely capture patterns of redundancy in the lexicon, and allow sporadic generalization by analogy. Pinker and Prince proposed that lexical redundancy rules are not rules at all, but consequences of the superpositional nature of memory: similar items are easier to learn than arbitrary sets, and new items resembling old ones tend to inherit their properties. They argued that RMM's successes came from implementing this feature of memory, and proposed the WR theory as a lexicalist compromise between the generative and connectionist extremes. Irregulars are stored in a lexicon with the superpositional property of pattern associators; regulars can be generated or parsed by rules.

Ullman and colleagues have recently extended the WR theory to a hypothesis about the neurocognitive substrate of lexicon and grammar. According to the Declarative/Procedural (DP) hypothesis [5, 26], lexical memory is a subdivision of declarative memory, which stores facts, events and arbitrary relations [27, 28]. The consolidation of new declarative memories requires medial-temporal lobe structures, in particular the hippocampus. Long-term retention depends largely on neocortex, especially temporal and temporo-parietal regions; other structures are important for actively retrieving and searching for these memories. Grammatical processing, by contrast, depends on the procedural system, which underlies the learning and control of motor and cognitive skills, particularly those involving sequences [27, 28]. It is subserved by the basal ganglia, and by the frontal cortex to which they project – in the case of language, particularly Broca's area and neighboring anterior cortical regions. Irregular forms must be stored in the lexical portion of declarative memory; regular past-tense forms can be computed in the grammatical portion of the procedural system.

### What the words-and-rules theory does not say

The WR theory does not literally posit the discrete rule 'to form the past tense, add *-ed* to the verb'. All it posits is the past-tense morpheme *-ed*, a variable 'V' (included both in the attachment conditions for *-ed* and the lexical entry of every verb), and a general operation of merging or unifying constituents. The 'regular rule' or 'past-tense rule' is shorthand for the unification operation applied to the past-tense morpheme. WR is thus compatible with constraint- and construction-based theories of language, as long as they allow for variables and combinatorial operations [29].

WR does not posit that regular forms are *never* stored, only that they do not *have to be* [3,30–32]. It would be difficult to prohibit regular forms from ever being stored, given that human memory can acquire many kinds of verbal material (e.g. idioms, clichés, poems). WR posits a parallel-race model, like those defended for inflection by Baayen and Caramazza and by many psycholinguists for visual word recognition [33–39]. Whether a regular form is stored, and whether stored regular forms are accessed, depends on word-, task-, and speaker-specific factors [5,40–43]. For example, regular forms that constitute doublets with irregulars, such as *dived/dove* and *dreamed/dreamt*, must be stored to escape blocking by the irregular. As predicted, judgments of the naturalness of regular doublet forms show strong effects of frequency but other regular forms do not [30]. The same is true for regular forms of verbs that resemble irregulars (such as *blinked* and *glided*), because the forms must overcome a partial blocking effect exerted by the similar irregulars [30,32]. Tasks that require people to be sensitive to the physical form of words (such as progressive demasking) or to the prior existence of words (such as lexical decision), as opposed to tasks that ask people to judge possible forms, are likely to tap stored representations for medium- and high-frequency regular forms [3,35,44].

Finally, WR is not a chimera of a connectionist pattern associator glued onto a rule system. The lexicon has superpositional properties similar to a pattern associator, but lexical entries have structured semantic, morphological, phonological and syntactic representations of a kind not currently implemented in pattern associators.

### Empirical tests

The key predictions of WR are: (1) that irregulars should have the psychological, linguistic and neuropsychological signatures of lexical memory, whereas regulars will often have the signatures of grammatical processing; and (2) that speakers should apply regular inflection whenever memory fails to supply a form for that category. A stored form may be unavailable for many reasons: low or zero frequency, lack of a similar form that could inspire an analogy, inaccessibility because of a word's exocentric structure (see below), novelty of the form in childhood,

and various kinds of damage to the neurological substrate of lexical memory. The heterogeneity of these regular-eliciting circumstances offers converging evidence for distinguishable subsystems, including a productive default that does not critically depend on the statistics of patterns in memory. Here we discuss three types of evidence for a distinction between lookup and concatenation, and connectionists' attempts to provide alternative accounts (for reviews, see [3,4,14,31]).

### Generalization to unusual novel words

The RMM model produced odd blends (*mail-memled*, *trilb-treelilt*), or no output, for novel words unlike those in its training set [2,20]. People, by contrast, readily apply regular inflections to novel unusual words [20]. According to WR, this is because *-ed* can attach to any word classified as a verb, even if dissimilar to existing stored regulars.

One connectionist explanation of the difficulties of the model is that they are specific to RMM, which is an early modeling exercise lacking a proper phonological representation, a hidden layer, and a proper output decoder. However, a pattern associator remedying all three deficiencies also had trouble generalizing to unusual words [45]. More recent models that are claimed to solve the problem do so, tellingly, by implementing or presupposing a rule. For example, Hare, Elman and Daugherty installed a 'clean-up network' in which the units for *-ed* strengthen the units for an unchanged stem vowel and inhibit the units for a changed vowel [46] – in effect, an innate mechanism dedicated to the English past tense. Many recent models have given up on generating past-tense forms; their output layer contains one unit for every past-tense change, turning inflection into a multiple-choice test among a few innate possibilities [47–49]. To convert the choice into an actual form, some other mechanism would have to copy the stem and apply the pattern corresponding to the selected unit. Such a mechanism is simply a rule. Marcus has argued that pattern associators' difficulty in generalizing to dissimilar forms is rooted in their design [4].

Another response is to claim that people's success at generalization depends on certain statistical patterns that also foster generalization in pattern associators. Many connectionists claimed that robust generalization depends on regular forms constituting the majority of forms in the child's input [50]. However, the onset and rate of over-regularization errors in children do not correlate with changes in the number or proportion of regular verbs used by parents [11,51,52]. Moreover, there are regular inflections in other languages, such as the German *-s* plural, that apply to a minority of nouns (~7%), but are generalized like English regular inflection, namely, to unusual nouns, exocentric nouns, and in childhood [50].

Several modelers now argue that it is not the number or proportion of regular words that is crucial but their distribution in phonological

## Box 1. Systematic regularization

An intriguing aspect of inflection is that irregular forms can sometimes turn up in regular form. Some of these regularizations are unsystematic – for example, doublets such as *dived/dove* and *dreamt/dreamed*, in which the regular form is used sporadically because the irregular form is low in frequency and hence poorly remembered. But many are systematic: in particular contexts, the regular form is consistently used, such as *ringed the city* and *low-lives*.

The Words-and-Rules theory explains this phenomenon using an independently motivated theory of compositionality in word-formation [a,b] (see also Fig. 2 in main article). Irregular-sounding words are regularized if they lack a root in head position that can be marked for the inflectional feature (tense or number). The regular suffix applies as the default, as it does in other cases where memory access is disabled. This neatly explains a diverse set of systematic regularizations found in actual usages, laboratory experiments with adults and children, and many languages [c–f]:

### The word lacks a noun or a verb root

- **onomatopoeia:** *dinged, pinged, zinged, peeped, beeped*
- **quotations:** 'I found three man's on page 1'; 'We to be'd and not to be'd in this room'
- **names:** *the Julia Childs, the Thomas Manns, the Shelby Footes*
- **truncations:** *synched, sysmans*
- **unassimilated borrowings:** *talismans, mongooses*

### The root cannot be marked for the feature

- **verbs with noun or adjective roots:** *ringed the city, steeled myself, spitted the pig, bared his soul, righted the boat, stringed the peas*
- **nouns with verb roots:** *a few loafs* (episodes of loafing), *a couple of wolfs* (wolfing down food)

### The word's structure is exocentric

- **verbs based on nouns based on verbs:** *grandstanded, flied out, costed out the grant, encasted his leg*
- **nouns based on names based on nouns:** *Mickey Mouses* (simpletons), *Renault Elfs, Top Shelves* (frozen food), *Seawolfs* (aircraft), *Toronto Maple Leafs*
- **nouns whose referents are distinct from those of their roots:** *low-lives, still lifes, sabre-tooths, Walkmans, tenderfoots*
- **nouns based on phrases:** *Bag-A-Leafs, Shear-A-Sheeps*

Although the meaning of the regularized forms differs from that of their irregular counterparts, regularization is rarely triggered by differences in

semantic features alone, as connectionists sometimes suggest [g,h]. If an irregular-sounding word changes in meaning, but retains a root in head position, it stays irregular, no matter how radical the change or opaque the metaphor:

- **compositional prefixing:** *overate, overshot, undid, preshrank, remade, outsold*
- **non-compositional prefixing:** *overcame, understood, withdrew, beheld, withstood, undertook*
- **compounding:** *bogeymen, superwomen, muskoxen, stepchildren, milkteeth*
- **metaphors:** *straw men, chessmen, snowmen, sawteeth, metrical feet, six feet tall, brainchildren, children of a lesser god, beewolves, wolves in sheep's clothing*
- **idioms:** *went out with* (dated), *went nuts* (demented), *went in for* (chose), *went off* (exploded), *went off* (spoiled); *took in* (swindled), *took off* (launched), *took in* (welcomed), *took over* (usurped), *took up* (commenced), *took a leak* (urinated), *took a bath* (lost money), *took a bath* (bathed), *took a walk* (walked); *blew over* (ended), *blew away* (assassinated), *blew away* (impressed), *blew up* (exploded), *blew up* (inflated), *blew off* (dismissed), *blew in* (arrived)

[scores of other examples with *come, do, have, get, set, put, stand, throw*, etc.]

### References

- Williams, E. (1981) On the notions of 'lexically related' and 'head of a word'. *Linguist. Inq.* 12, 245–274
- Selkirk, E.O. (1982) *The Syntax of Words*, MIT Press
- Pinker, S. (1999) *Words and Rules: The Ingredients of Language*, HarperCollins
- Kim, J.J. et al. (1994) Sensitivity of children's inflection to morphological structure. *J. Child Lang.* 21, 173–209
- Marcus, G.F. et al. (1995) German inflection: the exception that proves the rule. *Cogn. Psychol.* 29, 189–256
- Berent, I. et al. (1999) Default nominal inflection in Hebrew: evidence for mental variables. *Cognition* 72, 1–44
- Daugherty, K.G. et al. (1993) Why no mere mortal has ever flown out to center field but people often say they do. In *15th Annu. Conf. Cogn. Sci. Soc.*, Erlbaum
- Harris, C.L. (1992) Understanding English past-tense formation: the shared meaning hypothesis. In *Proc. 14th Annu. Conf. Cogn. Sci. Soc.*, Erlbaum

space [46,48,53,54]. If irregulars fall into clusters of similar forms (*sing, ring, spring, grow, throw, blow*; etc.), but regulars are sprinkled through no-man's-land, (*rhumba'd, oinked*, etc.), one can design pattern associators that devote some of their units and connections to the no-man's-land, and they will generalize to new unusual words. Putting aside the problem that most of these models have their inflections innately wired in, the models cannot deal with languages such as Hebrew, where regular and irregular nouns are intermingled in the same phonological neighborhoods. Nonetheless, Hebrew regular plural suffixes behave like -s in English and German: speakers apply them to unusual-sounding and exocentric nouns [55,56].

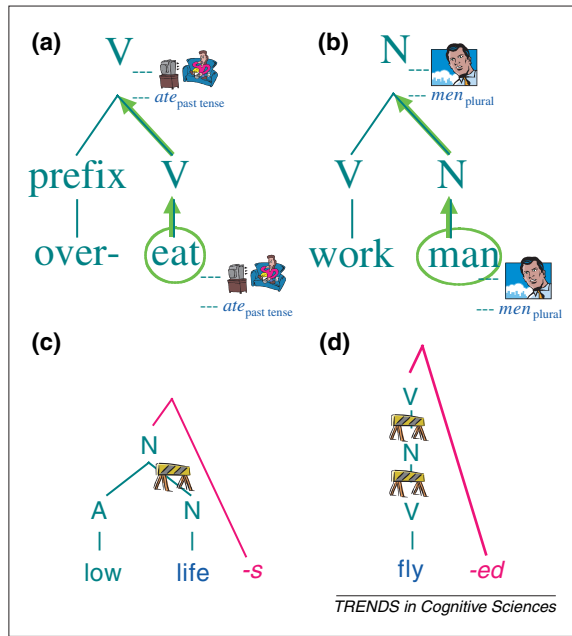
### Systematic regularization

Some irregulars show up in regular form in certain contexts, such as *ringed the city* (not *rang*), *grandstanded* and *low-lives* [2,57] (see Box 1 for further examples). This shows that sound alone cannot be the input to the inflection system: a given

input, like *ring*, can be inflected either as *rang* or *ringed*, depending on some other factor.

The phenomenon falls out of the grammatical mechanism governing how complex words are formed [24,50,58,59]. Generally a complex English word inherits its features from its rightmost morpheme, its 'head'. For example, the head of *overeate* is *eat*; therefore, *overeate* is a verb (it inherits the 'V' category of *eat*), it refers to a kind of eating (because it inherits the semantic features of *eat*), and it has the irregular past-tense *overate* (because it inherits the stored past-tense form of *eat*) (see Fig. 2).

But there is a small family of exceptions: headless (exocentric) words, which for various reasons cannot get their features from their rightmost morpheme. For example, unlike endocentric verbs such as *overeate-overate* and *outdo-outdid*, which are verbs based on verbs, *to ring* and *to grandstand* are verbs based on nouns (*a ring, a grandstand*). In forming or parsing the word, the head-inheritance mechanism must be circumvented. With that data pathway plugged, there is no way for the irregular forms *rang*



**Fig. 2.** Systematic regularization. Complex words are assembled out of simple morphemes according to a 'righthand-head' rule: the rightmost morpheme, the head, contributes its syntactic, semantic and morphological properties to the word as a whole. Thus in (a), the combination of *over-* and *eat* is a verb, because its head (circled), *eat*, is a verb (V); its meaning is a kind of eating (eating too much), because that is the meaning of *eat*, and its past-tense form is *overate*, because the irregular past-tense of *eat* is *ate*. All three kinds of information percolate up from the lexical entry for the head in memory along the rightmost edge of the word's tree structure (thick arrows). Similarly in (b), the combination of *work* and *man* is a noun (N), it refers to a kind of man, and its plural is *workmen*, the result of its inheriting all three properties from its head, *man*. However, a handful of derived words in English (headless or exocentric words) have to disable this inheritance mechanism. A *low-life* (c) is not a kind of life (in the way a *workman* is a kind of man) but a person who has a low life; for the word to work this way the usual data pipeline has to be blocked (depicted by the no entry sign). This leaves the irregular plural form (*lives*), trapped in memory, and the regular suffix *-s* applies as the default. The baseball term to *fly out* (d) comes from the noun *a fly* (as in *an infield fly*), which itself came from the simple verb root *to fly* (at the bottom of the tree). The word's structure requires the inheritance mechanism to be blocked twice: to allow the verb root *fly* to be converted to the noun (because verbs ordinarily beget verbs, not nouns) and again to allow the noun to be converted back into a verb (because nouns ordinarily beget nouns). The irregular past-tense forms *flew* and *flown* are sealed in memory, and *-ed* is suffixed as the default, generating *flew* and *flown*.

or *stood* to percolate up from the entries for *ring* or *stand*. With the irregular form sealed in memory, the suffixation rule steps in as the default, yielding *ringed* and *grandstanded*. Many examples, involving diverse constructions from several language families, have been documented from naturalistic sources and experimentally elicited from children and adults [3,50,60,61]. Apparent counterexamples exist, but virtually all can independently be shown to be cases where people do not assign an exocentric structure to the word [3,60].

There have been three connectionist explanations. One is that if a pattern associator had semantic as well as phonological input units, a complex word with an altered meaning would dilute the associations to irregular forms, favoring the competing regular [62,63]. However, in almost every case in which an irregular

word's meaning changes, the irregular form is in fact retained, such as metaphors (*straw men*/*\*mans*, *sawteeth*, *God's children*) and idioms (*cut*/*\*cutted a deal*, *took a leak*, *hit the fan*, *put them down*) [2,3,50]. Accordingly, experiments have shown that just changing the meaning of an irregular verb does not cause people to switch to the regular [60,61]. Although all complex and derived words are semantically different from their bases, when semantic similarity and exocentric structure are unconfounded in a regression, exocentric structure accounts for a significant proportion of the variance in choice of inflectional form, and semantic similarity does not [60].

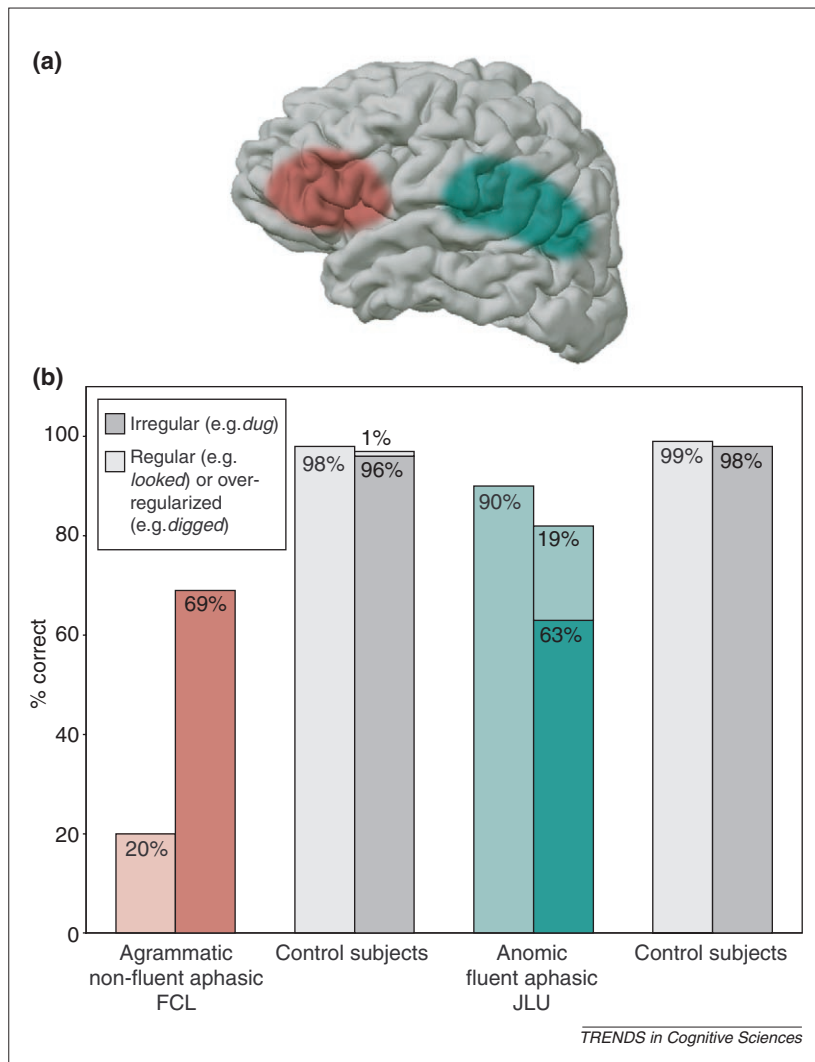
Equally unpromising is the suggestion that people regularize words to avoid ambiguity [63–65]. Many idioms are ambiguous between literal and idiomatic senses, such as *bought the farm* and *threw it up*, or among different idiomatic senses as well, such as *blew away* (impressed, assassinated), but this does not lead people to switch to a regular to disambiguate one of them (*buyed the farm*, *throwed up*). Conversely, *grandstood* and *low-lives* are unambiguous, but people still find them ungrammatical.

One connectionist model added nodes representing the semantic similarity of the verb to the homophonous noun (e.g. *to ring* and *a ring*) [64]. The network can then be trained to have these nodes turn off irregular patterns and turn on the regular one. But these unusual nodes are not part of the semantic representation of a verb itself; they are an explicit encoding of the verb's relation to the noun that heads it—that is, a crude implementation of morphological structure. In addition, the modelers had to train the network on regular past tenses of denominal verbs homophonous with irregulars. But such homophones are virtually absent from speech addressed to children, who nonetheless tend to regularize exocentric forms [61].

#### Neuropsychological dissociations

According to WR and DP, damage to the neural substrate for lexical memory should cause a greater impairment of irregular forms (and any regular forms that are dependent on memory storage), and a diminution of the tendency to analogize novel irregular-sounding forms according to stored patterns (as in *spling-splung*). In comparison, damage to the substrate for grammatical combination should cause a greater impairment of the use of the rule in regular forms, and of its generalization to novel forms.

Anomia is an impairment in word finding often associated with damage to left temporal/temporoparietal regions (see Fig. 3a). Patients often produce fluent and largely grammatical speech, suggesting that the lexicon is more impaired than grammatical combination [66]. In elicited past-tense production tasks, patients (compared with controls) do worse with irregular than with regular verbs (Fig. 3b), produce regularization errors like *swimmed* (which occur when no memorized form comes to mind and the rule applies



**Fig. 3.** Dissociating regular and irregular processing in aphasia. (a) The approximate lesion sites of patient FCL (red area, left anterior perisylvian regions), who had symptoms of agrammatism, and patient JLU (green area, left temporo-parietal region), who had symptoms of anomia. (b) Results of verb-inflection tests showed that the agrammatic patient had more trouble inflecting regular verbs (lighter bars) than irregular verbs (darker bars), whereas the anomic patient had more trouble inflecting irregular verbs – and overapplied the regular suffix to many of the irregulars (light green bar on top of dark green bar). The performance of age- and education-matched control subjects is shown in the grey bars.

as the default), rarely analogize irregular patterns to novel words (e.g. *spling-splung*), and are relatively unimpaired at generating novel regular forms like *plammed* [26,67,68]. Agrammatism, by contrast, is an impairment in producing fluent grammatical sequences, and is associated with damage to anterior perisylvian regions of the left hemisphere [69,70]. As predicted, agrammatic patients show the opposite pattern: more trouble inflecting regular than irregular verbs, a lack of errors like *swimmed*, and great difficulty suffixing novel words [26,67]. Similar effects have been documented in reading aloud, writing to dictation, repeating and judging words (even when controlling for frequency and length) [67], and in a regular/irregular contrast with Japanese-speaking patients [71].

The predicted double dissociation patterns are also seen in a comparison of neurodegenerative diseases. Alzheimer's disease (AD) is marked by greater

degeneration of medial and neocortical temporal lobe structures than of frontal cortex (particularly Broca's area) and the basal ganglia, and greater impairment of lexical and conceptual knowledge than of motor and cognitive skills, including aspects of grammatical processing [72]. Parkinson's disease (PD), associated with basal ganglia degeneration, is marked by greater impairment of motor and cognitive skills (including grammatical processing) than use of words and facts [72,73]. As predicted, AD patients have more trouble inflecting irregular than regular verbs, are relatively unimpaired at suffixing novel words, generate few irregular analogies for novel words, and produce over-regularization errors; PD patients show the contrasting patterns [26,32]. Moreover, the performance patterns correlate with the severity of the associated processing impairments in the two populations: anomia in AD, and right-side hypokinesia (an index of left-hemisphere basal ganglia degeneration) in PD [26,32].

Intriguingly, Huntington's Disease (HD), caused by degeneration of different basal ganglia structures, results in disinhibition of the projected frontal areas, leading to unsuppressible movements [73]. When HD patients inflect verbs, they show a third pattern: producing extra suffixes for regular and novel words like *walkeded*, *plaggeded* and *dugged*, but not analogous errors on irregulars like *dugugor* or *keptet* – suggesting that these errors are instances of unsuppressed regular suffixation [26,32].

Converging findings come from other methodologies. In normal subjects, both regular and irregular inflected forms can prime their stems. By hypothesis, a regular form is parsed into affix and stem (which primes itself); an irregular form is associated with its stem, somewhat like semantic priming. Patients with left inferior frontal damage do not show regular priming (*walked-walk*), although they retain irregular priming (*found-find*) and semantic priming (*swan-geese*). A patient with temporal-lobe damage showed the opposite pattern [68,74,75]. In studies that have recorded event-related potentials (ERPs) to printed words, when a regular suffix is placed on an irregular word (e.g. the German *Muskels*) or omitted where it is obligatory (e.g. 'Yesterday I walk'), the electrophysiological response is similar to the Left Anterior Negativity (LAN) commonly seen with syntactic violations. When irregular inflection is illicitly applied (e.g. the German *Karusellen*) or omitted (e.g. 'Yesterday I dig'), the response is a central negativity similar to the N400 elicited by lexical anomalies, including pronounceable non-words [40,76–79]. This suggests that the brain processes regular forms like syntactic combinations and irregular forms like words.

Double dissociations are difficult to explain in pattern associators, because except for artificially small networks, 'lesioning' the networks hurts irregular forms more than regular ones [80]. A recent interesting model by Joanisse and Seidenberg

conceded that distinct subsystems have to be lesioned to produce double dissociations [81]. Although they called these modules 'phonological' and 'semantic,' the semantic module was in fact a lexicon: it had one unit dedicated to each word, with no representation of meaning. The finding that lesioning a lexicon differentially impairs irregular inflection is exactly what WR predicts. Moreover, the model failed to duplicate the finding that agrammatic patients have more trouble with regular than irregular verbs [26,67]. Lesioning the phonology module caused a consistent selective deficit only with novel verbs; regulars were no harder than irregulars. The report also claims that because a novel form has no meaning, 'the only way to generate its past tense is by analogy to known phonological forms' [81]. This predicts that patient groups should have parallel tendencies to generalize regular and irregular inflection to novel words (*plammed* and *splung*, respectively), whereas in fact these tendencies dissociate [32,67]. Finally, the model predicts that selective difficulty with irregular forms should depend on semantic deficits. Miozzo reports an amonic patient who had difficulty accessing word forms but not word meanings; nonetheless, he had trouble with irregulars but not with regulars [82].

#### The future of the past-tense debate

The Rumelhart–McClelland model was deservedly influential, we believe, because it captured a real phenomenon. The persistence of families of irregular verbs with overlapping partial similarities, and people's use and occasional generalization of these family patterns according to similarity and frequency, can be simply explained by the assumption that human memory is partly superpositional and associative. Theories that try to explain every instance of redundancy among words using the same combinatorial mechanism used for productive syntax and regular morphology require needless complexity and esoteric representations, and fail to capture the many linguistic, psychological and neuropsychological phenomena in which irregular forms behave like words.

At the same time, the post-RMM connectionist models have revealed the problems in trying to explain *all* linguistic phenomena with a single pattern-associator architecture. Each model has been tailored to account for one phenomenon explained by the WR theory; unlike RMM, few models account for more than one phenomenon or predict new ones. And modelers repeatedly build in or presuppose surrogates for the linguistic phenomena they claim to eschew, such as lexical items, morphological structure and concatenation operations. We predict that the need for structured representations and combinatorial operations would assert itself even more strongly if modelers included phenomena that are currently ignored in current simulations, such as syntax and its interaction with inflection, the massively productive combinatorial inflection of polysynthetic languages, and the psychological events concealed by providing the models with correct past-tense forms during training (i.e. children's ability to recognize an input as a past-tense form, retrieve its stem from memory, compute their own form, and compare the two).

As an increasing number of linguistic and neuropsychological phenomena are addressed, especially the complex data from neuroimaging, inadequacies will no doubt be revealed in both kinds of models. Nothing in linguistics prevents theories from appealing to richer conceptions of memory than simple rote storage. Neither does neural network modeling prohibit structured or abstract representations, combinatorial operations, and subsystems for different kinds of computation. The adversarial nature of scientific debate might sometimes have prevented both sides from acknowledging that features of one model may correspond to constructs of the other, described at a different level of analysis. We suspect that allowing a full range of data to tell us which processes are most naturally explained by which kinds of mechanisms, rather than shoehorning all phenomena into a single mechanism favored by one or another camp, holds the best hope for an eventual resolution of the past-tense debate.

#### Acknowledgements

We dedicate this paper to David Rumelhart and Jay McClelland, in acknowledgement of the stimulating effect of their model on psycholinguistic and neurolinguistic research. S.P. was supported by NIH grant HD-18381. M.T.U. was supported by a McDonnell-Pew grant in Cognitive Neuroscience, NSF SBR-9905273, NIH MH58189, and Army DAMD-17-93-V-3018/3019/3020 and DAMD-17-99-2-9007.

#### References

- Rumelhart, D.E. and McClelland, J.L. (1986) On learning the past tenses of English verbs. In *Parallel Distributed Processing: Explorations in the Microstructures of Cognition* (Vol. 2) (McClelland, J.L. et al., eds), pp. 216–271, MIT Press
- Pinker, S. and Prince, A. (1988) On language and connectionism: analysis of a parallel distributed processing model of language acquisition. *Cognition* 28, 73–193
- Pinker, S. (1999) *Words and Rules: The Ingredients of Language*, HarperCollins
- Marcus, G.F. (2001) *The Algebraic Mind: Integrating Connectionism and Cognitive Science*, MIT Press
- Ullman, M.T. (2001) A neurocognitive perspective on language: the declarative/procedural model. *Nat. Rev. Neurosci.* 2, 717–726
- Lima, S.D. et al. (eds) (1994) *The Reality of Linguistic Rules*, John Benjamins
- Nooteboom, S. et al. (eds) (2002) *Storage and Computation in the Language Faculty*, Kluwer
- McClelland, J.L. and Patterson, K. (2002) Rules or connections in past-tense inflections: what does the evidence rule out? *Trends Cog. Sci.* 6, 465–472
- Berko, J. (1958) The child's learning of English morphology. *Word* 14, 150–177
- Chamberlain, A.F. (1906) Preterite forms, etc., in the language of English-speaking children. *Mod. Lang. Notes* 21, 42–44
- Marcus, G.F. et al. (1992) Overregularization in language acquisition. *Monogr. Soc. Res. Child Dev.* 57, 1–165
- Chomsky, N. (1959) A review of B.F. Skinner's *Verbal Behavior*. *Language* 35, 26–58
- Pinker, S. (1984) *Language Learnability and Language Development*, Harvard University Press
- Clahsen, H. (1999) Lexical entries and rules of language: a multidisciplinary study of German inflection. *Behav. Brain Sci.* 22, 991–1060
- Chomsky, N. and Halle, M. (1968/1991) *The Sound Pattern of English*, MIT Press
- Halle, M. and Mohanan, K.P. (1985) Segmental phonology of modern English. *Linguistic Inquiry* 16, 57–116
- Halle, M. and Marantz, A. (1993) Distributed morphology and the pieces of inflection. In *The View from Building 20* (Hale, K. and Keyser, S.J., eds), MIT Press
- Plunkett, K. and Marchman, V. (1993) From rote learning to system building: acquiring verb morphology in children and connectionist nets. *Cognition* 48, 21–69
- Elman, J. et al. (1996) *Rethinking Innateness: A Connectionist Perspective on Development*, MIT Press

- 20 Prasada, S. and Pinker, S. (1993) Generalization of regular and irregular morphological patterns. *Lang. Cogn. Proc.* 8, 1–56
- 21 Xu, F. and Pinker, S. (1995) Weird past tense forms. *J. Child Lang.* 22, 531–556
- 22 Jackendoff, R.S. (1975) Morphological and semantic regularities in the lexicon. *Language* 51, 639–671
- 23 Aronoff, M. (1976) *Word Formation in Generative Grammar*, MIT Press
- 24 Lieber, R. (1980) On the organization of the lexicon. In *Linguistics and Philosophy*, MIT
- 25 Bresnan, J. (1978) A realistic transformational grammar. In *Linguistic Theory and Psychological Reality* (Halle, J.B. and Miller, G., eds), MIT Press
- 26 Ullman, M.T. et al. (1997) A neural dissociation within language: evidence that the mental dictionary is part of declarative memory, and that grammatical rules are processed by the procedural system. *J. Cogn. Neurosci.* 9, 266–276
- 27 Mishkin, M. et al. (1984) Memories and habits: Two neural systems. In *Neurobiology of Learning and Memory* (Lynch, G. et al., eds), pp. 65–77, Guilford Press
- 28 Squire, L.R. and Knowlton, B.J. (2000) The medial temporal lobe, the hippocampus, and the memory systems of the brain. In *The New Cognitive Neurosciences* (Gazzaniga, M.S., ed.), pp. 765–780, MIT Press
- 29 Jackendoff, R. (2002) *Foundations of Language: Brain, Meaning, Grammar, Evolution*, Oxford University Press
- 30 Ullman, M.T. (1993) The computation of inflectional morphology. In *Department of Brain and Cognitive Sciences*, pp. 263, Massachusetts Institute of Technology
- 31 Ullman, M.T. (2001) The declarative/procedural model of lexicon and grammar. *J. Psycholinguist. Res.* 30, 37–69
- 32 Ullman, M.T. Evidence that lexical memory is part of the temporal lobe declarative memory, and that grammatical rules are processed by the frontal/basal-ganglia procedural system. *Brain Lang.* (in press)
- 33 Badecker, W. and Caramazza, A. (1991) Morphological composition in the lexical output system. *Cogn. Neuropsychol.* 8, 335–367
- 34 Burani, C. et al. (1984) Morphological structure and lexical access. *Vis. Lang.* 18, 348–358
- 35 Baayen, R.H. et al. (1997) Singulars and plurals in Dutch: evidence for a parallel dual-route model. *J. Mem. Lang.* 37, 94–117
- 36 Balota, D.A. and Ferraro, R. (1993) A dissociation of frequency and regularity effects in pronunciation performance across young adults, older adults, and individuals with senile dementia of the Alzheimer types. *J. Mem. Lang.* 32, 573–592
- 37 Balota, D.A. and Spieler, D.H. (1997) The utility of item-level analyses in model evaluation: a reply to Seidenberg and Plaut. *Psychol. Sci.* 9, 238–240
- 38 Besner, D. et al. (1990) On the connection between connectionism and data: are a few words necessary? *Psychol. Rev.* 97, 432–446
- 39 Coltheart, M. et al. (1993) Models of reading aloud: dual-route and parallel-distributed-processing approaches. *Psychol. Rev.* 100, 589–608
- 40 Ullman, M.T. et al. Sex differences in the neurocognition of language. *Brain Lang.* (in press)
- 41 Ullman, M.T. and Gopnik, M. (1999) Inflectional morphology in a family with inherited specific language impairment. *Appl. Psycholinguist.* 20, 51–117
- 42 van der Lely, H.K.J. and Ullman, M.T. (2001) Past tense morphology in specifically language impaired and normally developing children. *Lang. Cogn. Proc.* 16, 177–217
- 43 Ullman, M.T. (2001) The neural basis of lexicon and grammar in first and second language: the declarative/procedural model. *Bilingual. Lang. Cogn.* 4, 105–122
- 44 Alegre, M. and Gordon, P. (1999) Frequency effects and the representational status of regular inflections. *J. Mem. Lang.* 40, 41–61
- 45 Sproat, R. (1992) *Morphology and Computation*, MIT Press
- 46 Hare, M. et al. (1995) Default generalization in connectionist networks. *Lang. Cogn. Proc.* 10, 601–630
- 47 Hare, M. and Elman, J. (1992) A connectionist account of English inflectional morphology: evidence from language change. In *14th Annu. Conf. Cogn. Sci. Soc.*, pp. 265–270, Erlbaum
- 48 Nakisa, R.C. and Hahn, U. (1996) Where defaults don't help: the case of the German plural system. In *Proc. 18th Annu. Conf. Cogn. Sci. Soc.* (Cottrell, G.W., ed.), pp. 177–182, Erlbaum
- 49 Hahn, U. and Nakisa, R.C. (2000) German inflection: single route or dual route? *Cogn. Psychol.* 41, 313–360
- 50 Marcus, G.F. et al. (1995) German inflection: the exception that proves the rule. *Cogn. Psychol.* 29, 189–256
- 51 Marcus, G.F. (1995) The acquisition of inflection in children and multilayered connectionist networks. *Cognition* 56, 271–279
- 52 Marcus, G.F. (1995) Children's overregularization of English plurals: a quantitative analysis. *J. Child Lang.* 22, 447–459
- 53 Forrester, N. and Plunkett, K. (1994) Learning the Arabic plural: the case for minority default mappings in connectionist networks. In *16th Annu. Conf. Cogn. Sci. Soc.*, Erlbaum
- 54 Plunkett, K. and Nakisa, R. (1997) A connectionist model of the Arab plural system. *Lang. Cogn. Proc.* 12, 807–836
- 55 Berent, I. et al. The nature of regularity and irregularity: evidence from Hebrew nominal inflection. *J. Psycholinguist. Res.* (in press)
- 56 Berent, I. et al. (1999) Default nominal inflection in Hebrew: evidence for mental variables. *Cognition* 72, 1–44
- 57 Kiparsky, P. (1982) Lexical phonology and morphology. In *Linguistics in the Morning Calm* (Yang, I.S., ed.), pp. 3–91, Hansin, Seoul.
- 58 Williams, E. (1981) On the notions of 'lexically related' and 'head of a word'. *Linguist. Inq.* 12, 245–274
- 59 Selkirk, E.O. (1982) *The Syntax of Words*, MIT Press
- 60 Kim, J.J. et al. (1991) Why no mere mortal has ever flown out to center field. *Cogn. Sci.* 15, 173–218
- 61 Kim, J.J. et al. (1994) Sensitivity of children's inflection to morphological structure. *J. Child Lang.* 21, 173–209
- 62 MacWhinney, B. and Leinbach, J. (1991) Implementations are not conceptualizations: revising the verb learning model. *Cognition* 40, 121–157
- 63 Harris, C.L. (1992) Understanding English past-tense formation: the shared meaning hypothesis. In *Proc. 14th Annu. Conf. Cogn. Sci. Soc.*, Erlbaum
- 64 Daugherty, K.G. et al. (1993) Why no mere mortal has ever flown out to center field but people often say they do. In *15th Annu. Conf. Cogn. Sci. Soc.*, Erlbaum
- 65 Shirai, Y. (1997) Is regularization determined by semantics, or grammar, or both? Comments on Kim, Marcus, Pinker, Hollander & Coppola. *J. Child Lang.* 24, 495–501
- 66 Goodglass, H. (1993) *Understanding Aphasia*, Academic Press
- 67 Ullman, M.T. et al. Neural correlates of lexicon and grammar: evidence from the production, reading, and judgment of inflection in aphasia. *Brain Lang.* (in press)
- 68 Tyler, L.K. et al. (2002) Dissociations in processing past tense morphology: neuropathology and behavioral studies. *J. Cogn. Neurosci.* 14, 79–94
- 69 Alexander, M.P. (1997) Aphasia: clinical and anatomic aspects. In *Behavioral Neurology and Neuropsychology* (Feinberg, T.E. and Farah, M.J., eds), pp. 133–150, McGraw-Hill
- 70 Damasio, A.R. (1992) Aphasia. *N. Engl. J. Med.* 326, 531–539
- 71 Hagiwara, H. et al. (1999) Neurolinguistic evidence for rule-based nominal suffixation. *Language* 75, 739–763
- 72 Feinberg, T.E. and Farah, M.J. (eds) (1997) *Behavioral Neurology and Neuropsychology*, McGraw-Hill
- 73 Jankovic, J. and Tolosa, E.E. (1993) *Parkinson's Disease and Movement Disorders*, Williams & Wilkins
- 74 Marslen-Wilson, W.D. and Tyler, L.K. (1997) Dissociating types of mental computation. *Nature* 387, 592–594
- 75 Marslen-Wilson, W.D. and Tyler, L.K. (1998) Rules, representations, and the English past tense. *Trends Cogn. Sci.* 2, 428–435
- 76 Weyerts, H. et al. (1997) Brain potentials indicate differences between regular and irregular German plurals. *Neuroreport* 8, 957–962
- 77 Penke, M. et al. (1997) How the brain processes complex words: an event-related potential study of German verb inflections. *Cogn. Brain Res.* 6, 37–52
- 78 Gross, M. et al. (1998) Human brain potentials to violations in morphologically complex Italian words. *Neurosci. Lett.* 241, 83–86
- 79 Rodriguez-Fornells, A. et al. (2001) Event-related brain responses to morphological violations in Catalan. *Cogn. Brain Res.* 11, 47–58
- 80 Bullinaria, J.A. and Chater, N. (1995) Connectionist modeling: implications for cognitive neuropsychology. *Lang. Cogn. Proc.* 10, 227–264
- 81 Joanisse, M.F. and Seidenberg, M.S. (1999) Impairments in verb morphology after brain injury: a connectionist model. *Proc. Natl. Acad. Sci. U. S. A.* 96, 7592–7597
- 82 Miozzo, M. On the processing of regular and irregular forms of verbs and nouns: evidence from neuropsychology. *Cognition* (in press)